

# FORTIFY ARM SLEEVES - BLACK

SAU900025-BK

**saucony**



---

**Style #:** SAU900025-BK

---

**Available Date:** 3/1/2023

---

**Gender:** Unisex

---

**Variations: US:**XS-XL

---

**Features/Technologies**

---

## Description

Farewell, bare arms.

Our Fortify Arm Sleeves provide maximum coverage when you're out in the elements. Wear your Saucony pride on your sleeve and get protected while you're at it.

## Features And Benefits

- LW silicone gripper helps keep arm sleeves in place
- 50+ UPF in all colors
- Saucony graphic
- Bulk production will be sold on hanger cards (like handwear)
- 75% Recycled Nylon/25% Spandex (240g/m2).

# SOLSTICE NECK GAITER - TURQUOISE HEATHER

SAU800034-TQH

**saucony**



**Style #:** SAU800034-TQH

**Available Date:**

**Gender:** Unisex

**Variations:** US:O/S

**Features/Technologies**

## Description

Stretchy and comfortable for running or running errands, the Solstice Gaiter fits snugly over your chin and nose for ultimate protection and warmth.

## Features And Benefits

- Available in VIZI, a bold and bright alternative for low-light running
- Primary Material: 251 g/m2 79% Recycled Polyester / 21% Spandex

# HURRICANE NECK GAITER - BLACK

SAU800034-BK



**saucony**

---

**Style #:** SAU800034-BK

---

**Available Date:** 9/1/2024

---

**Gender:** Unisex

---

**Variations:** US:O/S

---

**Features/Technologies**

---

---

---

## Description

Stretchy and comfortable for running or running errands, the Hurricane Gaiter fits snugly over your chin and nose for ultimate protection and warmth.

## Features And Benefits

- Reflective logos
- BK carries over to AW25

## KEY DETAILS:

PRIMARY MATERIAL: 251 g/m2 79% Recycled Polyester / 21% Elastane

# REHEAT MITT - BLACK

SAU900034-BK

**saucony**



**Style #:** SAU900034-BK

**Available Date:**

**Gender:** Unisex

**Variations:** US:S/M, L/XL

**Features/Technologies**

## Description

Reheat and recharge with the Reheat Mitt. It protects your hands on the chilliest runs, so you can focus on your feet.

## Features And Benefits

- Recycled polyester is fleece on the inside
- Protection from the elements is a recycled polyester stretch fabric
- Gridded fleece fabric on thumb for gentle nosewipe
- Reflective logo
- Primary Material: 251 g/m2 79% Recycled Polyester / 21% Spandex



# SOLSTICE CONVERTIBLE MITT - SODALITE

SAU900033-SD

**saucony**



**Style #:** SAU900033-SD

**Available Date:**

**Gender:** Unisex

**Variations:** US:XS-XL

**Features/Technologies**

## Description

The Solstice Convertible Mitt offers all the warmth and comfort you need on those cold winter runs. Wind- and water-resistant, it's a mitten or a glove depending on your preference. Now there's nothing your hands can't handle.

## Features And Benefits

- Recycled polyester glove is fleece on the inside
- Conductive print on tips of forefingers and thumbs
- Convertible wind mitt cover tucks into a backhand pocket
- Mitt cover is windproof and water resistant
- Reflective logo
- Primary Material: 251 g/m2 79% Recycled Polyester / 21% Spandex



SAU900033-BK  
BLACK



SAU900033-BK BK  
BLACK/BLACK

# SOLSTICE GLOVE - VIZI RED

SAU900032-VR

**saucony**



**Style #:** SAU900032-VR

**Available Date:**

**Gender:** Unisex

**Variations:** US:XS-XL

**Features/Technologies**

**Description**

Meet the Solstice Glove. It keeps you warm on those chilly runs and its super handy conductive index fingers and thumbs let you keep up with texts and calls without missing a beat.

**Features And Benefits**

- Recycled polyester is fleece on the inside
- Conductive print on index finger and thumb
- Reflective logo
- Fleece Material 251 g/m2 79% Recycled Polyester / 21% Spandex



SAU900032-BK  
BLACK



SAU900032-LN  
LAGOON



SAU900032-SD  
SODALITE

# BLUSTER GLOVE - VIZI RED

SAU800036-VR

**saucony**



SAU800036-SDH  
SODALITE HEATH...

Style #:	SAU800036-VR
Available Date:	
Gender:	Unisex
Variations:	US:XS-XL
Features/Technologies	

**Description**  
Designed specifically for runners, this not-so-basic glove features water- and wind-resistance material covering the exposed surface from the wrist to the knuckles, as well as a ventilated inner lining for better breathability.

- Features And Benefits**
- Recycled polyester is fleece on the inside
  - Conductive print on index forefinger and thumb
  - Reflective Logo
  - Includes an overlay for wind- and water-resistance
  - Primary Material: 251 g/m2 79% Recycled Polyester / 21% Spandex

# BLUSTER GLOVE - BLACK

SAU800036-BK

**saucony**



---

**Style #:** SAU800036-BK

---

**Available Date:**

---

**Gender:** Unisex

---

**Variations:** US:XS-XL

---

**Features/Technologies**

---

## Description

Designed specifically for runners, this not-so-basic glove features water- and wind-resistance material covering the exposed surface from the wrist to the knuckles, as well as a ventilated inner lining for better breathability.

## Features And Benefits

- Recycled polyester is fleece on the inside
- Conductive print on index forefinger and thumb
- Reflective Logo
- Includes an overlay for wind- and water-resistance
- Primary Material: 251 g/m2 79% Recycled Polyester / 21% Spandex

# HAUL LITE PACK - DARK OLIVE

SAU800030-DO



**saucony**

Style #:	SAU800030-DO
Available Date:	3/1/2023
Gender:	Unisex
Variations:	US:XS, S/M, L/XL
Features/Technologies	

**Description**  
The long haul shouldn't require heavy lifting. That's why we made the Haul Lite Pack, a featherweight yet durable vest that features dual bottle carriers, front and back zipper pouches, and a breathable closure system.

- Features And Benefits**
- Recycled polyester blend is durable for years of use
  - Four zippered pockets to secure belongings
  - Top front stash pocket for small items
  - Two external water bottle pockets
  - Internal laptop sleeve, which accommodates most 15" laptops
  - Internal organization compartment
  - 30L capacity
  - \* Dark Olive carries over to SS23
  - Primary Materials: 448 g/m2 50% Recycled Polyester / 50% Polyester

# OUTPACE PETITE HAT - RAINFALL

SAU900037-RN

**saucony**



SAU900037-EM  
EMBER

**Style #:** SAU900037-RN

**Available Date:**

**Gender:** Unisex

**Variations:** US:O/S

**Features/Technologies**

## Description

Same great fabric and features as the Outpace Hat, now in a smaller size for optimal fit, protection, and comfort.

## Features And Benefits

- Perforated stretch panels for extra breathability
- Wicking internal headband pulls moisture away
- Adjustable hook-and-loop closure
- Primary Material: 157g/m2 43% Recycled Polyester / 43% Polyester / 14% Spandex

# OUTPACE PETITE HAT - BLACK

SAU900037-BK

**saucony**



**Style #:** SAU900037-BK

**Available Date:**

**Gender:** Unisex

**Variations:** US:O/S

**Features/Technologies**

## Description

Same great fabric and features as the Outpace Hat, now in a smaller size for optimal fit, protection, and comfort.

## Features And Benefits

- Perforated stretch panels for extra breathability
- Wicking internal headband pulls moisture away
- Adjustable hook-and-loop closure
- Primary Material: 157g/m2 43% Recycled Polyester / 43% Polyester / 14% Spandex

# RESTED BEANIE - BLACK HEATHER

SAU900036-BKH

**saucony**



**Style #:** SAU900036-BKH

**Available Date:**

**Gender:** Unisex

**Variations:** US:O/S

**Features/Technologies**

## Description

The Rested Beanie is designed for those with an equal love for running and self-expression. So you can stay warm and stay you.

## Features And Benefits

- Recycled polyester yarn is soft and itchless against the skin
- Fine gauge knit
- Heritage woven label
- Primary Material: 100% Recycled Polyester



# RESTED SHERPA HEADBAND - SODALITE HEATHER

SAU900031-SDH

**saucony**



SAU900031-BKH  
BLACK HEATHER

Style #:	SAU900031-SDH
Available Date:	
Gender:	Unisex
Variations:	US:O/S
Features/Technologies	

**Description**  
Protect your ears and stay extra warm on those chilly winter runs with the Rested Sherpa Headband. It's made with warm Sherpa fleece material, plus it has a perfect fit that covers your ears but stays out of your eyes.

- Features And Benefits**
- Recycled polyester Sherpa fleece
  - Heritage woven label
  - Primary Material: 247 g/m2 86% Recycled Polyester / 14% Polyester

# RESTED SHERPA BEANIE - LIGHT GREY HEATHER

SAU900030-LGH

**saucony**



**Style #:** SAU900030-LGH

**Available Date:**

**Gender:** Unisex

**Variations:** US:O/S

**Features/Technologies**

## Description

Featuring the same ultra-cozy and warm Sherpa as the Rested Sherpa 1/4 Zip, this beanie means business when it comes to protecting you from all of winter's elements. It's also made from recycled polyester because it's easier on the environment.

## Features And Benefits

- Recycled polyester sherpa fleece
- Crown has a bit more room for style
- Heritage woven label
- Primary Material: 251 g/m2 79% Recycled Polyester / 21% Spandex



SAU900030-BKH  
BLACK HEATHER

# BLUSTER WIND BEANIE - VIZI RED

SAU900029-VR

**saucony**



**Style #:** SAU900029-VR

**Available Date:**

**Gender:** Unisex

**Variations:** US:O/S

**Features/Technologies**

## Description

The Bluster Wind Beanie was made to protect against the gustiest winds, so you can focus on all the miles ahead. It features a wind- and water-resistant fabric up top combined with a double layer of warmth around the ears.

## Features And Benefits

- Crown of hat is recycled polyester Bluster softshell for wind- and water-resistance with C0 DWR
- Recycled polyester is double layered for lofty warmth around ear band
- Reflective logo
- One size fits most because materials have great stretch
- Wind Resistant Material: 199 g/m2 90% Recycled Polyester / 10% Spandex
- Fleece Material: 251 g/m2 79% Recycled Polyester / 21% Spandex



SAU900029-BK  
BLACK



SAU900029-LN  
LAGOON

# TECH EAR FLAP HAT - BLACK

SAU900028-BK

**saucony**



---

**Style #:** SAU900028-BK

---

**Available Date:**

---

**Gender:** Unisex

---

**Variations: US:** S/M, L/XL

---

**Features/Technologies**

---

## Description

Perfect for snow and rain, the Tech Ear Flap Hat's billed design offers all the protection you need from the elements. The flap folds up easily so you can change it up whenever.

## Features And Benefits

- Recycled polyester fleece on the inside with a wind and water resistant shell with C0 DWR on the exterior
- Cozy lined ear flap folds down for coverage or snaps up when not needed
- Heritage patch logo
- Overlay Material: 88 g/m2 100% Recycled Polyester
- Fleece Material: 251 g/m2 79% Recycled Polyester / 21% Spandex

# SOLSTICE BEANIE - VIZI RED

SAU900027-VR

**saucony**



**Style #:** SAU900027-VR

**Available Date:**

**Gender:** Unisex

**Variations:** US:O/S

**Features/Technologies**

## Description

Take on the winter elements in our warmest, coziest running hat, the Solstice Beanie. Made with a fleece material to keep you comfortable, it's also contoured to protect your ears against the cold.

## Features And Benefits

- Recycled polyester is double layered for lofty warmth
- Reflective logo
- One size fits most because material has great stretch
- Primary Material: 251 g/m2 79% Recycled Polyester / 21% Spandex



SAU900027-CY  
CRYSTAL



SAU900027-TQH  
TURQUOISE HEAT...

# SOLSTICE BEANIE - BLACK

SAU900027-BK



**saucony**

**Style #:** SAU900027-BK

**Available Date:** 9/1/2024

**Gender:** Unisex

**Variations:** US:O/S

**Features/Technologies**

## Description

Take on the winter elements in our warmest, coziest running hat, the Hurricane Beanie. Made with a fleece material to keep you comfortable, it's also contoured to protect your ears against the cold.

## Features And Benefits

- Recycled polyester is double layered for lofty warmth.
- Reflective logo.
- One size fits most because material has great stretch.
- NV and BK carry over to AW25

KEY DETAILS:

PRIMARY MATERIAL: 251 g/m2 79% Recycled Polyester / 21% Elastane

# SAUCONY FOAMIE TRUCKER HAT - STONE GRAPHIC

SAU900024-SNA2

**saucony**



**Style #:** SAU900024-SNA2

**Available Date:**

**Gender:** Unisex

**Variations:** US:O/S

**Features/Technologies**

## Description

Our Foamie Trucker hat comes with fun, bright graphics and a bold look that's sure to get some head nods.

## Features And Benefits

- Woven logomark label at back
- Adjustable snap back
- OSFM
- Primary Material: 157g/m2 43% Recycled Polyester / 43% Polyester / 14% Spandex

# SAUCONY TRUCKER HAT - POOL GRAPHIC

SAU900023-PLA2

**saucony**



---

**Style #:** SAU900023-PLA2

---

**Available Date:**

---

**Gender:** Unisex

---

**Variations:** US:O/S

---

**Features/Technologies**

---

## Description

The Saucony Trucker hat is made with organic cotton and looks just as awesome as it feels. Fun colors and unique Saucony graphics come together in one perfect Trucker.

## Features And Benefits

- Woven logomark label
- Adjustable snap back
- OSFM
- Primary Material: 328 g/m2 100% Organic Cotton
- Mesh Fabric: 131 g/m2 Polyester



# OUTPACE HAT - POOL

SAU900013-PL

**saucony**



---

**Style #:** SAU900013-PL

---

**Available Date:**

---

**Gender:** Unisex

---

**Variations:** US:O/S

---

**Features/Technologies**

---

## Description

Breathable sun and sweat protection. For those who need to shield their face from sun, sweat, and rain, the lightweight and breathable Outpace Hat provides streamlined performance.

## Features And Benefits

- Wicking headband pulls moisture away
- Adjustable hook-and-loop closure makes the perfect fit easy
- Paneled to provide a streamlined silhouette
- Woven logomark label
- Primary Material: 157g/m2 86% Polyester (43% Recycled) / 14% Spandex

# OUTPACE HAT - BLACK

SAU900013-BKGR

**saucony**



---

**Style #:** SAU900013-BKGR

---

**Available Date:**

---

**Gender:** Unisex

---

**Variations:** US:O/S

---

**Features/Technologies**

---

## Description

Breathable sun and sweat protection. For those who need to shield their face from sun, sweat, and rain, the lightweight and breathable Outpace Hat provides streamlined performance.

## Features And Benefits

- Wicking headband pulls moisture away
- Adjustable hook-and-loop closure makes the perfect fit easy
- Paneled to provide a streamlined silhouette
- Woven logomark label
- Primary Material: 157g/m2 86% Polyester (43% Recycled) / 14% Spandex

# SOLSTICE BALACLAVA - SODALITE HEATHER

SAU900009-SDH

**saucony**



**Style #:** SAU900009-SDH

**Available Date:**

**Gender:** Unisex

**Variations:** US:O/S

**Features/Technologies**

## Description

For those committed to running in the coldest of winter-like conditions, the Solstice Balaclava minimizes the amount of exposed skin with a stretchy cozy layer that lets you see and breathe comfortably.

## Features And Benefits

- Stretchy knit paneling ensures freedom of movement
- Mesh panel over nostrils and mouth make it easy to breathe while still warming the air lungs receive
- Eye opening is shaped to preserve peripheral vision
- Reflective logo marks
- Primary Material: 251g/m2 79% recycled polyester / 21% spandex

# SOLSTICE BALACLAVA - BLACK

SAU900009-BK

**saucony**



**Style #:** SAU900009-BK

**Available Date:**

**Gender:** Unisex

**Variations:** US:O/S

**Features/Technologies**

## Description

For those committed to running in the coldest of winter-like conditions, the Solstice Balaclava minimizes the amount of exposed skin with a stretchy cozy layer that lets you see and breathe comfortably.

## Features And Benefits

- Stretchy knit paneling ensures freedom of movement
- Mesh panel over nostrils and mouth make it easy to breathe while still warming the air lungs receive
- Eye opening is shaped to preserve peripheral vision
- Reflective logo marks
- Primary Material: 251g/m2 79% recycled polyester / 21% spandex

# SOLSTICE HEADBAND - VIZI RED

SAU900007-VR

**saucony**

Style #: SAU900007-VR

Available Date:

Gender: Unisex

Variations: US:O/S

Features/Technologies



## Description

For those committed to running in the coldest of winter-like conditions, the Solstice Headband provides our warmest protection against the elements.

## Features And Benefits

- Fleece interior provides superior warmth and pulls sweat away
- Contoured to provide full ear coverage
- Reflective logo marks
- Primary Material: 251g/m2 79% Recycled Polyester / 21% Spandex



SAU900007-BK  
BLACK



SAU900007-EMH  
EMBER HEATHER



SAU900007-SDH  
SODALITE HEATH...

# RESTED POM BEANIE - SUNDOWN

SAU800031-SU



**saucony**

**Style #:** SAU800031-SU

**Available Date:**

**Gender:** Unisex

**Variations:** US:O/S

**Features/Technologies**

**Description**

Go from cross-country season to cross-country ski season in the Rested Pom Beanie, a cozy staple made with chunky recycled polyester yarns and a fun pom pom.

**Features And Benefits**

- Recycled polyester rib knit
- Heritage woven, foldover label
- Fluffy pom-pom primed for style seekers
- One size fits most because materials have great stretch
- Primary Material: 55% Recycled Polyester / 20% Acrylic / 20% Nylon / 5% Wool



SAU800031-PM  
PALM

# DASH BRA TOP - COOL MINT

SAW800378-CM

**saucony**



**Style #:** SAW800378-CM

**Available Date:**

**Gender:** Women's

**Variations: US:**XXS-XL

**Features/Technologies**

## Description

Style or Performance? Never choose again.

Who says you can't accomplish great things on the run while looking great, too? The Dash Collection is all performance and all style, so you never have to sacrifice one for the other.

## Features And Benefits

- Recycled nylon has plenty of stretch
- Main body fabric: 240g/m2 75% Recycled Nylon / 25% Spandex

# SKYROCKET BRA - BLACK

SAW800361-BK

**saucony**



---

**Style #:** SAW800361-BK

---

**Available Date:** 3/1/2023

---

**Gender:** Women's

---

**Variations: US:**XXS-XL

---

**Features/Technologies**

---

## Description

We kept the classic, supportive design runners know and love from the original Skyrocket Bra, but added a new mesh back panel for extra ventilation and a plush lining for added comfort.

## Features And Benefits

- Recycled nylon fabric has plenty of stretch and support
- Mesh back panel for increased breathability and to support super fast dry times
- Encased elastic is plush on the inside
- \*Black carries over to SS23
- Primary Material: 240 g/m2 75% Recycled Nylon / 25% Spandex



# UNWIND SHORT - SOOT

SAW800440-ST



SAW800440-BA  
BASALT

**saucony**

Style #:	SAW800440-ST
Available Date:	
Gender:	Women's
Variations:	
Features/Technologies	

## Description

## Features And Benefits

# PINNACLE 8" TIGHT SHORT - APPLE BUTTER

SAW800436-AB

**saucony**



Style #:	SAW800436-AB
Available Date:	
Gender:	Women's
Variations:	
Features/Technologies	

## Description

## Features And Benefits

# PINNACLE 2.5" SHORT - BLACK

SAW800433-BK



SAW800433-AB  
APPLE BUTTER

**saucony**

Style #:	SAW800433-BK
Available Date:	
Gender:	Women's
Variations:	
Features/Technologies	

## Description

## Features And Benefits

# EXPLORER UTILITY CROP TIGHT - CLIMBING IVY

SAW800431-CI

**saucony**



Style #: SAW800431-CI  
Available Date: 9/1/2022  
Gender: Women's  
Variations:  
Features/Technologies

## Description



SAW800431-BK  
BLACK  
8/31/2022

## Features And Benefits

# EXPLORER UTILITY 6" SHORT - ZENITH

SAW800430-ZE

**saucony**



SAW800430-CI  
CLIMBING IVY

Style #:	SAW800430-ZE
Available Date:	
Gender:	Women's
Variations:	
Features/Technologies	

Description

Features And Benefits

# ELEVATE 4" 2-IN-1 SHORT - WHITE

SAW800427-WH



SAW800427-PE  
PEWTER

**saucony**

Style #:	SAW800427-WH
Available Date:	
Gender:	Women's
Variations:	
Features/Technologies	

## Description

## Features And Benefits

# OUTPACE 5" SHORT - BLACK

SAW800423-BK



**saucony**

Style #:	SAW800423-BK
Available Date:	9/1/2024
Gender:	Women's
Variations:	US:XXS-2XL
Features/Technologies	

**Description**  
OUTPACE COLLECTION  
Lightweight and cling-free comfort that can go the distance.

- Why you'll love it:
- Comfort knit waistband
  - Silky-smooth, superior 4-way stretch material
  - Perforated panels
  - Convenient storage options

- Features And Benefits**
- Soft, internal elastic waistband with external drawcord
  - Perforated hem piecing
  - Zippered right back pocket
  - Two drop-in pockets at inside brief
  - Recycled polyester soft and smooth knit brief liner
  - Reflective logos
  - BK carries over to AW25

KEY DETAILS

Best For	Running
----------	---------

# OUTPACE 5" SHORT - AZURE

SAW800423-AZ



**saucony**

Style #:	SAW800423-AZ
Available Date:	
Gender:	Women's
Variations:	
Features/Technologies	

## Description

## Features And Benefits



SAW800326-BK  
BLACK



SAW800423-AB  
APPLE BUTTER



# OUTPACE 3" SHORT - ZENITH

SAW800422-ZE



**saucony**

Style #: SAW800422-ZE

Available Date:

Gender: Women's

Variations:

Features/Technologies

## Description

## Features And Benefits



SAW800422-AT  
ATMOS



SAW800422-AZ  
AZURE

# OUTPACE 3" SHORT - BLACK

SAW800422-BK



**saucony**

Style #:	SAW800422-BK
Available Date:	9/1/2024
Gender:	Women's
Variations:	US:XXS-2XL
Features/Technologies	

## Description

OUTPACE COLLECTION  
Lightweight and cling-free comfort that can go the distance.

Why you'll love it:

- Comfort knit waistband
- Silky-smooth, superior 4-way stretch material
- Perforated panels
- Convenient storage options

## Features And Benefits

- Encased elastic waistband with internal infinity drawcord
- Perforated panel for breathability at outside thigh and hem
- Zippered right back pocket
- Two drop-in pockets at inside brief
- Recycled polyester soft and smooth knit brief liner
- Reflective logos
- BK carries over to AW25

## KEY DETAILS

# OUTPACE 2.5" SPLIT SHORT - ETHER

SAW800421-ET



SAW800421-ATWP  
ATMOS WAVE PRI...

**saucony**

Style #:	SAW800421-ET
Available Date:	
Gender:	Women's
Variations:	
Features/Technologies	

## Description

## Features And Benefits

# RESTED SWEATPANT - SEPIA ROSE HEATHER GRAPHIC

SAW800406-SRHS3

**saucony**



Style #:	SAW800406-SRHS3
Available Date:	
Gender:	Women's
Variations:	
Features/Technologies	

## Description

## Features And Benefits

# RESTED SWEATPANT - LIGHT GREY HEATHER GRAPHIC

SAW800406-LGHA2

**saucony**



SAW800406-BKHA2  
BLACK HEATHER ...

**Style #:** SAW800406-LGHA2

**Available Date:**

**Gender:** Women's

**Variations: US:**XXS-XL

**Features/Technologies**

## Description

For those who love running, Saucony Rested Collection complements their personal style with a range of fresh graphics on quality streetwear.

## Features And Benefits

- Fleece is brushed on the inside, giving you that super soft and cozy feeling.
- Made with organic cotton which feels better and is better for the planet.
- Organic cotton rib encases elastic at the waist. Features a convenient exterior drawcord, too.
- Dual organic cotton jersey hand pockets for easy access.
- Features a rib cuff at the hem.
- \*Black Heather Graphic carries over to SS23

# BOULDER WIND TIGHT - SODALITE HEATHER

SAW800404-SDH

**saucony**



SAW800404-BK  
BLACK

**Style #:** SAW800404-SDH

**Available Date:**

**Gender:** Women's

**Variations:** US:XXS-XL

**Features/Technologies**

## Description

The Boulder Collection features high performance apparel that keeps you at the top of your game, all year round. No matter the weather, you'll stay comfortable, protected, and ready for your best workout ever.

## Features And Benefits

- Recycled polyester is brushed inside for warmth, keeping you cozy.
- Pieced across front thigh, glutes, and calf with Bluster softshell fabric for additional wind resistance for key muscle groups
- Extra comfy waistband with interior drawcord
- Low hip pocket at wearer's right side
- Reflective logos and taping at hem keep you in sight.
- Primary Material: 251 g/m2 79% Recycled Polyester / 21% Spandex
- Wind Resistant Panel: 199 g/m2 90% Recycled Polyester / 10% Spandex

# FORTIFY CROP - BLACK

SAW800398-BK

**saucony**



**Style #:** SAW800398-BK

**Available Date:**

**Gender:** Women's

**Variations: US:**XXS-XL

**Features/Technologies**

## Description

The Fortify Collection is our best-selling collection of running tights that delivers the perfect fit and performance you crave.

## Features And Benefits

- Recycled nylon is better for the planet
- Waistband is super comfy and lays flat for easy layering
- One low hip, one outer thigh pocket for convenience.
- 22.5" inseam.
- Reflective logos keep you in sight.
- \* Black carries over to SS23
- Primary Material: 240 g/m2 75% Recycled Nylon / 25% Spandex

# FORTIFY CROP TIGHT - APPLE BUTTER

SAW800398-AB

**saucony**



Style #:	SAW800398-AB
Available Date:	
Gender:	Women's
Variations:	
Features/Technologies	

## Description

## Features And Benefits



# BOSTON PANT - SODALITE

SAW800397-SD

**saucony**



**Style #:** SAW800397-SD

**Available Date:**

**Gender:** Women's

**Variations:** US:XXS-2XL

**Features/Technologies**

## Description

The Boston Collection was born from our classic running pant, delivering all the performance without any of the fluff.

## Features And Benefits

- Recycled polyester feels better and is better for the planet
- Elasticated waistband feature interior drawcord
- Features convenient welted hand pockets plus back right zip pocket covered by welt.
- Primary Material: 157 g/m2 43% Recycled Polyester / 43% Polyester / 14% Spandex



SAW800396-BKH  
BLACK HEATHER  
8/31/2022



SAW800396-SNH  
STONE HEATHER

# BOSTON WOVEN PANT - BLACK

SAW800397-BK

**saucony**



**Style #:** SAW800397-BK

**Available Date:**

**Gender:** Women's

**Variations: US:**XXS-2XL

**Features/Technologies**

**Description**

The Boston Collection was born from our classic running pant, delivering all the performance without any of the fluff.

**Features And Benefits**

- Recycled polyester feels better and is better for the planet
- Elasticated waistband feature interior drawcord
- Features convenient welted hand pockets plus back right zip pocket covered by welt.
- Primary Material: 157 g/m2 43% Recycled Polyester / 43% Polyester / 14% Spandex

# BOSTON PANT - SOOT HEATHER

SAW800396-STH



**saucony**

Style #:	SAW800396-STH
Available Date:	
Gender:	Women's
Variations:	
Features/Technologies	

## Description

## Features And Benefits

# SOLSTICE JOGGER - BLACK HEATHER

SAW800393-BKH

**saucony**



**Style #:** SAW800393-BKH

**Available Date:**

**Gender:** Women's

**Variations:** US:XXS-2XL

**Features/Technologies**

## Description

The Solstice Collection was made to take you places and keep you warm along the way. These casual performance styles were designed using our coziest fabrics ever, leaving you toasty and comfortable for all the miles ahead.

## Features And Benefits

- Recycled polyester is brushed inside for extra warmth, keeping you cozy.
- Interior drawcord
- Convenient front hand pockets; zippered back right pocket is covered by self welt.
- Reflective logos keep you in sight.
- Primary Material: 251 g/m2 79% Recycled Polyester / 21% Spandex

# SOLSTICE TIGHT - SODALITE HEATHER

SAW800392-SDH

**saucony**



**Style #:** SAW800392-SDH

**Available Date:**

**Gender:** Women's

**Variations:** US:XXS-2XL

**Features/Technologies**

## Description

The Solstice Collection was made to take you places and keep you warm along the way. These casual performance styles were designed using our coziest fabrics ever, leaving you toasty and comfortable for all the miles ahead.

## Features And Benefits

- Made with recycled polyester, it's soft brushed and super comfy.
- Perfectly cozy on its own, but perfect for layering on chilly days, too.
- Wide waistband offers extra comfort
- Convenient dual outside hip pockets
- Reflective logos and taping at the hem keep you in sight.
- BK colorway features an exaggerated reflective logo at thigh.
- Primary Material: 251 g/m2 79% Recycled Polyester / 21% Spandex



SAW800392-BK  
BLACK



SAW800392-BKH  
BLACK HEATHER



SAW800392-CY  
CRYSTAL

# TIME TRIAL CROP TIGHT - DARK GREY HEATHER

SAW800383-DGH

**saucony**



**Style #:** SAW800383-DGH

**Available Date:**

**Gender:** Women's

**Variations:** US:XXS-XL

**Features/Technologies**

## Description

Above and beyond.

Every piece in the Time Trial Collection is made to test limits. Designed with our highest performing fabrics and features, it's truly the future of running. Get ready to make it your present.

## Features And Benefits

- Panelled compression across quad, glutes, and calf
- 3/4 length (22.5" inseam)
- Back pocket integrated into waistband
- Reflective logo marks and tape at hem
- Main body fabric: 75% Recycled Nylon / 25% Spandex (240g/m2).
- Secondary fabric: 71% Recycled Nylon / 29% Spandex (220g/m2).

# FORTIFY 8" SHORT - BLACK

SAW800374-BK

**saucony**



---

**Style #:** SAW800374-BK

---

**Available Date:** 3/1/2023

---

**Gender:** Women's

---

**Variations: US:**XXS-XL

---

**Features/Technologies**

---

## Description

The Fortify Collection is our best-selling collection of running tights that delivers the perfect fit and performance you crave.

## Features And Benefits

- Comfort waistband with internal mesh support stays put
- One outside thigh pocket
- 8" inseam
- High rise
- \*Black carries over to SS23
- Primary Material: 240g/m2 75% Recycled Nylon / 25% Spandex

# FORTIFY 3" HOT SHORT - ZENITH

SAW800373-ZE



SAW800373-BK  
BLACK  
2/28/2023

**saucony**

Style #:	SAW800373-ZE
Available Date:	
Gender:	Women's
Variations:	
Features/Technologies	

## Description

## Features And Benefits



# OUTPACE 5" SHORT - STONE

SAW800326-SN

**saucony**



SAW800326-PL  
POOL

Style #:	SAW800326-SN
Available Date:	
Gender:	Women's
Variations:	US:XXS-2XL
Features/Technologies	

**Description**  
For those looking for a simple run short done impeccably well, the feature-rich Outpace shorts supply unending comfort.

- Features And Benefits**
- Perforated panel near hem adds interest
  - Elastic waistband with internal comfort band and exterior drawcord
  - Small zippered back pocket
  - Comfort brief liner
  - 5" inseam, mid-rise
  - Primary Material: 157g/m2 86% Polyester (43% Recycled) / 14% Spandex
  - Brief Liner Material: 110g/m2 92% Recycled Polyester / 8% Polyester

# OUTPACE 3" SHORT - SODALITE

SAW800324-SD

**saucony**



SAW800324-EM  
EMBER



SAW800324-RN  
RAINFALL

Style #:	SAW800324-SD
Available Date:	
Gender:	Women's
Variations:	US:XXS-2XL
Features/Technologies	

**Description**  
For those looking for a simple run short done impeccably well, the feature-rich Outpace shorts supply unending comfort.

- Features And Benefits**
- Elastic waistband with Infinity drawcord
  - Small zippered back pocket
  - Comfort brief liner
  - 3" inseam, mid-rise
  - Primary Material: 157g/m2 86% Polyester (43% Recycled) / 14% Spandex
  - Brief Liner Material: 110g/m2 92% Recycled Polyester / 8% Polyester

# BOSTON WOVEN PANT - PEWTER

SAM800348-PE



**saucony**

Style #:	SAM800348-PE
Available Date:	
Gender:	Men's
Variations:	
Features/Technologies	

**Description**

**Features And Benefits**

# RESTED SWEAT SHORT - HORIZON HEATHER GRAPHIC

SAM800347-HZHS3

**saucony**



Style #:	SAM800347-HZHS3
Available Date:	
Gender:	Men's
Variations:	
Features/Technologies	

## Description

## Features And Benefits

# PINNACLE 5" 2-IN-1 SHORT - BLACK

SAM800339-BK



**saucony**

Style #:	SAM800339-BK
Available Date:	
Gender:	Men's
Variations:	
Features/Technologies	

**Description**

**Features And Benefits**

# EXPLORER UTILITY 6" SHORT - PEWTER

SAM800336-PE

**saucony**



**Style #:** SAM800336-PE

**Available Date:**

**Gender:** Men's

**Variations:**

**Features/Technologies**

**Description**

**Features And Benefits**



SAM800336-BK  
BLACK



SAM800336-CI  
CLIMBING IVY

# OUTPACE 7" 2-IN-1 SHORT - BLACK

SAM800335-BK



**saucony**

**Style #:** SAM800335-BK

**Available Date:** 9/1/2024

**Gender:** Men's

**Variations:** US:S-3XL

**Features/Technologies**

## Description

OUTPACE COLLECTION

Lightweight and cling-free comfort that can go the distance.

Why you'll love it:

- Comfort knit waistband
- Silky-smooth, superior 4-way stretch material
- Perforated panels
- Convenient storage options

## Features And Benefits

- Recycled polyester lightweight stretch woven floats instead of clings
- Perforated panels at side seam and back yoke for breathability
- Elastic waistband is encased in soft knit; exterior drawcard
- Inner liner material is soft and supportive
- Hem vent finished with bartack
- Drop-in hand pockets, zippered back pocket on wearer's right
- Reflective logos
- 7" inseam outer short; 8.25" inseam inner short

# OUTPACE 7" SHORT - HORIZON

SAM800329-HZ



SAM800329-CI  
CLIMBING IVY

**saucony**

Style #:	SAM800329-HZ
Available Date:	
Gender:	Men's
Variations:	
Features/Technologies	

Description

Features And Benefits



# OUTPACE 7" SHORT - BLACK

SAM800329-BK



**saucony**

Style #:	SAM800329-BK
Available Date:	9/1/2024
Gender:	Men's
Variations:	US:S-3XL
Features/Technologies	

### Description

OUTPACE COLLECTION  
Lightweight and cling-free comfort that can go the distance.

Why you'll love it:

- Comfort knit waistband
- Silky-smooth, superior 4-way stretch material
- Perforated panels
- Convenient storage options

### Features And Benefits

- Recycled polyester lightweight stretch woven floats instead of clings
- Perforated panels at side seam and back yoke for breathability
- Interior elastic waistband is soft against the skin
- Brief material is soft and supportive
- Interior drawcord
- Hem vent finished with bartack
- On-seam hand pockets; Zippered back pocket on wearer's right
- Reflective logos

# OUTPACE 5" SHORT - PEWTER CAMO PRINT

SAM800328-PECP

**saucony**



Style #:	SAM800328-PECP
Available Date:	
Gender:	Men's
Variations:	
Features/Technologies	

## Description



SAM800328-DA  
DAHLIA



SAM800328-HZ  
HORIZON

## Features And Benefits

# OUTPACE 5" SHORT - BLACK

SAM800328-BK



**saucony**

**Style #:** SAM800328-BK

**Available Date:** 9/1/2024

**Gender:** Men's

**Variations:** US:S-3XL

**Features/Technologies**

## Description

OUTPACE COLLECTION

Lightweight and cling-free comfort that can go the distance.

Why you'll love it:

- Comfort knit waistband
- Silky-smooth, superior 4-way stretch material
- Perforated panels
- Convenient storage options

## Features And Benefits

- Recycled polyester lightweight stretch woven floats instead of clings
- Perforated panels at side seam and back yoke for breathability
- Interior elastic waistband is soft against the skin
- Brief material is soft and supportive
- Interior drawcord
- Hem vent finished with bartack
- On-seam hand pockets; Zippered back pocket on wearer's right
- Reflective logos
- BK carries over to AW25

# OUTPACE 3" SHORT - HORIZON

SAM800327-HZ



**saucony**

Style #:	SAM800327-HZ
Available Date:	
Gender:	Men's
Variations:	
Features/Technologies	

**Description**

**Features And Benefits**

# RESTED SWEATPANT - LAGOON GRAPHIC

SAM800312-LNA2

**saucony**



SAM800312-BKHA2  
BLACK HEATHER ...

Style #:	SAM800312-LNA2
Available Date:	
Gender:	Men's
Variations:	US:S-XXL
Features/Technologies	

**Description**  
For those who love running, Saucony Rested Collection complements their personal style with a range of fresh graphics on quality streetwear.

- Features And Benefits**
- Fleece is brushed on the inside, giving you that super soft and cozy feeling.
  - Made with organic cotton which feels better and is better for the planet.
  - Organic cotton rib encases elastic at the waist. Features a convenient exterior drawcord, too.
  - Dual organic cotton jersey hand pockets for easy access.
  - Features a rib cuff at the hem.
  - \* Black Heather Graphic carries over to SS23

# BOSTON WOVEN PANT - SODALITE

SAM800304-SD

**saucony**



**Style #:** SAM800304-SD

**Available Date:**

**Gender:** Men's

**Variations: US:**S-3XL

**Features/Technologies**

**Description**

The Boston Collection was born from our classic running pant, delivering all the performance without any of the fluff.

**Features And Benefits**

- Recycled polyester feels better and is better for the planet
- Elasticated waistband feature interior drawcord
- Features convenient welted hand pockets plus back right zip pocket covered by welt.
- Primary Material: 157 g/m2 43% Recycled Polyester / 43% Polyester / 14% Spandex

# BOSTON PANT - SODALITE HEATHER

SAM800303-SDH

**saucony**



SAM800303-BKH  
BLACK HEATHER  
8/31/2022

**Style #:** SAM800303-SDH

**Available Date:**

**Gender:** Men's

**Variations:** US:S-3XL

**Features/Technologies**

## Description

The Boston Collection was born from our classic running pant, delivering all the performance without any of the fluff.

## Features And Benefits

- Recycled polyester and lyoell blend feels better and is better for the planet.
- Wide waistband is comfy and easy to wear under layers
- Drop in hand pockets come in handy
- Reflective logos keep you in sight
- \*Black Heather carries over into SS23
- Primary Material: 260 g/m2 80% Recycled Polyester / 15% Lyocell / 5% Spandex

# SOLSTICE JOGGER - BLACK HEATHER

SAM800300-BKH

**saucony**



**Style #:** SAM800300-BKH

**Available Date:**

**Gender:** Men's

**Variations:** US:S-3XL

**Features/Technologies**

## Description

The Solstice Collection was made to take you places and keep you warm along the way. These casual performance styles were designed using our coziest fabrics ever, leaving you toasty and comfortable for all the miles ahead.

## Features And Benefits

- Recycled polyester is brushed inside for extra warmth, keeping you cozy
- Interior drawcord
- Convenient front hand pockets; zippered back right pocket is covered by self welt
- Reflective logos keep you in sight.
- Primary Material: 251 g/m2 79% Recycled Polyester / 21% Spandex



# SOLSTICE TIGHT - LAGOON

SAM800299-LN

**saucony**



**Style #:** SAM800299-LN

**Available Date:**

**Gender:** Men's

**Variations:** US:S-3XL

**Features/Technologies**

**Description**

The Solstice Collection was made to take you places and keep you warm along the way. These casual performance styles were designed using our coziest fabrics ever, leaving you toasty and comfortable for all the miles ahead.

**Features And Benefits**

- Made with recycled polyester, it's soft brushed and super comfy
- Perfectly cozy on its own, but perfect for layering on chilly days, too
- Encased elastic waistband features an interior drawcord
- Convenient zippered back pocket
- Reflective logos and taping at the hem keep you in sight.
- Primary Material: 251 g/m2 79% Recycled Polyester / 21% Spandex



SAM800299-BK  
BLACK



SAM800299-BKH  
BLACK HEATHER

# OUTPACE 2.5" SPLIT SHORT - VIZI RED

SAM800276-VR

**saucony**



Style #:	SAM800276-VR
Available Date:	
Gender:	Men's
Variations:	US:S-3XL
Features/Technologies	

**Description**  
For those looking for a simple run short done impeccably well, the feature-rich Outpace shorts supply unending comfort.

- Features And Benefits**
- Perforated side panel for ventilation
  - Elastic waistband with internal comfort band and internal drawcord
  - Small zippered back pocket
  - Mesh brief liner
  - 2.5" inseam
  - Primary Material: 157g/m2 86% Polyester (43% Recycled) / 14% Spandex
  - Brief Liner Material: 110g/m2 92% Recycled Polyester / 8% Polyester

# BELL LAP TIGHT - DARK GREY HEATHER

SAM800273-DGH

**saucony**



SAM800273-BK  
BLACK  
2/28/2023

**Style #:** SAM800273-DGH

**Available Date:**

**Gender:** Men's

**Variations:** US:S-XXL

**Features/Technologies**

## Description

The hold you need to run strong.  
For the runners who won't let anything slow their roll, the recycled nylon Bell Lap Tight and Bell Lap Tight Short features plenty of stretch and streamlined support to carry them comfortably to the finish line.

## Features And Benefits

- Recycled nylon fabric offers stretch and support
- Internal drawcord
- Drop-in pocket stores phone securely against the body
- Right leg pocket secures necessities with a zipper
- Reflective logo and details for added visibility
- 240 g/m2 75% Recycled Nylon / 25% Spandex
- \*Black carries over to AW22

# BELL LAP SHORT - BLACK

SAM800272-BK



**saucony**

**Style #:** SAM800272-BK

**Available Date:** 3/1/2023

**Gender:** Men's

**Variations:** US:S-XXL

**Features/Technologies**

KEY\_LOOK

## Description

For the runners who won't let anything slow their roll, the recycled nylon Bell Lap Tight and Bell Lap Tight Short features plenty of stretch and streamlined support to carry them comfortably to the finish line.

## Features And Benefits

- Recycled nylon fabric offers stretch and support
- Perfect base layer for extra-cold days
- Internal drawcord
- Drop-in pocket stores phone securely against the body
- 9" inseam
- Reflective logo and details for added visibility
- \*Black carries over to SS23
- Primary Material: 240g/m2 75% Recycled Nylon / 25% Spandex

# OUTPACE 7" SHORT - SODALITE

SAM800244-SD

**saucony**



SAM800244-LN  
LAGOON

Style #:	SAM800244-SD
Available Date:	
Gender:	Men's
Variations:	US:S-3XL
Features/Technologies	

**Description**  
For those looking for a simple run short done impeccably well, the feature-rich Outpace shorts supply unending comfort.

- Features And Benefits**
- Perforated side panel for ventilation
  - Elastic waistband with internal comfort band and internal drawcord
  - Small zippered back pocket
  - Mesh brief liner
  - 7" inseam
  - Primary Material: 157g/m2 86% Polyester (43% Recycled) / 14% Spandex
  - Brief Liner Material: 110g/m2 92% Recycled Polyester / 8% Polyester

# OUTPACE 5" SHORT - STONE

SAM800243-SN

**saucony**



SAM800243-SD  
SODALITE

Style #:	SAM800243-SN
Available Date:	
Gender:	Men's
Variations:	US:S-3XL
Features/Technologies	

**Description**  
For those looking for a simple run short done impeccably well, the feature-rich Outpace shorts supply unending comfort.

- Features And Benefits**
- Perforated side panel for ventilation
  - Elastic waistband with internal comfort band and internal drawcord
  - Small zippered back pocket
  - Mesh brief liner
  - 5" inseam
  - Primary Material: 157g/m2 86% Polyester (43% Recycled) / 14% Spandex
  - Brief Liner Material: 110g/m2 92% Recycled Polyester / 8% Polyester

# OUTPACE 3" SHORT - TURQUOISE

SAM800242-TQ

**saucony**



SAM800242-EM  
EMBER

Style #:	SAM800242-TQ
Available Date:	
Gender:	Men's
Variations:	US:S-3XL
Features/Technologies	

**Description**  
For those looking for a simple run short done impeccably well, the feature-rich Outpace shorts supply unending comfort.

- Features And Benefits**
- Perforated side panel for ventilation
  - Elastic waistband with internal comfort band and internal drawcord
  - Small zippered back pocket
  - Mesh brief liner
  - 3" inseam
  - Primary Material: 157g/m2 86% Polyester (43% Recycled) / 14% Spandex
  - Brief Liner Material: 110g/m2 92% Recycled Polyester / 8% Polyester

# RESTED SHERPA 1/4 ZIP - SODALITE HEATHER

SAW800418-SDH

**saucony**



**Style #:** SAW800418-SDH

**Available Date:**

**Gender:** Women's

**Variations:** US:XXS-2XL

**Features/Technologies**

### Description

The Rested Sherpa ¼ Zip will help you stay comfy and warm all winter long thanks to the oh-so-cozy Sherpa fleece. It also features diamond-patterned pockets and a Saucony Originals logo to give it that classic, retro vibe.

### Features And Benefits

- Extra cozy pullover is made from recycled polyester Sherpa fleece
- 1/4 zip opening for easy on/off and extra venting
- Convenient dual snap pockets
- Features Saucony's iconic heritage woven label
- Primary Material: 247 g/m2 86% Recycled Polyester / 14% Polyester
- Pocket Material: 88 g/m2 100% Recycled Polyester



SAW800418-BKH  
BLACK HEATHER



SAW800418-LGH  
LIGHT GREY HEA...



# SOLSTICE HOODY - CRYSTAL

SAW800391-CY

**saucony**



SAW800391-BKH  
BLACK HEATHER

**Style #:** SAW800391-CY

**Available Date:**

**Gender:** Women's

**Variations:** US:XXS-2XL

**Features/Technologies**

## Description

The Solstice Collection was made to take you places and keep you warm along the way. These casual performance styles were designed using our coziest fabrics ever, leaving you toasty and comfortable for all the miles ahead.

## Features And Benefits

- Recycled polyester is brushed inside for warmth; Recycled polyester woven overlay for wind and water resistance with C0 Durable Water Repellent (DWR) to shield you from the elements.
- Wear alone or layer your way
- Hand pockets for easy access and warmth.
- Functional drawcord with catch loop
- Reflective logos keep you in sight.
- Primary Material: 251 g/m2 79% Recycled Polyester / 21% Spandex

# BLUSTER JACKET - VIZI RED

SAW800389-VR

**saucony**



**Style #:** SAW800389-VR

**Available Date:**

**Gender:** Women's

**Variations:** US:XXS-2XL

**Features/Technologies**

## Description

Made for those in-between days, the Bluster Jacket really does it all. The soft jacquard fleece on the inside keeps you cozy while the wind- and water-resistant materials work hard to protect you from the elements. Plus, you can take what you need on-the-go thanks to the zippered hand pockets.

## Features And Benefits

- Wind- and water-resistant soft shell features C0 Durable Water Repellant (DWR) to protect you from the elements.
- Jacquarded interior offers extra warmth
- Convenient zippered handpockets for storage
- Windflap and zipper garage give you even more protection from harsh elements
- Elasticated cuffs
- Reflective logos keep you in sight
- Primary Material: 199 g/m2 90% Recycled Polyester / 10% Spandex



SAW800389-BK  
BLACK



SAW800389-PL  
POOL



SAW800389-RN  
RAINFALL

# RESTED HOODY - SODALITE GRAPHIC

SAW800385-SDA2

**saucony**



Style #:	SAW800385-SDA2
Available Date:	
Gender:	Women's
Variations:	US:XXS-XL
Features/Technologies	

**Description**  
For those who love running, Saucony Rested Collection complements their personal style with a range of fresh graphics on quality streetwear.



SAW800385-BKHA2   SAW800385-LGHA2  
BLACK HEATHER ...   LIGHT GREY HEA...

- Features And Benefits**
- Brushed back cotton fleece
  - Jersey lined hood with functional drawcord
  - Woven logo mark in side seam
  - Rib knit cuff and hem
  - Primary Material: 280g/m2 55% Polyester / 41% Organic Cotton / 4% Spandex
  - Hood Liner Fabric: 140g/m2 100% Organic Cotton

# RESTED HOODY - BLUE RAZ

SAW800385-BR

**saucony**



**Style #:** SAW800385-BR

**Available Date:**

**Gender:** Women's

**Variations:** US:XXS-XL

**Features/Technologies**

## Description

New class of favorites.  
The Saucony Rested Collection complements your personal style with a range of fresh graphics on quality streetwear.

## Features And Benefits

- Brushed back cotton fleece
- Jersey lined hood with functional drawcord
- Woven logo mark in side seam
- Rib knit cuff and hem
- Main fabric: 280g/m2 55% Polyester / 41% Organic Cotton / 4% Spandex
- Hood liner fabric: 140g/m2 100% Organic Cotton



SAW800343-LGHFP  
LIGHT GREY HEA...



SAW800385-BKHS3  
BLACK HEATHER ...

# RESTED SHERPA 1/4 ZIP - SODALITE HEATHER

SAM800321-SDH

**saucony**



**Style #:** SAM800321-SDH

**Available Date:**

**Gender:** Men's

**Variations:** US:S-3XL

**Features/Technologies**

**Description**

The Rested Sherpa ¼ Zip will help you stay comfy and warm all winter long thanks to the oh-so-cozy Sherpa fleece. It also features diamond-patterned pockets and a Saucony Originals logo to give it that classic, retro vibe.

**Features And Benefits**

- Extra cozy pullover is made from recycled polyester Sherpa fleece
- 1/4 zip opening for easy on/off and extra venting
- Convenient dual snap pockets
- Features Saucony's iconic heritage woven label
- Primary Material: 247 g/m2 86% Recycled Polyester / 14% Polyester
- Pocket Material: 88 g/m2 100% Recycled Polyester



SAM800321-BKH  
BLACK HEATHER



SAM800321-LGH  
LIGHT GREY HEA...

# SOLSTICE ZIP HOODY - SODALITE HEATHER

SAM800298-SDH

**saucony**



SAM800298-BKH  
BLACK HEATHER

**Style #:** SAM800298-SDH

**Available Date:**

**Gender:** Men's

**Variations:** US:S-3XL

**Features/Technologies**

## Description

The Solstice Collection was made to take you places and keep you warm along the way. These casual performance styles were designed using our coziest fabrics ever, leaving you toasty and comfortable for all the miles ahead.

## Features And Benefits

- Recycled polyester is brushed inside for warmth; recycled polyester woven overlay for wind and water resistance with C0 Durable Water Repellent (DWR) to shield you from the elements.
- Wear alone or layer your way
- Hand pockets for easy access and warmth.
- Functional drawcord with catch loop
- Reflective logos keep you in sight.
- Primary Material: 251 g/m2 79% Recycled Polyester / 21% Spandex

# BLUSTER JACKET - VIZI RED

SAM800296-VR

**saucony**



**Style #:** SAM800296-VR

**Available Date:**

**Gender:** Men's

**Variations:** US:S-3XL

**Features/Technologies**

## Description

Made for those in-between days, the Bluster Jacket really does it all. The soft jacquard fleece on the inside keeps you cozy while the wind- and water-resistant materials work hard to protect you from the elements. Plus, you can take what you need on-the-go thanks to the zippered hand pockets.

## Features And Benefits

- Wind- and water-resistant soft shell features C0 Durable Water Repellant (DWR) to protect you from the elements.
- Jacquarded interior offers extra warmth
- Convenient zippered handpockets for storage
- Windflap and zipper garage give you even more protection from harsh elements
- Elasticated cuffs
- Reflective logos keep you in sight
- Primary Material: 199 g/m2 90% Recycled Polyester / 10% Spandex



SAM800296-BK  
BLACK



SAM800296-CY  
CRYSTAL



SAM800296-SN  
STONE

# RESTED HOODY - STONE HEATHER GRAPHIC

SAM800292-SNHA2

**saucony**



**Style #:** SAM800292-SNHA2

**Available Date:**

**Gender:** Men's

**Variations:** US:S-XXL

**Features/Technologies**

## Description

For those who love running, Saucony Rested Collection complements their personal style with a range of fresh graphics on quality streetwear.

## Features And Benefits

- Brushed back cotton fleece
- Jersey lined hood with functional drawcord
- Woven logo mark in side seam
- Rib knit cuff and hem
- Primary Material: 280g/m2 55% Polyester / 41% Organic Cotton / 4% Spandex
- Hood Liner Fabric: 140g/m2 100% Organic Cotton



SAM800292-LGHA2  
LIGHT GREY HEATHER



SAM800292-SDA2  
SODALITE GRAPHIC



# RESTED ANORAK - SEPIA ROSE

SAW800443-SR



SAW800443-ET  
ETHER

**saucony**

Style #:	SAW800443-SR
Available Date:	
Gender:	Women's
Variations:	
Features/Technologies	

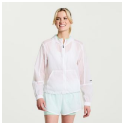
Description

Features And Benefits

# ELEVATE PACKAWAY JACKET - ZENITH

SAW800429-ZE

**saucony**



SAW800429-WH  
WHITE

Style #:	SAW800429-ZE
Available Date:	
Gender:	Women's
Variations:	
Features/Technologies	

## Description

## Features And Benefits

# BOULDER DRIZZLE JACKET - SODALITE

SAW800402-SD

**saucony**



**Style #:** SAW800402-SD

**Available Date:**

**Gender:** Women's

**Variations:** US:XXS-XL

**Features/Technologies**

### Description

The Boulder Collection features high performance apparel that keeps you at the top of your game, all year round. No matter the weather, you'll stay comfortable, protected, and ready for your best workout ever.

### Features And Benefits

- Features a 2.5 layer breathable waterproof shell with 3D-printed membrane
- Fully seam sealed for maximum waterproof protection, shielding you from the harshest conditions.
- Convenient zippered handpockets
- Elasticated cuff closure
- Adjustable hem helps you seal out the weather
- Adjustable hood ensures a perfect fit no matter what
- Hood is able to be secured down thanks to the bungee locker loop and



SAW800402-BK  
BLACK



SAW800402-CY  
CRYSTAL

# BOULDER OYSTERPUFF JACKET - CRYSTAL

SAW800401-CY

**saucony**



**Style #:** SAW800401-CY

**Available Date:**

**Gender:** Women's

**Variations: US:**XXS-XL

**Features/Technologies**

### Description

The Boulder Collection features high performance apparel that keeps you at the top of your game, all year round. No matter the weather, you'll stay comfortable, protected, and ready for your best workout ever.

### Features And Benefits

- Recycled polyester shell material is wind and water resistant with C0 Durable Water Repellent (DWR) shielding you from the elements.
- Recycled polyester insulation is compressible and down-like, giving you that super soft feeling.
- Insulation is nano-infused with oyster shells to help thermoregulation, plus it's also naturally anti-odor and anti-static
- Recycled polyester blend sleeves are brushed inside for extra warmth
- Features convenient zippered hand pockets
- Both the sleeve and hem are finished with elastic v-fold



SAW800401-BK  
BLACK

# RESTED ANORAK - INVADER

SAM800345-IN



**saucony**

Style #:	SAM800345-IN
Available Date:	
Gender:	Men's
Variations:	
Features/Technologies	

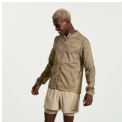
**Description**

**Features And Benefits**

# ELEVATE PACKAWAY JACKET - VAPOR

SAM800333-VA

**saucony**



SAM800333-PE  
PEWTER

Style #:	SAM800333-VA
Available Date:	
Gender:	Men's
Variations:	
Features/Technologies	

## Description

## Features And Benefits

# BOULDER DRIZZLE JACKET - SODALITE

SAM800306-SD

**saucony**



**Style #:** SAM800306-SD

**Available Date:**

**Gender:** Men's

**Variations:** US:S-XXL

**Features/Technologies**

### Description

The Boulder Collection features high performance apparel that keeps you at the top of your game, all year round. No matter the weather, you'll stay comfortable, protected, and ready for your best workout ever.

### Features And Benefits

- Features a 2.5-layer breathable waterproof shell with 3D-printed membrane
- Fully seam sealed for maximum waterproof protection, shielding you from the harshest conditions.
- Dual convenient zippered handpockets
- Elasticated cuff closure
- Adjustable hem helps you seal out the weather
- Adjustable hood ensures a perfect fit no matter what.
- Hood is able to be secured thanks to the bungee locker loop and small



SAM800306-BK  
BLACK



SAM800306-CY  
CRYSTAL

# BOULDER OYSTERPUFF JACKET - SODALITE

SAM800305-SD

**saucony**



SAM800305-BK  
BLACK

**Style #:** SAM800305-SD

**Available Date:**

**Gender:** Men's

**Variations:** US:S-XXL

**Features/Technologies**

### Description

The Boulder Collection features high performance apparel that keeps you at the top of your game, all year round. No matter the weather, you'll stay comfortable, protected, and ready for your best workout ever.

### Features And Benefits

- Recycled polyester shell material is wind- and water-resistant with CO Durable Water Repellent (DWR) shielding you from the elements.
- Recycled polyester insulation is compressible and down-like, giving you that super soft feeling.
- Insulation is nano-infused with oyster shells to help thermoregulation, plus it's also naturally anti-odor and anti-static
- Recycled polyester blend sleeves are brushed inside for extra warmth
- Features convenient zippered hand pockets
- Both the sleeve and hem are finished with elastic v-fold



# SAUCONY TRACK ANORAK - NIGHTSHADE

SAM800295-NS

**saucony**



**Style #:** SAM800295-NS

**Available Date:**

**Gender:** Men's

**Variations:** US:S-XXL

**Features/Technologies**

## Description

Throw on a throwback.

With a vintage-inspired style that's somehow more modern than ever, the Saucony Track Anorak is fun, vibrant, and perfect for just about any occasion, whether you're on the run or not.

## Features And Benefits

- Wind and water resistant fabric with C0 Durable Water Repellant (DWR)
- Half zip with draftflap and zipper garage
- 3 panel hood with stretch elastic binding at face opening
- Belly pocket under flap snaps for security with kangaroo entry hand pocket behind
- Bungee at hem for customizable fit
- Covered elastic at cuffs
- Heritage Originals woven label

ITEM # SAM800295-NS / 010000155 / 010000155 / 010000155



SAM800295-CM  
COOL MINT

# PACKAWAY JACKET - BLACK

SAM800281-BK



**saucony**

---

**Style #:** SAM800281-BK

---

**Available Date:**

---

**Gender:** Men's

---

**Variations:** US:S-XXL

---

**Features/Technologies**

---

## Description

Pack it up.

Meet the Packaway. Made for conquering the elements, stepping out with friends, and everything in between, this portable jacket is everything you need folded up into one. Literally.

## Features And Benefits

- Wind resistant with C0 Durable Water Repellent (DWR)
- Packs into left zippered hand pocket with internal clip loop
- Draftflap with zipper garage
- 3 panel hood locks down with neckloop and hook at back neck
- Adjustable bungee with toggle at hem lets you customize the fit
- Stretch elastic binding at cuffs
- Reflective logo marks
- 63g/m2 100% Recycled Polyester

# UNWIND CROP SHORT SLEEVE - WHITE

SAW800438-WH

**saucony**



SAW800438-BA  
BASALT

Style #:	SAW800438-WH
Available Date:	
Gender:	Women's
Variations:	
Features/Technologies	

## Description

## Features And Benefits

# PINNACLE CROP TANK - ZENITH

SAW800434-ZE



SAW800434-BK  
BLACK

**saucony**

Style #:	SAW800434-ZE
Available Date:	
Gender:	Women's
Variations:	
Features/Technologies	

## Description

## Features And Benefits

# PINNACLE TANK - SEPIA ROSE

SAW800432-SR



**saucony**

Style #:	SAW800432-SR
Available Date:	
Gender:	Women's
Variations:	
Features/Technologies	

## Description

## Features And Benefits

# ELEVATE TANK TOP - ZENITH TIE DYE PRINT

SAW800426-ZETDP

**saucony**



Style #:	SAW800426-ZETDP
Available Date:	
Gender:	Women's
Variations:	
Features/Technologies	

## Description



SAW800426-BK  
BLACK



SAW800426-WHT...  
WHITE TIE DYE P...

## Features And Benefits

# ELEVATE CROP TOP - ROSE

SAW800425-RO



SAW800425-BK  
BLACK

**saucony**

Style #:	SAW800425-RO
Available Date:	
Gender:	Women's
Variations:	
Features/Technologies	

Description

Features And Benefits

# ELEVATE SHORT SLEEVE - WHITE TIE DYE PRINT

SAW800424-WHTDP

**saucony**



Style #: SAW800424-WHTDP

Available Date:

Gender: Women's

Variations:

Features/Technologies

## Description



SAW800424-ATTDP  
ATMOS TIE DYE P...



SAW800424-RO  
ROSE

## Features And Benefits



# STOPWATCH GRAPHIC SINGLET - WHITE GRAPHIC

SAW800420-WHS3

**saucony**



Style #:	SAW800420-WHS3
Available Date:	
Gender:	Women's
Variations:	
Features/Technologies	

## Description



SAW800420-ATWP  
ATMOS WAVE PRI...

## Features And Benefits

# STOPWATCH GRAPHIC LONG SLEEVE - VIZI RED GRAPHIC

SAW800405-VRA2

**saucony**



**Style #:** SAW800405-VRA2

**Available Date:**

**Gender:** Women's

**Variations:** US:XXS-2XL

**Features/Technologies**

## Description

Feel as fresh as you look in the re-imagined Stopwatch Collection. Made from 100% recycled polyester and the highest performance in the range, it's everything you could want and more.

## Features And Benefits

- Reflective logos keep you in sight.
- Primary Material: 122g/m2 100% Recycled Polyester



SAW800405-BKA2  
BLACK GRAPHIC



SAW800405-PLA2  
POOL GRAPHIC



SAW800405-SDA2  
SODALITE GRAPHIC

# BOULDER BASELAYER - RAINFALL HEATHER

SAW800403-RNH

**saucony**



**Style #:** SAW800403-RNH

**Available Date:**

**Gender:** Women's

**Variations:** US:XXS-XL

**Features/Technologies**

### Description

The Boulder Collection features high performance apparel that keeps you at the top of your game, all year round. No matter the weather, you'll stay comfortable, protected, and ready for your best workout ever.

### Features And Benefits

- Recycled polyester blend features a french terry back to wick moisture away from the skin.
- Forward shoulder seam offers extra comfortable layering
- Convenient dual watch window on both sleeves
- Reflective logo keeps you in sight
- Primary Material: 156 g/m2 93% Recycled Polyester / 7% Spandex



SAW800403-EMH  
EMBER HEATHER



SAW800403-LGH  
LIGHT GREY HEATHER

# SUNDAY LAYER TOP - EMBER HEATHER

SAW800395-EMH

**saucony**



**Style #:** SAW800395-EMH

**Available Date:**

**Gender:** Women's

**Variations:** US:XXS-2XL

**Features/Technologies**

**Description**

The Sunday Collection is made for kicking back and relaxing. These casual, comfortable styles are perfect for a lazy Sunday but can handle those impromptu workouts, too.

**Features And Benefits**

- Super soft brushed recycled polyester is cozier than ever
- Wear alone or layer it your way
- Vented stepped hem covers without binding
- Self fabric cuffs
- Reflective logos keep you in sight
- Primary Material: 180 g/m2 88% Recycled Polyester / 12% Spandex



SAW800395-BKH  
BLACK HEATHER

# SUNDAY 1/4 ZIP - RAINFALL HEATHER

SAW800394-RNH

**saucony**



**Style #:** SAW800394-RNH

**Available Date:**

**Gender:** Women's

**Variations:** US:XXS-2XL

**Features/Technologies**

### Description

The Sunday Collection is made for kicking back and relaxing. These casual, comfortable styles are perfect for a lazy Sunday but can handle those impromptu workouts, too.

### Features And Benefits

- Super soft brushed recycled polyester is cozier than ever
- Wear alone or layer it your way
- Stylish 1/4 zip features zipper garage for venting plus easy on/off
- Self fabric cuffs
- Reflective logos keep you in sight
- Primary Material: 180 g/m2 88% Recycled Polyester / 12% Spandex



SAW800394-BK  
BLACK

# SOLSTICE 1/4 ZIP - TURQUOISE HEATHER

SAW800390-TQH

**saucony**



**Style #:** SAW800390-TQH

**Available Date:**

**Gender:** Women's

**Variations:** US:XXS-2XL

**Features/Technologies**

## Description

The Solstice Collection was made to take you places and keep you warm along the way. These casual performance styles were designed using our coziest fabrics ever, leaving you toasty and comfortable for all the miles ahead.

## Features And Benefits

- Recycled polyester is brushed inside for warmth, keeping you cozy.
- So cozy you can wear it alone or layer your way.
- 1/4 zip with zipper garage for venting, plus easy on/off
- Convenient thumb loops for extra warmth
- Reflective logos keep you in sight
- Primary Material: 251 g/m2 79% Recycled Polyester / 21% Spandex



SAW800390-BK  
BLACK



SAW800390-PLH  
POOL HEATHER

# RESTED T-SHIRT - SAND GRAPHIC

SAW800387-SAA2

**saucony**



SAW800387-EMHA2  
EMBER HEATHER...

**Style #:** SAW800387-SAA2

**Available Date:**

**Gender:** Women's

**Variations:** US:XXS-XL

**Features/Technologies**

## Description

For those who love running, Saucony Rested Collection complements their personal style with a range of fresh graphics on quality streetwear.

## Features And Benefits

- Organic cotton jersey knit
- Woven logo mark in side seam
- Primary Material: 140g/m2 100% Organic Cotton

# RESTED CREW - WHITE GRAPHIC

SAW800386-WHA2



SAW800386-LGHA2  
LIGHT GREY HEATHER



SAW800386-SDA2  
SODALITE GRAPHIC



SAW800386-SNHA2  
STONE HEATHER

**saucony**

**Style #:** SAW800386-WHA2

**Available Date:**

**Gender:** Women's

**Variations:** US:XXS-XL

**Features/Technologies**

## Description

For those who love running, Saucony Rested Collection complements their personal style with a range of fresh graphics on quality streetwear.

## Features And Benefits

- Brushed back cotton fleece
- Woven logo mark in side seam
- Rib knit cuff and hem
- Primary Material: 280g/m2 55% Polyester / 41% Organic Cotton / 4% Spandex



# STOPWATCH GRAPHIC SHORT SLEEVE - WHITE GRAPHIC

SAW800372-WHA2

**saucony**



**Style #:** SAW800372-WHA2

**Available Date:**

**Gender:** Women's

**Variations:** US:XXS-2XL

**Features/Technologies**

**Description**

Feel as fresh as you look in the re-imagined Stopwatch Collection. Made from 100% recycled polyester and the highest performance in the range, it's everything you could want and more.

**Features And Benefits**

- Reflective logos keep you in sight.
- Primary Material: 122g/m2 100% Recycled Polyester



SAW800372-BKA2  
BLACK GRAPHIC



SAW800372-PLA2  
POOL GRAPHIC

STOPWATCH GRAPHIC SS - LIGHT GREY HEATHER GRAPHIC

saucony

SAW800372-LGHS3



Style #: SAW800372-LGHS3

Available Date:

Gender: Women's

Variations:

Features/Technologies

Description

Features And Benefits

# STOPWATCH LONG SLEEVE - RAINFALL HEATHER

SAW800371-RNH

**saucony**



**Style #:** SAW800371-RNH

**Available Date:**

**Gender:** Women's

**Variations:** US:XXS-2XL

**Features/Technologies**

### Description

Feel as fresh as you look in the re-imagined Stopwatch Collection. Made from 100% recycled polyester and the highest performance in the range, it's everything you could want and more.

### Features And Benefits

- Reflective logos keep you in sight.
- \*Black carries over to SS23
- Primary Material: 122g/m2 100% Recycled Polyester



SAW800371-EM  
EMBER



SAW800371-LGH  
LIGHT GREY HEA...

# STOPWATCH LONG SLEEVE - BLACK

SAW800371-BK

**saucony**



---

**Style #:** SAW800371-BK

---

**Available Date:** 9/1/2022

---

**Gender:** Women's

---

**Variations:** US:XXS-2XL

---

**Features/Technologies**

---

---

---

## Description

Performance and sustainability, together at last.

Feel as fresh as you look in the re-imagined Stopwatch Collection. Made from 100% recycled polyester and the highest performance in the range, it's everything you could want and more.

## Features And Benefits

- Reflective logo marks
- 122g/m2 100% Recycled Polyester
- \*Black carries over to AW22

# STOPWATCH LONG SLEEVE - ATMOS

SAW800371-AT



**saucony**

Style #:	SAW800371-AT
Available Date:	
Gender:	Women's
Variations:	
Features/Technologies	

Description

Features And Benefits

# STOPWATCH SHORT SLEEVE - ZENITH HEATHER

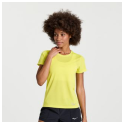
SAW800370-ZEH

**saucony**



Style #:	SAW800370-ZEH
Available Date:	
Gender:	Women's
Variations:	
Features/Technologies	

## Description



SAW800370-CT  
CITRON



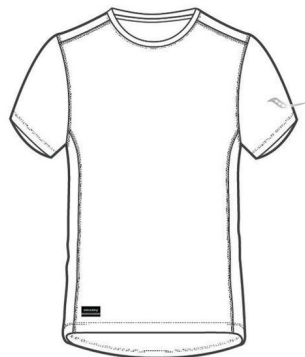
SAW800370-ETH  
ETHER HEATHER

## Features And Benefits

# STOPWATCH SHORT SLEEVE - WHITE

SAW800370-WH

**saucony**



---

**Style #:** SAW800370-WH

---

**Available Date:** 9/1/2022

---

**Gender:** Women's

---

**Variations: US:**XXS-2XL

---

**Features/Technologies**

---

---

---

## Description

Performance and sustainability, together at last.

Feel as fresh as you look in the re-imagined Stopwatch Collection. Made from 100% recycled polyester and the highest performance in the range, it's everything you could want and more.

## Features And Benefits

- Reflective logo marks
- 122g/m2 100% Recycled Polyester
- \*Black and White carry over to AW22



SAW800370-BK  
BLACK  
8/31/2022

# STOPWATCH SINGLET - VIZI RED GRAPHIC

SAW800369-VRA2

**saucony**



**Style #:** SAW800369-VRA2

**Available Date:**

**Gender:** Women's

**Variations: US:**XXS-2XL

**Features/Technologies**

## Description

Feel as fresh as you look in the re-imagined Stopwatch Collection. Made from 100% recycled polyester and the highest performance in the range, it's everything you could want and more.

## Features And Benefits

- Reflective logos keep you in sight.
- \*Black carries over to SS23
- Primary Material: 122g/m2 100% Recycled Polyester



# STOPWATCH SINGLET - ROSE HEATHER

SAW800369-ROH

**saucony**



Style #:	SAW800369-ROH
Available Date:	
Gender:	Women's
Variations:	
Features/Technologies	

## Description

## Features And Benefits



SAW800369-BK  
BLACK  
8/31/2022



SAW800369-ETH  
ETHER HEATHER



SAW800369-LGH  
LIGHT GREY HEA...

# SUNDAY 1/4 ZIP - POINCIANA HEATHER

SAW800354-PCH

**saucony**



Style #:	SAW800354-PCH
Available Date:	
Gender:	Women's
Variations:	US:XXS-XL
Features/Technologies	

**Description**  
Couch to 5K.  
Soft-brushed and luxuriously cozy, the Sunday collection is perfect for warmups, lounging, and working from home, but don't be fooled—these pieces are also equipped to handle high-intensity workouts, too.

**Features And Benefits**  
GOOD THINGS TO KNOW  
- Brushed fabrics and comfortable fit keep you warm without overheating.  
- These performance pieces have casual appeal thanks to features like funnel collars, kangaroo pockets, and cinchable hems.  
- Recycled polyester is easier on the environment, so you can feel good kicking back in these styles.

**KEY DETAILS**  
- Soft brushed fabric for cozy feel  
- Funnel collar for extra warmth  
- Kangaroo pocket for storage  
- Cinchable hem for a snug fit

# PINNACLE SLEEVELESS - MINERAL

SAM800337-MI



SAM800337-BO  
BLAZING ORANGE

**saucony**

Style #:	SAM800337-MI
Available Date:	
Gender:	Men's
Variations:	
Features/Technologies	

## Description

## Features And Benefits

# ELEVATE SHORT SLEEVE - SULPHUR

SAM800331-SL



SAM800331-HZH  
HORIZON HEATH...

**saucony**

Style #:	SAM800331-SL
Available Date:	
Gender:	Men's
Variations:	
Features/Technologies	

## Description

## Features And Benefits

# ELEVATE SLEEVELESS - VAPOR

SAM800330-VA



**saucony**

Style #:	SAM800330-VA
Available Date:	
Gender:	Men's
Variations:	
Features/Technologies	

Description

Features And Benefits

STOPWATCH GRAPHIC SINGLET - LUNAR ROCK CAMO PRINT

saucony

SAM800325-LRCP



SAM800325-INHS3  
INVADER HEATH...

Style #: SAM800325-LRCP

Available Date:

Gender: Men's

Variations:

Features/Technologies

Description

Features And Benefits

# STOPWATCH GRAPHIC LONG SLEEVE - VIZI RED GRAPHIC

SAM800311-VRA2

**saucony**



**Style #:** SAM800311-VRA2

**Available Date:**

**Gender:** Men's

**Variations:** US:S-3XL

**Features/Technologies**

## Description

Feel as fresh as you look in the re-imagined Stopwatch Collection. Made from 100% recycled polyester and the highest performance in the range, it's everything you could want and more.

## Features And Benefits

- Reflective logos keep you in sight.
- Primary Material: 122g/m2 100% Recycled Polyester



SAM800311-BKA2  
BLACK GRAPHIC



SAM800311-LNA2  
LAGOON GRAPHIC



SAM800311-SDA2  
SODALITE GRAPHIC

# BOULDER BASELAYER - TURQUOISE HEATHER

SAM800309-TQH

**saucony**



SAM800309-BKH  
BLACK HEATHER

**Style #:** SAM800309-TQH

**Available Date:**

**Gender:** Men's

**Variations:** US:S-XXL

**Features/Technologies**

### Description

The Boulder Collection features high performance apparel that keeps you at the top of your game, all year round. No matter the weather, you'll stay comfortable, protected, and ready for your best workout ever.

### Features And Benefits

- Recycled polyester blend features a french terry back to wick moisture away from the skin.
- Forward shoulder seam offers extra comfortable layering
- Convenient dual watch window on both sleeves
- Primary Material: 156 g/m2 93% Recycled Polyester / 7% Spandex
- Reflective logo keeps you in sight



# SUNDAY 1/4 ZIP - BLACK HEATHER

SAM800301-BKH

**saucony**



SAM800301-BK  
BLACK

**Style #:** SAM800301-BKH

**Available Date:**

**Gender:** Men's

**Variations:** US:S-3XL

**Features/Technologies**

## Description

The Sunday Collection is made for kicking back and relaxing. These casual, comfortable styles are perfect for a lazy Sunday but can handle those impromptu workouts, too.

## Features And Benefits

- Super soft brushed recycled polyester is cozier than ever
- Wear alone or layer it your way
- Stylish 1/4 zip features zipper garage for venting plus easy on/off
- Self fabric cuffs
- Reflective logos keep you in sight
- Primary Material: 180 g/m2 88% Recycled Polyester / 12% Spandex

# SOLSTICE 1/4 ZIP - SODALITE HEATHER

SAM800297-SDH

**saucony**



**Style #:** SAM800297-SDH

**Available Date:**

**Gender:** Men's

**Variations:** US:S-3XL

**Features/Technologies**

## Description

The Solstice Collection was made to take you places and keep you warm along the way. These casual performance styles were designed using our coziest fabrics ever, leaving you toasty and comfortable for all the miles ahead.

## Features And Benefits

- Recycled polyester is brushed inside for warmth, keeping you cozy
- So cozy you can wear it alone or layer your way.
- 1/4 zip with zipper garage for venting, plus easy on/off
- Convenient thumbloops for extra warmth
- Reflective logos keep you in sight
- Primary Material: 251 g/m2 79% Recycled Polyester / 21% Spandex



SAM800297-BK  
BLACK



SAM800297-EMH  
EMBER HEATHER

# RESTED T-SHIRT - LIGHT GREY HEATHER GRAPHIC

SAM800294-LGHS3

**saucony**



Style #: SAM800294-LGHS3

Available Date:

Gender: Men's

Variations:

Features/Technologies

## Description

## Features And Benefits

# RESTED CREW - SODALITE GRAPHIC

SAM800293-SDA2

**saucony**



**Style #:** SAM800293-SDA2

**Available Date:**

**Gender:** Men's

**Variations:** US:S-XXL

**Features/Technologies**

## Description

For those who love running, Saucony Rested Collection complements their personal style with a range of fresh graphics on quality streetwear.

## Features And Benefits

- Brushed back cotton fleece
- Woven logo mark in side seam
- Rib knit cuff and hem
- Primary Material: 280g/m2 55% Polyester / 41% Organic Cotton / 4% Spandex
- Hood Liner Fabric: 140g/m2 100% Organic Cotton

# STOPWATCH GRAPHIC SHORT SLEEVE - WHITE GRAPHIC

SAM800280-WHA2

**saucony**



**Style #:** SAM800280-WHA2

**Available Date:**

**Gender:** Men's

**Variations:** US:S-3XL

**Features/Technologies**

## Description

Feel as fresh as you look in the re-imagined Stopwatch Collection. Made from 100% recycled polyester and the highest performance in the range, it's everything you could want and more.

## Features And Benefits

- Reflective logos keep you in sight.
- Primary Material: 122g/m2 100% Recycled Polyester



SAM800280-BKA2  
BLACK GRAPHIC



SAM800280-SDA2  
SODALITE GRAPHIC

STOPWATCH GRAPHIC SS - LIGHT GREY HEATHER GRAPHIC

saucony

SAM800280-LGHS3



Style #: SAM800280-LGHS3

Available Date:

Gender: Men's

Variations:

Features/Technologies

Description

Features And Benefits

# STOPWATCH LONG SLEEVE - WHITE

SAM800279-WH

**saucony**



**Style #:** SAM800279-WH

**Available Date:**

**Gender:** Men's

**Variations:** US:S-3XL

**Features/Technologies**

**Description**

Performance and sustainability, together at last. Feel as fresh as you look in the re-imagined Stopwatch Collection. Made from 100% recycled polyester and the highest performance in the range, it's everything you could want and more.

**Features And Benefits**

- Reflective logo marks
- 122g/m2 100% Recycled Polyester
- \*Black carries over to AW22



SAM800197-BN  
BLUE NIGHTS



SAM800279-BK  
BLACK  
8/31/2022



SAM800279-BR  
BLUE RAZ



SAM800279-RF  
ROCKFACE

# STOPWATCH LONG SLEEVE - SODALITE

SAM800279-SD

**saucony**



**Style #:** SAM800279-SD

**Available Date:**

**Gender:** Men's

**Variations:** US:S-3XL

**Features/Technologies**

## Description

Feel as fresh as you look in the re-imagined Stopwatch Collection. Made from 100% recycled polyester and the highest performance in the range, it's everything you could want and more.

## Features And Benefits

- Reflective logos keep you in sight.
- \*Black carries over to SS23
- Primary Material: 122g/m2 100% Recycled Polyester



# STOPWATCH LONG SLEEVE - AZURE HEATHER

SAM800279-AZH

**saucony**



Style #: SAM800279-AZH

Available Date:

Gender: Men's

Variations:

Features/Technologies

Description

Features And Benefits

# STOPWATCH SHORT SLEEVE - VIZI RED

SAM800278-VR

**saucony**



**Style #:** SAM800278-VR

**Available Date:**

**Gender:** Men's

**Variations:** US:S-3XL

**Features/Technologies**

## Description

Feel as fresh as you look in the re-imagined Stopwatch Collection. Made from 100% recycled polyester and the highest performance in the range, it's everything you could want and more.

## Features And Benefits

- Reflective logos keep you in sight.
- \*Black carries over to SS23
- Primary Material: 122g/m2 100% Recycled Polyester



SAM800278-FQH  
FLAME QUARTZ ...

# STOPWATCH SHORT SLEEVE - VAPOR

SAM800278-VA

**saucony**



**Style #:** SAM800278-VA

**Available Date:**

**Gender:** Men's

**Variations:**

**Features/Technologies**

**Description**



SAM800278-HZH  
HORIZON HEATH...



SAM800278-INH  
INVADER HEATH...

**Features And Benefits**

# STOPWATCH SHORT SLEEVE - BLACK

SAM800278-BK

**saucony**



---

**Style #:** SAM800278-BK

---

**Available Date:** 9/1/2022

---

**Gender:** Men's

---

**Variations:** US:S-3XL

---

**Features/Technologies**

---

---

---

## Description

Feel as fresh as you look in the re-imagined Stopwatch Collection. Made from 100% recycled polyester and the highest performance in the range, it's everything you could want and more.

## Features And Benefits

- Reflective logos keep you in sight.
- \*Black carries over to SS23
- Primary Material: 122g/m2 100% Recycled Polyester

# STOPWATCH SINGLET - WHITE

SAM800277-WH

**saucony**




Style #:	SAM800277-WH
Available Date:	
Gender:	Men's
Variations:	US:S-3XL
Features/Technologies	


**Description**

Feel as fresh as you look in the re-imagined Stopwatch Collection. Made from 100% recycled polyester and the highest performance in the range, it's everything you could want and more.


- Features And Benefits**
- Reflective logos keep you in sight.
  - \*Black carries over to SS23
  - Primary Material: 122g/m2 100% Recycled Polyester



SAM800277-BK  
BLACK  
8/31/2022



SAM800277-MAH  
MARIGOLD HEAT ...



SAM800277-PP  
POPPY

# STOPWATCH SINGLET - VIZI RED GRAPHIC

SAM800277-VRA2

**saucony**



**Style #:** SAM800277-VRA2

**Available Date:**

**Gender:** Men's

**Variations:** US:S-3XL

**Features/Technologies**

## Description

Feel as fresh as you look in the re-imagined Stopwatch Collection. Made from 100% recycled polyester and the highest performance in the range, it's everything you could want and more.

## Features And Benefits

- Reflective logos keep you in sight.
- \*Black carries over to SS23
- Primary Material: 122g/m2 100% Recycled Polyester



SAM800277-FQH  
FLAME QUARTZ ...



SAM800277-RNH  
RAINFALL HEATH...

# SUNDAY 1/4 ZIP - BLUE NIGHTS HEATHER

SAM800267-BNH

**saucony**



**Style #:** SAM800267-BNH

**Available Date:**

**Gender:** Men's

**Variations:** US:S-XXL

**Features/Technologies**

**Description**

Couch to 5K.  
Soft-brushed and luxuriously cozy, the Sunday 1/4 Zip is perfect for warmups, lounging, and working from home, but don't be fooled—these pieces are also equipped to handle high-intensity workouts, too.

**Features And Benefits**

- GOOD THINGS TO KNOW
- Brushed fabrics and comfortable fit keep you warm without overheating.
  - This performance piece does double duty in your kit. On cool days, it's all you need to be comfortable. On cold days, it layers perfectly under one of our jackets
  - Recycled polyester is easier on the environment, so you can feel good kicking back in these styles.