

**jaypro  
sports**



**Athletic Equipment for  
New Construction Facilities**



# OUR STORY...

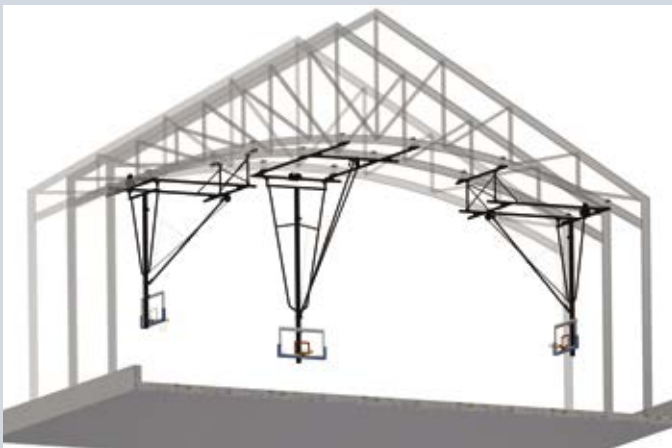
Multi-sport athletic facilities count on Jaypro Sports for innovative designs that are safe, durable and long lasting

**DESIGNED TO PERFORM. MANUFACTURED TO LAST.**



## Design

We use state of the art 3-D modeling and collaborative software, to ensure that all products meet the highest performance standards. Jaypro's team can recommend the proper equipment for any facility and help all trades along the way, including locating supplemental steel supports for backstops or other ceiling suspended gymnasium equipment. Our expert design team will develop innovative solutions to meet your most challenging facility requirements.



## Engineering

Our Engineers are using the latest analytical software. This allows us to analyze designs to give you unsurpassed performance with optimum safety. Jaypro's Engineers, Designers and Project Managers are well trained and eager to help you realize your vision. We offer the best warranties in the industry and are proud of our strong record of standing behind our products.



## Manufacturing

All employees at Jaypro Sports are dedicated to providing you with sports equipment that is designed and manufactured to the highest standards in the industry. All welding is done by certified welders in our own factory. Our state of the art powder coating system is very efficient and cost effective.



## INDOOR FACILITY

Basketball.....	4
Volleyball.....	20
Divider Curtains .....	30
Gymnasium Equipment .....	46

## OUTDOOR FACILITY

Barrier Netting .....	56
Football .....	62
Basketball.....	66
Baseball.....	74
Soccer .....	86
Rugby & Field Hockey.....	94
Lacrosse .....	95
Volleyball.....	96
Tennis.....	98
Track & Field .....	100
Benches & Bleachers.....	106



Manufactured in Waterford, CT

## EQUIP AMERICA...

Jaypro Sports is working to equip America one facility at a time! With over 65 years of experience, Jaypro Sports has developed the most robust and reliable equipment for facilities of all shapes and sizes. Our complete line of indoor gymnasium and outdoor field equipment is designed for all levels of play, from Pro to Recreational. Look to Jaypro Sports to EQUIP your facility, field or court today.



# INDOOR EQUIPMENT



Ceiling Suspended/  
Wall Mounted  
Basketball  
Backstops



Scoreboards

WallGuard  
Wall Padding

Overhead/In-Floor  
Volleyball Systems





Jaypro Sports is a leading authority for institutional sports equipment and athletic field/facility solutions. We excel at engineering and providing peak performance equipment for athletic facilities across the United States. Our customers know they can count on Jaypro Sports to deliver when it comes to product quality, safety, industry knowledge, and reliable service.

**DESIGNED TO PERFORM.  
MANUFACTURED TO LAST.**



# BASKETBALL







As a multi-sport supplier, Jaypro continually designs and builds products that meet the needs of our customers no matter what sport they play. Innovative designs and quality materials make Jaypro Sports a winning partner when outfitting your facility with sport and recreation equipment!

From large multi-sport facilities to small elementary schools, Jaypro Sports will provide the proper equipment to meet the facility needs. Our complete line of indoor gymnasium equipment includes ceiling suspended and wall mounted backstops with all the pieces and parts to handle what you want and need for your players! Here at Jaypro, we are committed to quality, innovation and performance.

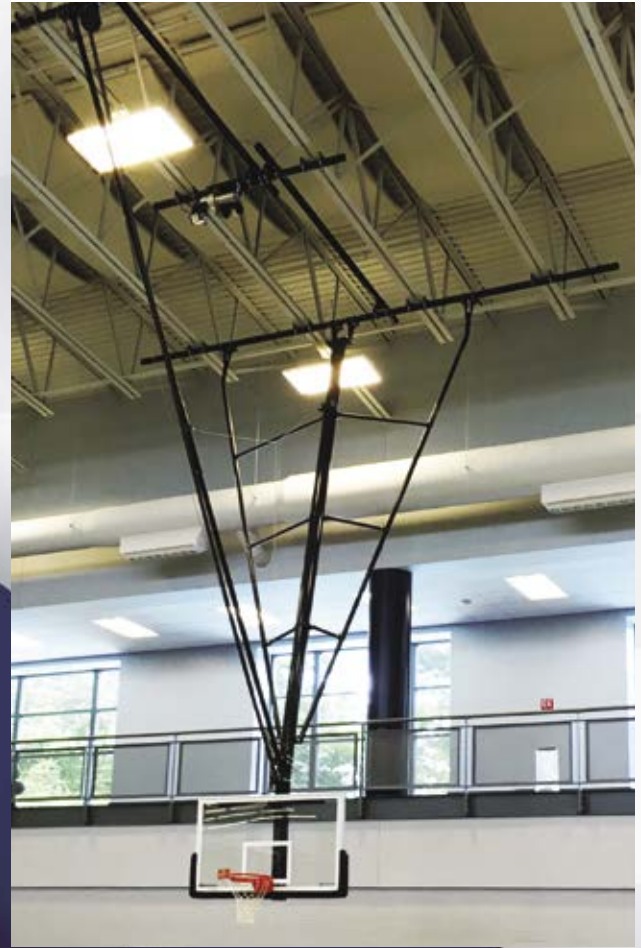


# SINGLE DROP SERIES

## J800 SINGLE DROP DESIGN



## J800-BT BOLT-TOGETHER DESIGN



The J800 series by Jaypro Sports is the most stable "single drop" design in the industry.

Our exclusive 2 $\frac{3}{8}$ " curved sway braces are expertly welded up to a 32' attachment height, featuring a 6 $\frac{5}{8}$ " center tube to provide maximum performance and stability. The center tube is attached to a 5" structural C-channel, which provides 20% more weld and 34% more of the tube being supported by the channel than our competitors.

The single drop system from Jaypro Sports can be extended to 40' and beyond for higher ceiling heights with our fully bolt-together design, known as the **J800-BT** series by Jaypro Sports. This rigid design allows for easier installation and transport of materials into the existing building.

The Single Drop series are available in many folding and non-folding styles with either manual or electric operation. Customize the look of your athletic facility with the selection of colors available. Eliminate costly painting in the field, powder coat it in the factory!

## J800 SINGLE DROP SERIES - FOLDING OPTIONS

### FORWARD FOLD

**Rear Brace** J817-FFRB

**Front Brace** J849-FFFB

**Offset Mast** J850-OSB



J817

Forward fold, rear braced backstop is one of our most popular models



J849

Forward fold, front braced backstop fits demanding building conditions



J850

Forward fold, offset mast backstop helps to avoid obstructions in the ceiling

### REAR FOLD

**Rear Brace** J823-BF

**Rear Brace** J860-RF



J823

Rear fold, rear braced backstop suited for facilities with plenty of room behind the backboard



J860

Roll fold, rear braced backstop for facilities lacking rear fold space

### STATIONARY

**Wall Braced** J818-WB

**Non-Folding** J826-NF



J818

Stationary, wall braced backstop for spaces that don't require folding



J826

Stationary, ceiling braced backstop for spaces that don't require folding

### SIDE FOLD

**Side Brace** J855-SFB

**Offset** J865-OSB



J855

Side fold, side braced backstop helps work around congestion in the ceiling



J865

Side fold, offset backstop is for facilities with a lot of barriers in the facility



**POWDER COAT COLORS:** Black is standard, other powder coat colors should be specified.



RED



NAVY  
BLUE



YELLOW



GOLD



GRAY



BLACK



MAROON



DARK  
GREEN



KELLY  
GREEN



ROYAL  
BLUE



WHITE



ORANGE

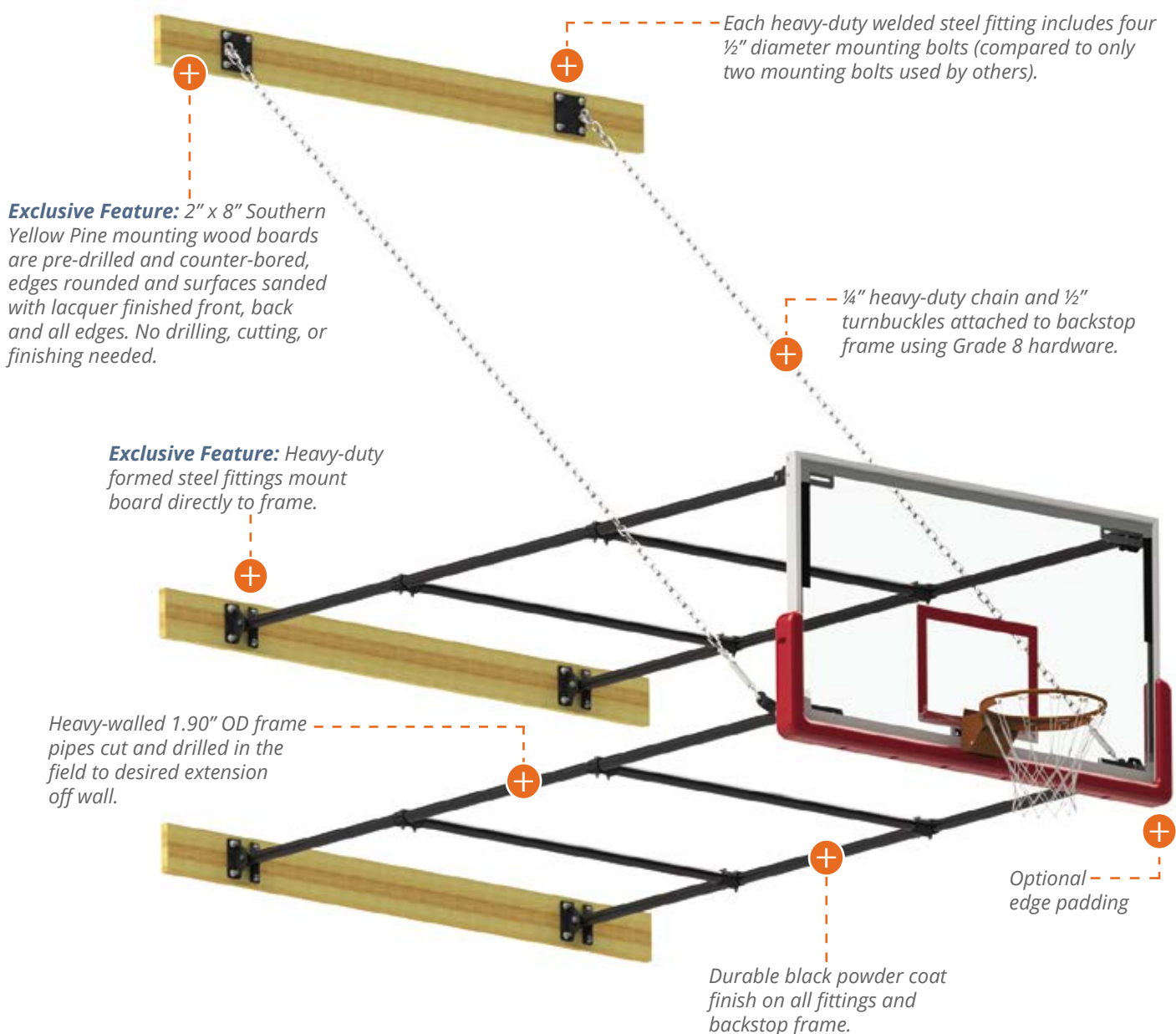


PURPLE



# WALL MOUNTED BACKSTOPS

Jaypro wall mounted backstops are ideal for side courts and where low ceilings or other factors prohibit the use of other types of backstops. Simple, rigid designs include numerous features that excel over any competitors system and will provide years of top quality performance.



## WALL-MOUNTED BACKSTOPS INCLUDE:

- 42" Unbreakable Glass Board (GBRUB-42)
- Contender Pro Breakaway Goal (GBA-642)

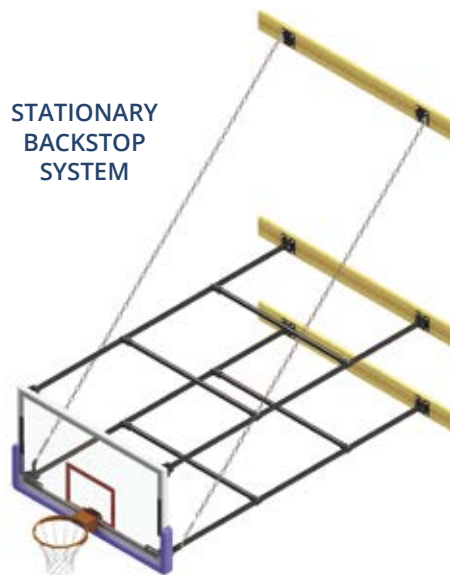
## WALL-MOUNTED BACKSTOPS OPTIONS:

- Manual or electric height adjuster
- Backboard edge padding (page 17)
- Wall anchors

## STATIONARY BACKSTOP SYSTEM (1300)

The stationary backstop is the economical choice for extensions from 2' - 12' from the wall. Simple, rugged design provides years of quality play.

STATIONARY  
BACKSTOP  
SYSTEM



## FOLD-UP BACKSTOP SYSTEM (1400)

The fold up backstop is available with extensions ranging from 2' - 12'. Unit to fold-up against the wall and out of the way when not in use. Backboard is raised and lowered by manual or electric winch. Jaypro recommends the use of safe straps (PL-1000) on all fold-up units.

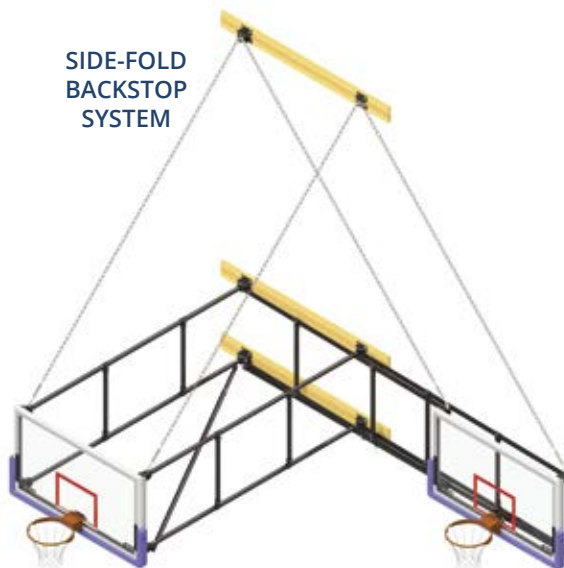
FOLD-UP  
BACKSTOP  
SYSTEM



## SIDE-FOLD BACKSTOP SYSTEM (1500)

The side fold backstop is ideal where lack of ceiling height prohibits a fold-up style backstop. Available extensions range from 2' - 12'. Unit to fold to one side manually and out of the way when not in use. Offset fittings on one side allows backstop to fold compactly and flat against the wall. Manually operated cross brace securely locks the backstop into playing position.

SIDE-FOLD  
BACKSTOP  
SYSTEM



### Important notes for Wall-Mounted

**Backstops and Shooting Stations:** *Wall-mounted backstop systems should only be installed on walls capable of supporting the weight of the equipment plus the additional weight of a player hanging on the rim. Consult an architect, structural engineer or contractor if necessary. Jaypro Sports bears no responsibility for the structural integrity of the wall the backstop is mounted on.*

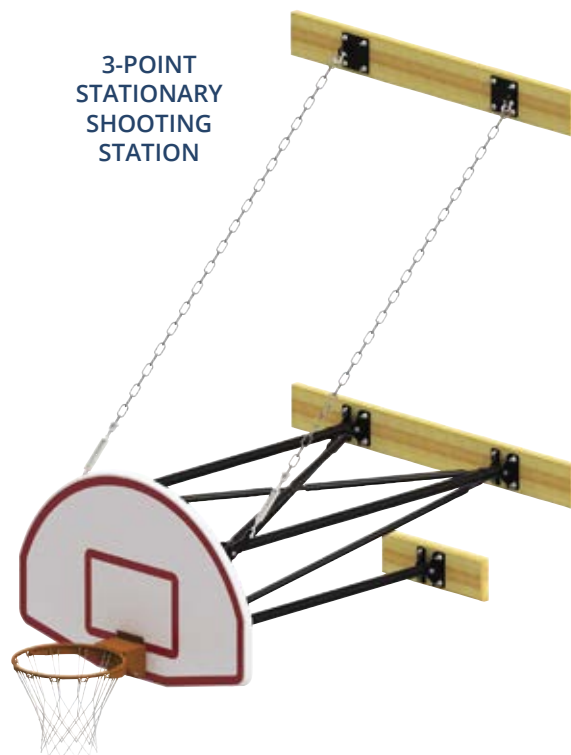


## 3-POINT STATIONARY FAN BOARD WALL-MOUNTED SHOOTING STATION

Economy stationary wall-mounted and wall braced shooting station includes 36" Aluminum Fan Board (ALB-24BT), Contender Breakaway Goal (GBA-548), 1.90" OD heavy-duty frame and wood stringers. Available extensions range from 6" - 10'. System is designed to consist of three (3) pipe extension frames, internal bracing, and upper chain supports. Direct goal mounted to eliminate any strain on the board. Requires cutting and drilling in the field to achieve desired extension off wall. Wall anchors specified and supplied by installer.

### Face of Bank

6" - 2'	N2FB
2' - 3½'	N236FB
3' - 6½'	N366FB
6' - 8'	N68FB
8' - 10'	N810FB



## COLUMN MOUNTED FAN BOARD SHOOTING STATION

Designed to mount directly to an exposed vertical or tapered column. Shooting station includes 36" Aluminum Fan Board, Contender Breakaway Goal (GBA-548), and structure to attach. Available with or without 8' - 10' manual height adjuster (HAHC handle included). Refer to spec sheet for column dimension requirements and additional information.

Station w/ Height Adjuster	CMWH
Station w/o Height Adjuster	CMSS

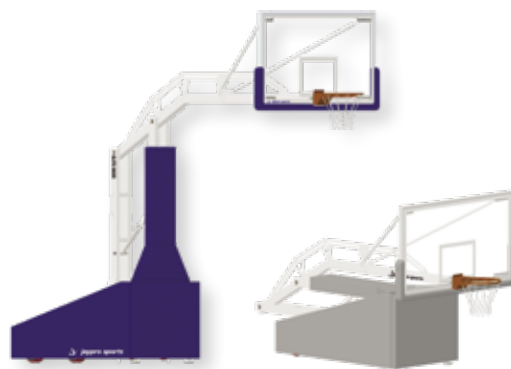
COLUMN  
MOUNTED  
SHOOTING  
STATION



**Important notes for Wall-Mounted Backstops and Shooting Stations:** *Wall-mounted backstop systems should only be installed on walls capable of supporting the weight of the equipment plus the additional weight of a player hanging on the rim. Consult an architect, structural engineer or contractor if necessary. Jaypro Sports bears no responsibility for the structural integrity of the wall the backstop is mounted on.*

## PORTABLE BASKETBALL BACKSTOPS ALSO AVAILABLE

Visit [Jaypro.com](http://Jaypro.com) or contact a Jaypro Sports Dealer near you!





# BACKSTOP WINCHES & SAFETY STRAP

## DIRECT DRIVE ELECTRIC BACKSTOP WINCH

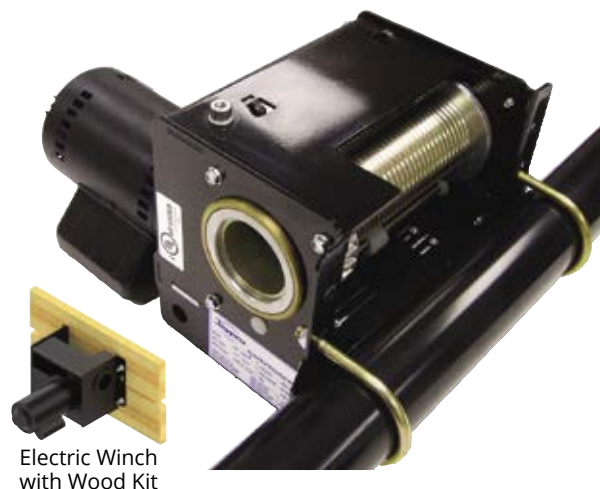
Designed to raise and lower wall-mounted or 32' and under ceiling suspended backstop units. Universal mounting allows easy installation for new or existing conditions. Features a 1 HP 115 volt single phase motor. Maintenance free operation with no belts or chains to replace.

<b>Winch only</b>	TW-2000-1
<b>Winch w/ Key Switch</b>	TW-2000

## WALL MOUNTING KIT FOR DIRECT DRIVE BACKSTOP WINCH

Kit includes winch, key switch, mounting boards and hardware. Wall anchors should be specified and supplied by installer.

<b>Winch w/Wall Mounting Kit</b>	TW-2000KT1
----------------------------------	------------



Electric Winch with Wood Kit

## MANUAL BACKSTOP WINCH

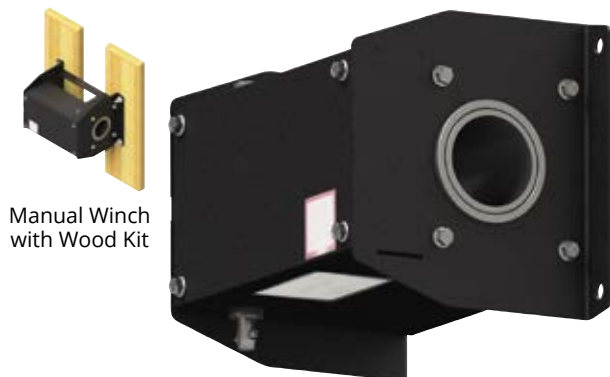
Designed to raise and lower wall-mounted or 27' and under ceiling suspended backstop units. Maintenance free operation with no belts or chains to replace.

<b>Winch only</b>	TW-700M
<b>Manual Winch Handle</b>	TW700H

## WALL MOUNTING KIT FOR MANUAL BACKSTOP WINCH

Kit includes winch, mounting boards and hardware. Wall anchors should be specified and supplied by installer.

<b>Manual Winch w/ Wall Mounting Kit</b>	TW-700MKT1
--	------------



Manual Winch with Wood Kit



ED-902

<b>MANUAL WINCH DRILL OPERATOR</b>	ED-902
------------------------------------	--------

## POSILOK™ BACKSTOP SAFETY STRAP

Locks wall-mounted or ceiling suspended backstop in position should a failure or malfunction occur. Indicator to notify when the safety strap has been called into action. Safety belt capable of withstanding 7,300 lb load. Universal mounting allows easy installation for new or existing conditions.

PL-1000

## WALL MOUNTING KIT FOR BACKSTOP SAFETY STRAP

Kit includes safety strap, mounting boards and hardware. Wall anchors should be specified and supplied by installer.

PL-1000KT1



Safety Strap with Wood Kit



# HEIGHT ADJUSTERS

Height Adjuster – Adjust the height of your backboard and rim from 10 ft. to 8 ft. for youth play. Jaypro's Height Adjuster is stable and easy to operate. Constructed of slide steel frames, which provides tighter clearances resulting in less shake than other height adjusters on the market – even at lower playing heights. Choose either manual operation or electric.

## HEIGHT ADJUSTER STYLES

**Manual Height Adjuster - (SMHA)** Housing constructed of slide steel frames driven by a  $\frac{3}{4}$ " Acme thread rod that easily raises and lowers the backboard with a manual hand crank (HAHC). Height markings are embossed into the side of the adjuster every 6" to allow the operator to establish an accurate height. The manual height adjuster may also be controlled using a portable Cordless Drill operator (CD-80H), purchased separately, which is a popular option when retrofitting new height adjusters on existing backstops.

### **Electrically Operated Height Adjusters - (SEHA)**

Electrical height adjusters make raising and lowering the backboard as easy as turning a key, radio remote, pluggable power wand, or operating with a touchscreen. The electric height adjuster is powered by a thermally protected 1/10 HP motor, requiring 110-120 volt, single phase, 1.35 amp motor with a 4' pigtail. Electric height adjusters may be hard wired, or temporarily powered off a standard 120 volt electrical wall outlet. This height adjuster includes a redundant hard stop safety feature to catch the board and goal in the event of a failure.



Manual Height Adjuster



Electric Height Adjuster



Lowering the Backstop with a manual style crank attached to the bottom of the Height Adjuster.



Top photo: A Wall-Mounted Backstop with a Manual Height Adjuster with the position as an official height hoop.

Bottom photo: The same Backstop with the Height Adjuster used to lower the Backstop for youth play.



## HEIGHT ADJUSTER OPERATORS

**Manual Hand Crank**  
**Cordless Manual**  
**Power Wand**  
**Key Switch**  
**Easy Touch**  
**MEC PAD2**

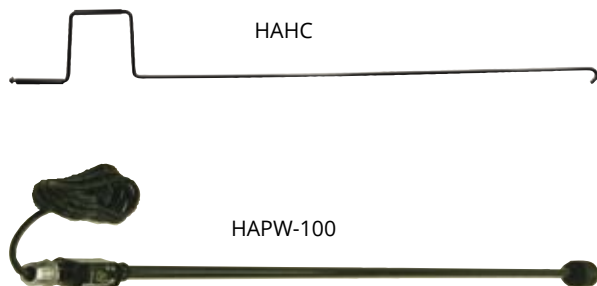
HAHC  
 CD-80H  
 HAPW-100  
 KS-13  
 ETEC  
 MEC2



CD-80H



ETEC



HAHC

HAPW-100



Key  
Switch



MEC2



# CONTROL SYSTEMS

## EASY TOUCH EQUIPMENT CONTROLLER (ETEC)

The ETEC control system is designed for large and small sports facilities that require the ultimate control of the retractable equipment. With a single push of a button, the operator can simultaneously raise multiple devices while lowering several others from the 10" touch screen. The ETEC control system is highly recommended for pay-to-play facilities where quick sport turnover is critical, allowing multiple basketball courts to be converted to volleyball courts in a few quick minutes.

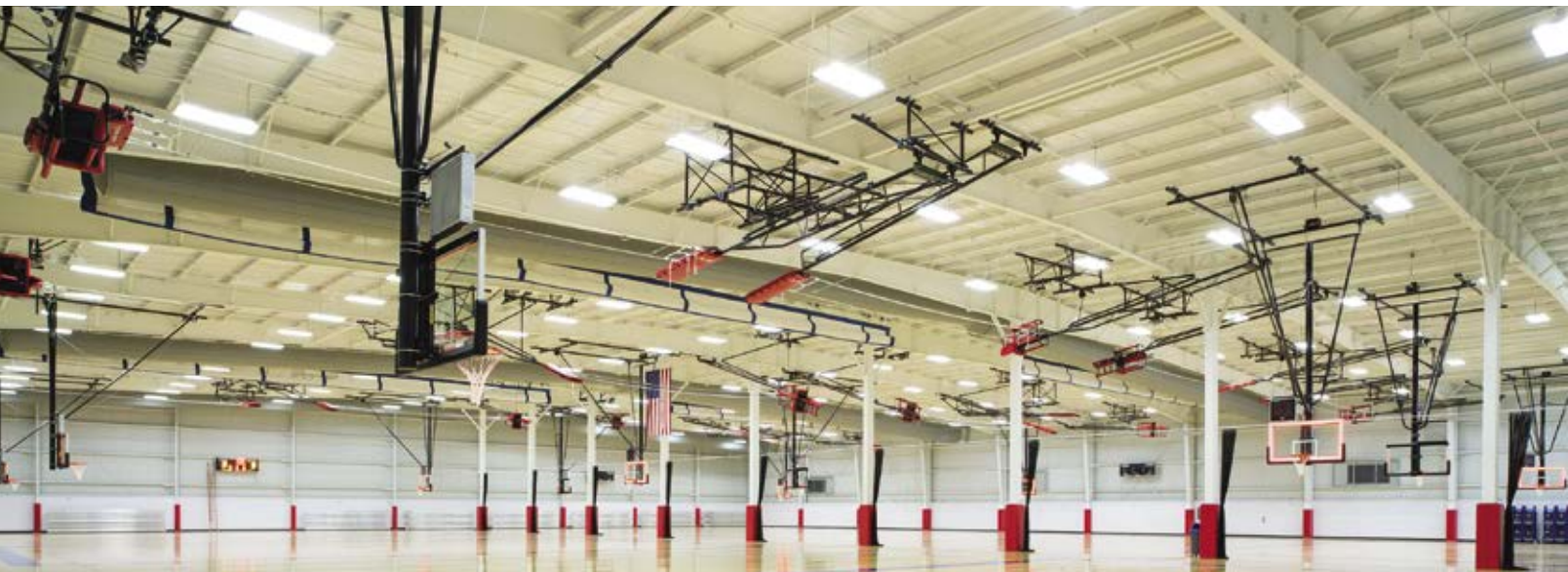
The ETEC touch screen is equipped with a lockable steel enclosure that can be surface mounted or flush mounted. The touch screen is housed behind a polycarbonate window to provide protection from unauthorized use or damage from errant balls.

The ETEC control system includes a custom designed graphical interface with your facility logos and colors. Pre-set programs can be saved within the control system if desired. However, the ETEC control system can be easily programmed on the fly to allow a fully customized configuration at each use. No confusing codes or programs to remember. Without a doubt, the ETEC control system will save numerous hours of set-up time, allowing for quicker turn-over and reduced overhead operator cost.

In addition to the lockable enclosure, the ETEC control system also includes multi-level password protection and tiered access control. To ensure the equipment operator has clear line of sight of the equipment, the touch screen requires constant contact on the touch screen during the operation of the equipment.

Simply the best control system in the industry with unparalleled benefits and features:

- Low voltage 10.4" high resolution LCD touchscreen
- Simultaneous up and down operation
- On-the-fly quick selection programming
- Customized facility layouts with intuitive graphical interface
- Instantly saves user programs with the press of a button
- Refer to the ETEC spec sheet for additional information



*Cape Girardeau SportsPlex, Cape Girardeau, MO*

*Jaypro Sports - Winner of the American Sports Builders Association award for Multi-Purpose Field House Facility of the Year (2017)*



Customize the touchscreen with your team spirit. Will operate all backstops, curtains, etc. at the same time.



"Intent" safety key pad requires constant touch control for system operations.



## MASTER EQUIPMENT CONTROLLER 2 (MEC2)

The MEC2 control system is similar to your touch screen smartphone, with a slick wall mounted touch screen that allows grouped operation of up to eight devices. The MEC2 includes intuitive menus to allow anyone to easily program at any point in time, without switches or removal of the screen. The MEC2 control system is ideal for grade schools or facilities with 6 or more retractable devices. Also, the MEC2 can also be easily retrofitted into existing facilities that may have an outdated numbered touch pad or existing key switches.

The MEC2 control system is intended on being flush mounted on the wall. If desired, the MEC2 can also be equipped with a clear, protective cover for an added level of protection.

The MEC2 control system has tiered access levels that can be easily programmed at any time to prevent unauthorized use. To ensure the equipment operator has clear line of sight of the equipment, the touch screen requires constant contact on the touch screen during the operation of the equipment.

Simply the leading economical control system in the industry:

- Low voltage 7" capacitive touchscreen
- Individual or grouped simultaneous operation
- Easily expandable with low cost expansion relay boards
- Protected with multiple tiered access logins
- Simple retrofit from existing methods of operation
- Direct replacement for MEC-99 control system
- Refer to the MEC2 spec sheet for additional information



MEC2 screen displays for your facility.



# BACKBOARDS



*Note: The glass itself is not unbreakable. Breakage in transit, during mounting, malicious acts, or deliberate attempts to damage are not covered under warranty. Boards used with height adjusters below 10' are not covered under warranty.*

## UNBREAKABLE RECTANGULAR GLASS BACKBOARD

½" thick tempered glass backboard designed for impact load on goal to transfer directly to a lower reinforced steel frame member without putting any stress on the glass. May be used with either direct mount (4" x 5" hole pattern) or 4 corner mounting applications. High strength clear anodized aluminum frame with border and target permanently fused into the face of the glass. Pre-drilled for Safe-Pro™ Edge Padding (MBBP-6). Indoor use only. NCAA and NFHS compliant.

**72" x 42" Backboard** GBRUB-42

**54" x 42" Backboard** GBRUB-54



## 42" RECTANGULAR GLASS CONVERSION BACKBOARD

½" thick tempered glass backboard easily converts fan-shaped backboards to rectangular backboard. Eliminates the need to alter either the playing court or backstop system. May be used with either direct mount (4" x 5" hole pattern) or 4 corner mounting (20" x 35") applications. High strength, clear anodized aluminum frame. Indoor use only. NCAA and NFHS compliant.

**72" x 42" Backboard** GCBB-35



## 48" RECTANGULAR GLASS BACKBOARD

Similar features to the Unbreakable Rectangular Glass Backboard (GBRUB), but with a direct mount (5" x 5" hole pattern) or 4 corner mounting applications. Indoor use only. NCAA and NFHS compliant.

**72" x 48" Backboard** GBAFR-48

# EDGE PADDING

## SAFE-PRO™ EDGE PADDING

Edge padding bolts easily to all 72" official glass backboards. Molded from color matched self-skinning urethane foam in a two-piece design. Inter-locking steel pin style connectors at the match point between the two halves provide alignment and eliminates sagging under the rim. NCAA, NFHS and FIBA compliant.

MBBP-6XX



Bolt-on edge padding includes two steel connectors for perfect alignment



# Safe-Pro™

EDGE PAD COLORS



Pink

Cardinal

Burnt Orange

Purple

Old Gold

Royal Blue

Scarlet Red

Navy Blue

Yellow

Forest Green

Orange

Maroon

Kelly Green

Black

Columbia Blue

Gray

Light Purple





### **REVOLUTION 180° BREAKAWAY GOAL**

Fully adjustable positive lock releasing goal is made to break in any direction when someone "slam dunks" the ball or hangs on the rim. Excellent rebound consistency with hideaway net attachment system. Fits 5" x 5" mounting hole pattern (GBA-180) or 5" x 4" mounting hole pattern (GBA-18042). Nylon net and mounting hardware included. NCAA, NFHS and FIBA compliant.

**42" Backboard**

GBA-18042

**48" Backboard**

GBA-180



### **REVOLUTION 180° FLEX GOAL**

Designed for premier facilities that experience the need for a higher performance goal. This goal flexes along a 180 degree plain to eliminate snap back that is associated with traditional breakaway goals. Tube-tie net attachment system with a 5" x 4" mounting hole pattern. Anti-whip net and mounting hardware included. NCAA and NFHS compliant.

**42" Backboard**

GBA-182

## CONTENDER SERIES



### CONTENDER PRO BREAKAWAY GOAL

(Tube-Tie Net Attachment)

Adjustable breakaway goal with excellent rebound consistency. Tube-tie net attachment system provides maximum player safety and a sleek look. Fits 5" x 5" or 5" x 4" mounting hole pattern (GBA-648) or a 5" x 4" mounting hole pattern (GBA-642). Anti-whip net and mounting hardware included. NCAA, NFHS and FIBA compliant.

**42" Backboard** GBA-642

**42" & 48" Backboard** GBA-648



### CONTENDER BREAKAWAY GOAL

(Traditional Net Attachment)

Adjustable breakaway goal with excellent rebound consistency. Traditional net attachment system. Fits 5" x 5" or 5" x 4" mounting hole pattern (GBA-548) or 5" x 4" mounting hole pattern (GBA-542). Anti-whip net and mounting hardware included. NCAA, NFHS and FIBA compliant.

**42" Backboard** GBA-542

**42" & 48" Backboard** GBA-548

## COMPETITOR SERIES



### COMPETITOR PRO BREAKAWAY GOAL

(Tube-Tie Net Attachment)

Breakaway system that releases at 180 lb. static load. Pro level tube-tie (steel tube) net attachment system. Fits 5" x 4" goal mounting pattern. Nylon net and mounting hardware included. NCAA and NFHS compliant.

**42" Backboard** GBA-600



### COMPETITOR BREAKAWAY GOAL

(Traditional Net Attachment)

Breakaway system that releases at 180 lb. static load. Traditional net attachment system. Fits 5" x 4" goal mounting pattern. Nylon net and mounting hardware included. NCAA and NFHS compliant.

**42" Backboard** GBA-342A



# VOLLEYBALL







The new wave of storage is UP!

Today's modern sports facilities are being asked to provide lots of sports programs in a limited space. A ceiling suspended system can give facilities managers or athletic directors the ability to configure the facility to fit the sport being played.

Just like ceiling suspended basketball systems, Volleyball systems can be installed to be stowed in the ceiling. The system stores fully assembled and is raised and lowered using a winch and a turnkey solution for quick set-up. A time and space saver, all in one.

Jaypro Sports offers a wide variety of Volleyball standards available in Aluminum, Steel or Carbon suitable for any level of play: International, Collegiate, High School, Intramural or Recreational.

Ceiling suspended or installed using floor sleeves, Jaypro Sports has the Volleyball system you need to spike the ball.



# CEILING SUSPENDED VOLLEYBALL



Save on external storage and set-up time with a Ceiling Suspended Volleyball System by Jaypro Sports. This system stores fully assembled and close to the ceiling, is raised and lowered using a 1 HP winch, and is offered with or without an attached referee stand. Additionally, the net height is infinitely adjustable to meet both men's and women's regulation heights.

## CEILING SUSPENDED VOLLEYBALL SYSTEM

Adjustable ceiling suspended system conveniently raises and lowers with a turn-key solution for quick set-up.

Features include: engraved height markers (0-20" range), net height adjustment handles on the uprights, collegiate net and antennas, and all exposed posts and frames are fully padded. Available with or without referee stand.

System raises to fold in either direction. Specify fold direction when ordering. Dual Posilok™ safety straps automatically lock system in position should a malfunction occur during raising or lowering of unit.

**System with Referee Stand**

PVBOH-880R

**System without Referee Stand**

PVBOH-800

Electric winch designed specifically for use on overhead volleyball system positioning applications. Utilizes a specially designed torque motor for increased line pull and motor reliability. Call Jaypro for additional information.

SBBW-4











*jaypro sports*

For more information,  
scan below or go to:  
[www.Jaypro.com/Volleyball](http://www.Jaypro.com/Volleyball)



## ALUMINUM ADJUSTABLE SYSTEMS



### **POWER**Lite™

**(PVB-7000)** Infinitely adjustable all aluminum upright volleyball system designed for international, collegiate and advanced high school level play. This lightweight design makes it easy to move around the gym and is very easy to set-up. NCAA, NFHS and USVBA compliant.

Available as complete system (uprights with winch, net, padding and antenna), uprights only or center system (convert a single court to a two court set-up).

## ALUMINUM PIN-STOP SYSTEMS



### **FEATHER**Lite™

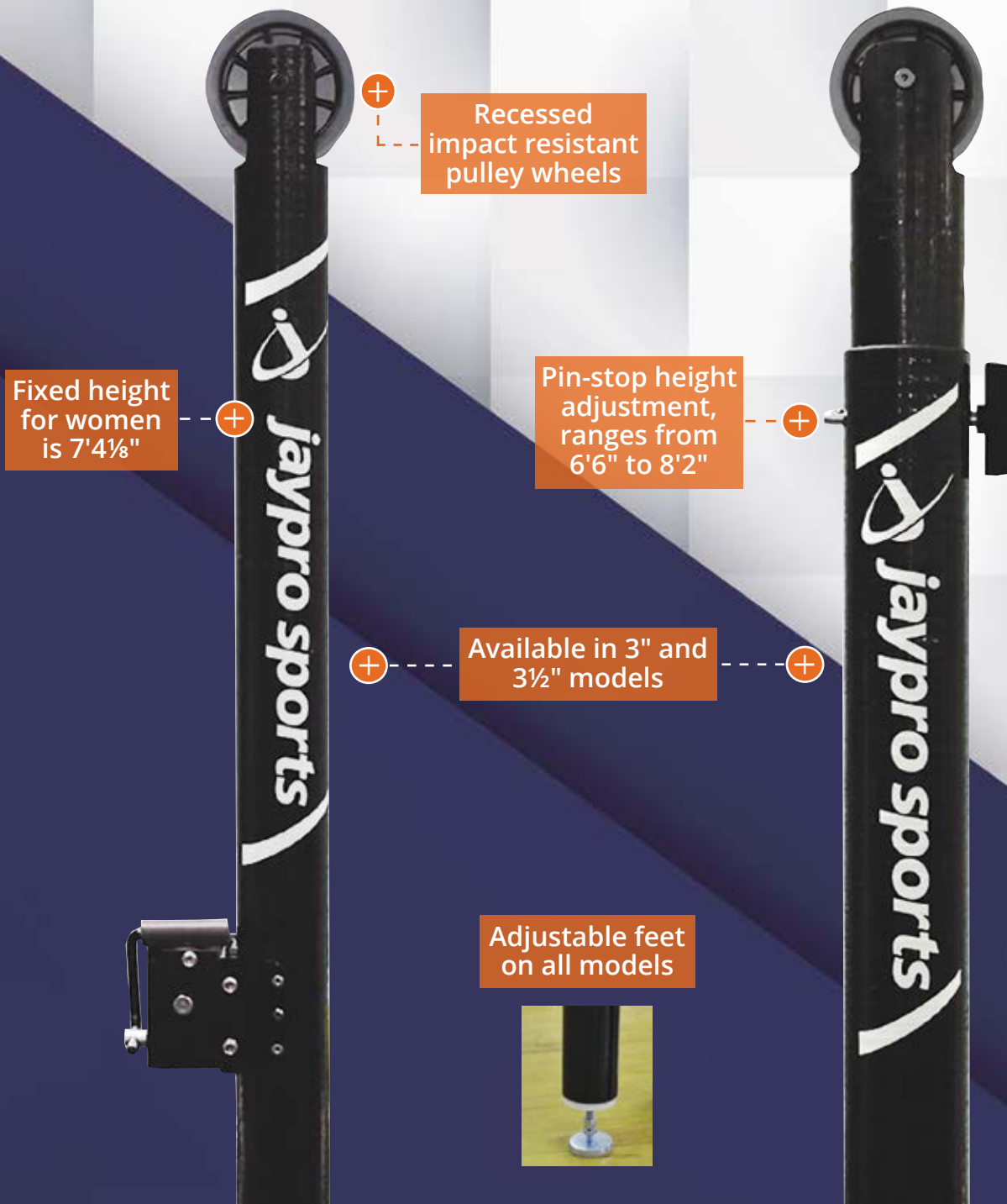
**(PVB-5000)** Most affordable high performance, all aluminum uprights with a 16 pin-stop height adjustment range makes this adjustable system perfect for collegiate and high school level play. NCAA, NFHS and USVBA compliant.

Available as complete system (uprights with winch, net, padding and antenna), uprights only or center system (convert a single court to a two court set-up).



## LADYPRO CARBON™

## CARBON ULTRALITE™



Significantly lightweight volleyball systems with the rigidity of steel. Fabricated from state-of-the-art carbon composite material. The ease of lifting these 19 lb. uprights will help with the set-up ease of the carbon system. Our Ladypro (**PVB-8000**) system is fixed at the women's height, and our Ultralite (**PVB-9000**) system telescopes from intramurals to men's height. NCAA, NFHS and USVBA compliant.

Available as complete system (uprights with winch, net, padding and antenna), uprights only or center system (convert a single court to a two court set-up).

## HYBRID STEEL SYSTEMS



### Hybrid Steel Systems

**(PVB-1500)** Designed for all levels of play. Uprights have steel bottoms for strength and aluminum tops for lightness! The 3½" black upright and the 3" Red upright each have a 16 pin-stop height adjustment range. NCAA, NFHS and USVBA compliant.

Available as complete system (uprights with winch, net, padding and antenna), uprights only or center system (convert a single court to a two court set-up).

## MULTI-PURPOSE SYSTEMS



### Multi-Purpose Systems

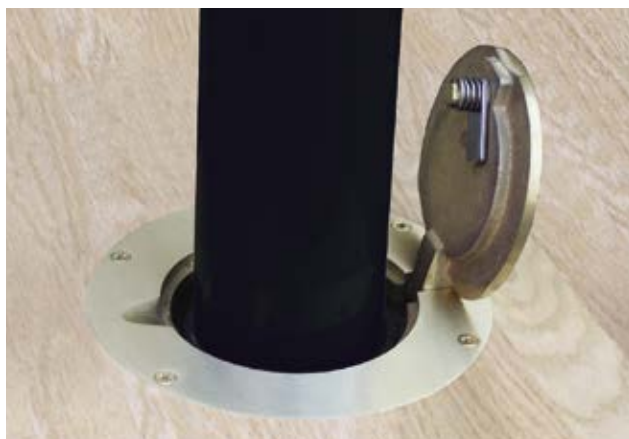
**(PVB-1350)** Lightweight, adjustable net system for high school, intramural and recreational play. Anodized aluminum uprights with infinite height adjustment sliding collars.

Available as complete system (uprights with winch, net, padding and antenna), uprights only or center system (convert a single court to a two court set-up).



# FLOOR SLEEVES & COVERS

Unique locking feature which is tamper resistant. Hinge feature allows easy installation. Heavy-duty cast brass or chrome finish design. 7½" or 8½" outside diameter lockable hinged cover plates with spring loaded latch that prevents basketball dead spots. Available in 3½", 3", and 2¾" models (10" deep).



## COVER PLATES & SLEEVES

<b>Brass 3½"</b>	PVB-75S
<b>Chrome 3½"</b>	PVB-75S-CP
<b>Brass 3"</b>	PVB-70S
<b>Chrome 3"</b>	PVB-70S-CP
<b>Brass 2¾"</b>	BSO-2G
<b>Chrome 2¾"</b>	BSO-2G-CP

## COVER PLATES

<b>Brass 7½"</b>	PVB-711
<b>Chrome 7½"</b>	PVB-75-CVR-CP
<b>Brass 8½"</b>	PVB-85CVR

Chrome Finish



Brass Finish



## SLEEVE INSERT/ADAPTER

Makes larger floor sleeve holes smaller.

*Call customer service before ordering.  
Custom sizes are not returnable.*

### Depth Reducer

**Modifies 3" to 2¾" ID**

**Modifies 3½" to 3" ID**

**Modifies 3½" to 2¾" ID**

**Modifies 3¾" to 3½" ID**

**Modifies 4" to 3½" ID**

*Inside Diameter (ID)*

PVB-DEP

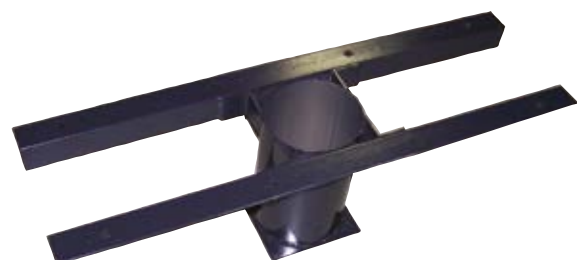
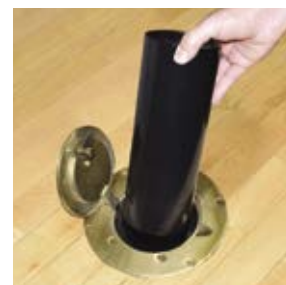
SVL-3238

PVB-ID

SVL-3528

SVL-37835

SVL-4035



## SECOND FLOOR SLEEVE BRACKET

Designed for second story installation of floor sleeves or where there is less than 12" clearance in the sub-floor. Mounting hardware included. Custom designs available.

SB-10



## FLOOR ANCHOR (1 1/4" CYLINDER)

For systems with "T" style or round bases that anchor to the floor. 3 3/4" chrome cover with 1 1/4" wide cylinder. Billet steel body gives 9000 lb. pullout strength. 1/2" center - 13 thread with spring loaded closure plug. Includes removable cylinder in case stripping occurs.

*Designed for all floor applications except floating wood floors. May be used without extension bolt on wood, tile, or synthetic surfaces applied directly over concrete slab or on a floating wood floor for light-duty performance.*

FP-89



## FLOOR ANCHOR (1 1/4" CYLINDER)

For systems with "T" style or round bases that anchor to the floor. 1 1/4" wide cylinder. Billet steel body gives 9000 lb. pullout strength. 1/2" center - 13 thread with spring loaded closure plug. Includes removable cylinder in case stripping occurs.

*Designed for all floor applications except floating wood floors. May be used without extension bolt on wood, tile, or synthetic surfaces applied directly over concrete slab or on a floating wood floor for light-duty performance.*

FP-90



## FLOATING WOOD FLOOR ANCHOR (1 1/4" CYLINDER)

Brass cover plate and anchor work independently to allow for installation into floating wood floors. 3 3/4" brass cover with 1 1/4" wide cylinder. Billet steel body gives 9000 lb. pullout strength. 1/2" center - 13 thread with spring loaded closure plug. Includes removable cylinder in case stripping occurs.

FP-100

## UPRIGHT PADDING

Protect players from injury during play.

- Meets competitive play specifications and fits all volleyball system uprights
- 6'H x 2" thick foam wrapped in 14 oz. vinyl (Choose from 14 colors)
- Hook-and-loop closure flaps
- Custom graphics sold separately

*Specify pad color when ordering.*

PVB-60P

**VINYL PAD COLORS:** *Specify pad color when ordering*



## CUSTOM GRAPHICS FOR UPRIGHT PADS

Bring us your artwork and we will design custom pads to keep a look of professionalism and individuality, PLUS protect your players!

*Custom graphics are on both sides of each pad. Contact customer service for artwork requirements and pricing.*

**Multi-Color**

JSG-VPP





# DIVIDER CURTAINS





Jaypro Sports offers a variety of attractive customizable curtains to divide any sports facility or institutional space. Available in solid vinyl or vinyl coated mesh with several color options that can be customized with the team/facilities logo.

Divider Curtains increase safety providing soft barriers for players while offering better containment for sports play. Today's modern facilities are hosting multiple teams and programs at the same time. The use of a divider curtain provides an easy way to keep each program separate from the others.

Available in motorized or manual operation, divider curtains can be used in a variety of ways including perimeter containment and separating the playing field for sports play.

Safety netting systems are designed to protect spectators or create safe passageways outside the field of play.

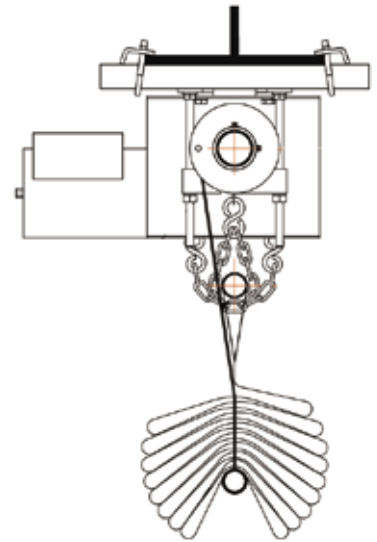
Jaypro Sports can create a safe, customizable, attractive divider system for your facility.



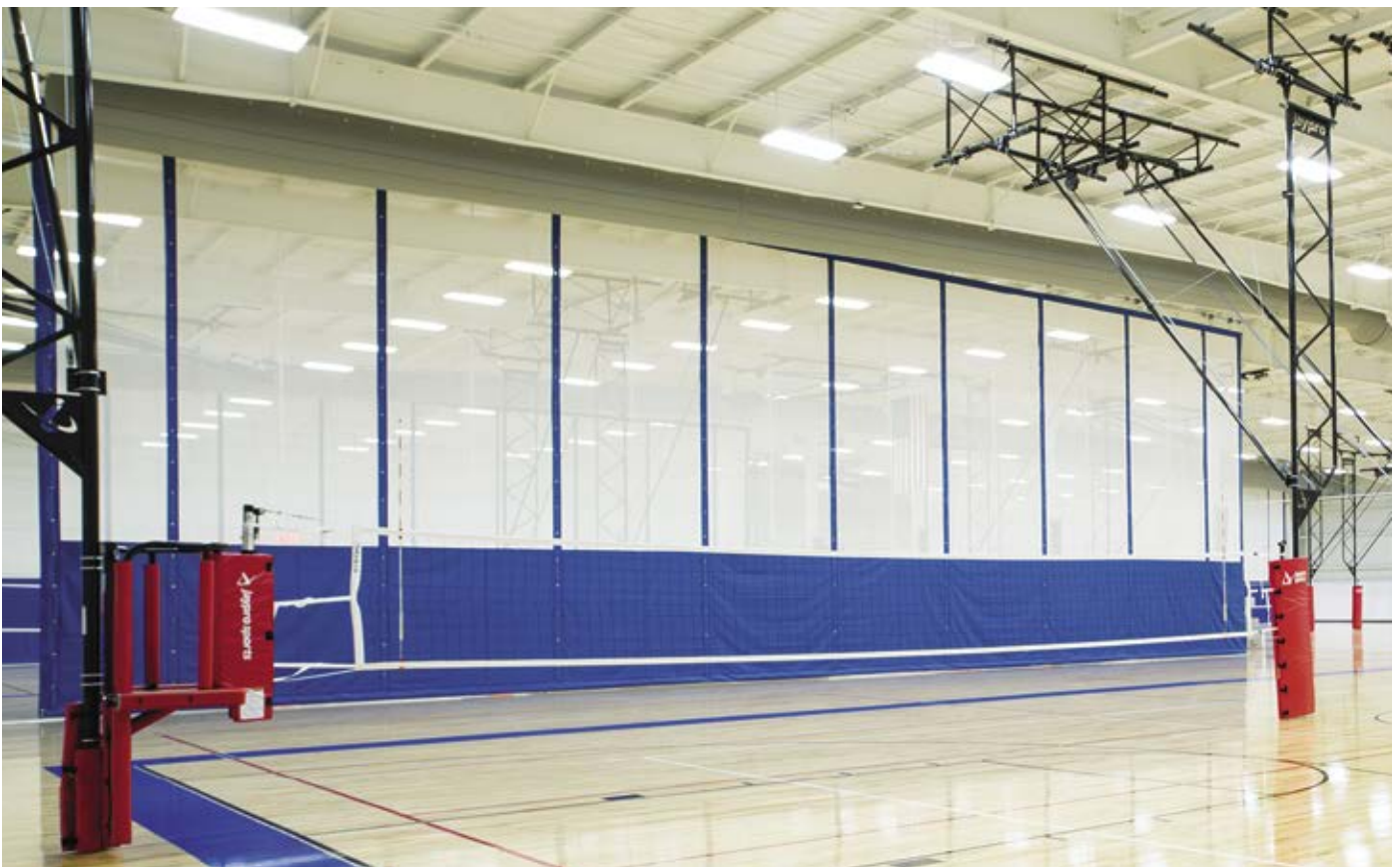
# GYM DIVIDER CURTAINS

## FOLD UP CURTAIN (FC-680)

The most versatile, robust and long lasting curtain in the industry. This curtain uses hoist cables which are weaved through grommets and are attached to the bottom batten. One of the easiest retractable curtains to install. Hoist cables simply roll on the driveline, causing the curtain to fold neatly towards the ceiling in an accordion style fashion. The compact fold will maximize clear height.



Visit [JAYPRO.COM](http://JAYPRO.COM) for product specifications



## SLOPE FOLD CURTAIN (SC-685)

Engineered to fit against the roof frame and conform to virtually any slope while providing maximum clearance for all sporting activities. Curtain shall fold to one side only of the curtain centerline. Visit [Jaypro.com](http://Jaypro.com) for product specifications.



Lowered Position



Raised Position



## FIELD HOUSE SLOPE FOLD CURTAIN (SC-685XL)

Engineered to fit against the roof frame and conform to virtually any slope while providing maximum clearance for all sporting activities. This mega curtain utilizes dual synchronized winches with a low voltage controller. This curtain can conform to virtually any roof to maximize clearance for all sporting events. Pictured below, this SC-685XL curtain measures 190' long and 42' high at the peak and raises to the ceiling in 75 seconds.

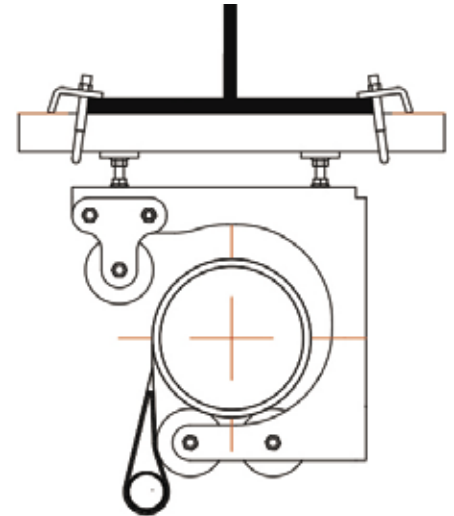


**Visit [JAYPRO.COM](http://JAYPRO.COM) for product specifications**



## TOP ROLL CURTAIN (TC-701)

Uses no hoist cables or straps to raise and lower the curtain and stores tighter than many other curtain designs for additional clearance with low ceilings. When operated, the entire fabric rolls onto the drive pipe.

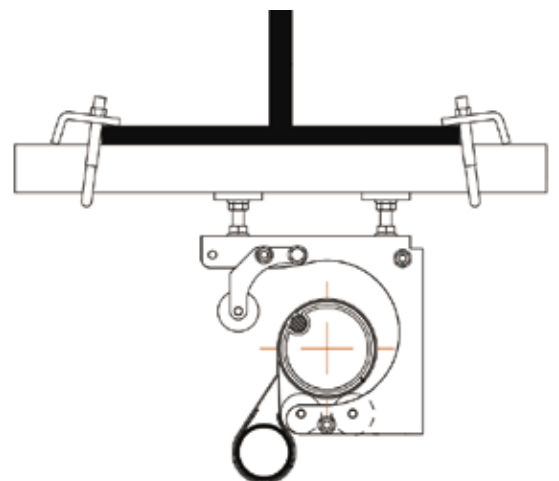


Electric winch designed specifically for use on divider curtains. Utilizes a specially designed torque motor for increased line pull and motor reliability. Call Jaypro for additional information.

SBCW-3

## MINI TOP ROLL CURTAIN (TC-710)

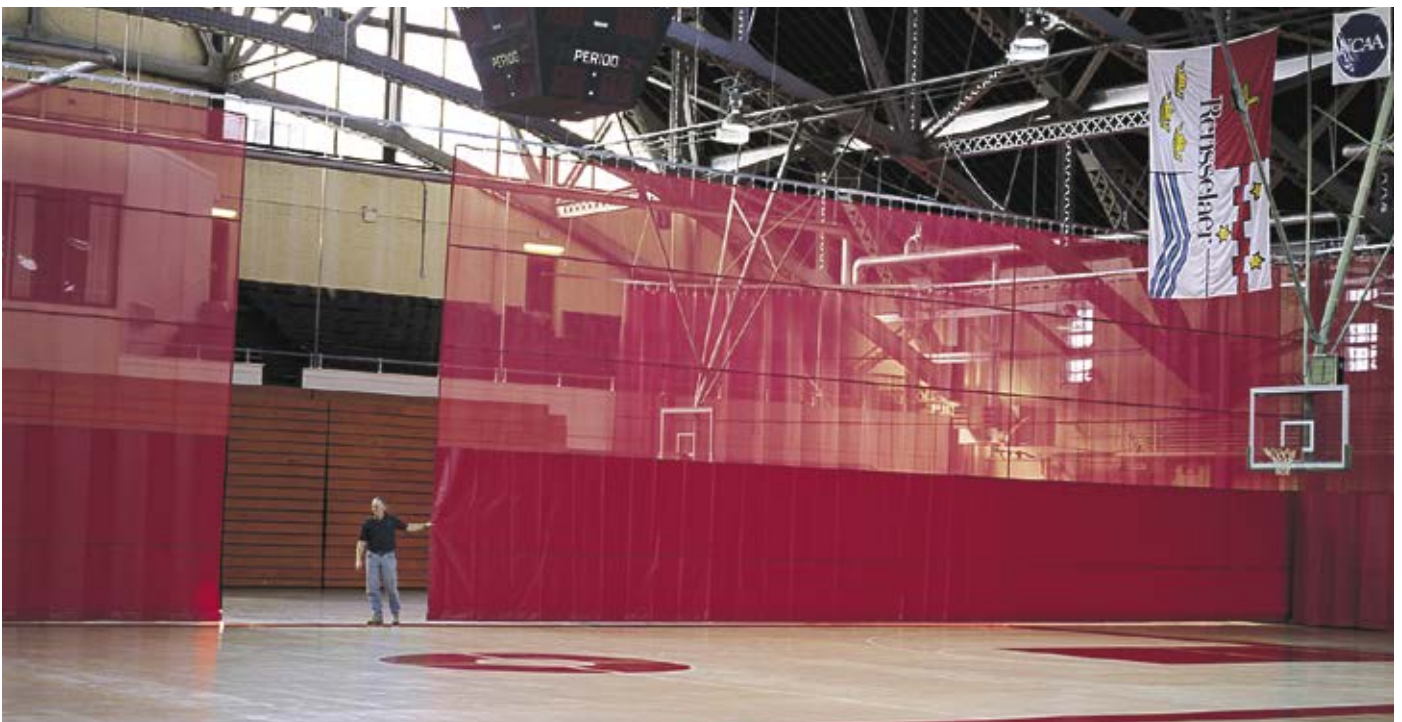
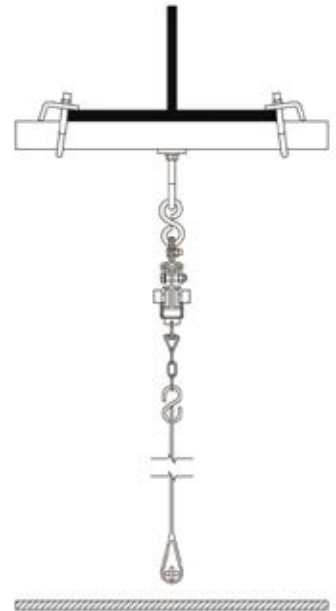
Compact curtain system designed to store tight to the ceiling structure by means of an internal tubular motor. Ideal for cafeterias, meeting rooms, stages, or other small spaces.





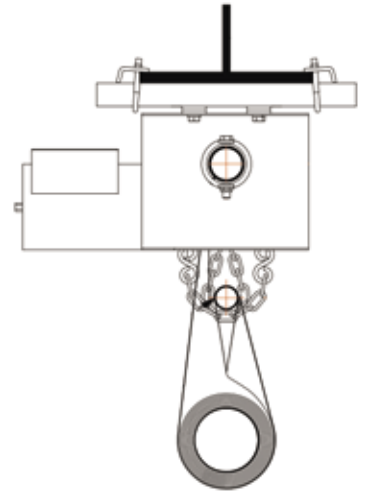
## WALK DRAW CURTAIN (WC-660)

Designed for manual operation, this curtain is moved by pulling it along a ceiling suspended track to store along a perimeter wall. Re-purpose any open area, Lunch rooms, Meeting areas, Auditoriums and yes, even Gymnasiums.



## ROLL UP CURTAIN (RC-690)

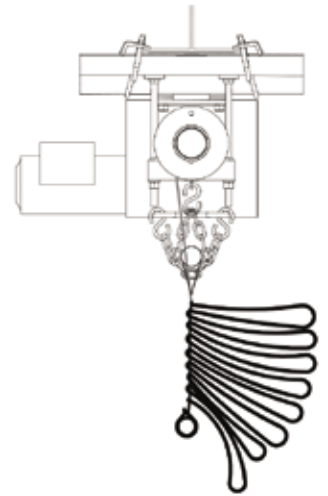
Raised and lowered by heavy-duty hoist belts and stores in a 2' storage space close to the building structure. When operated, hoist belts roll the fabric onto the bottom batten.





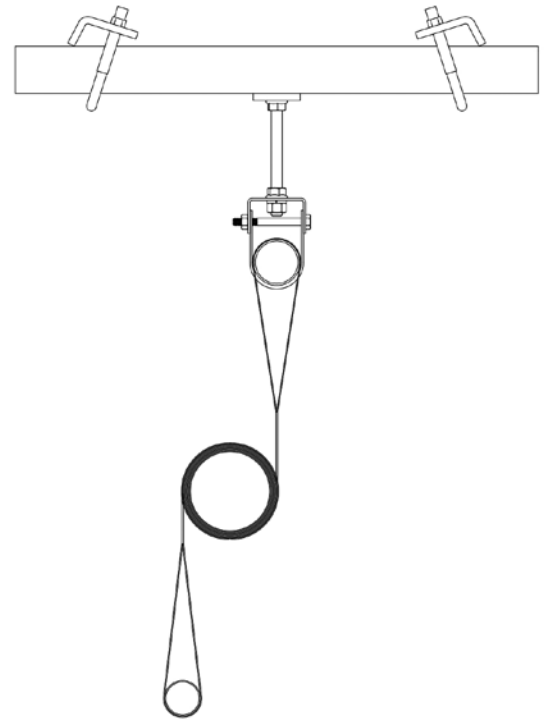
## PERIMETER FOLD UP CURTAIN (FC-680P)

Jaypro Perimeter Curtains are ideal for completely following the inside or outside perimeter of running tracks within multi-use facilities and field houses. These curtains are designed to separate the running track from interior basketball or volleyball courts, thereby maximizing facility use and flexibility. Adjoining curtains are overlapped and offset to allow for easy egress.



## CENTER DRIVE CURTAIN (CDC-800)

Ceiling suspended center drive divider curtain is available in solid vinyl lower with mesh upper or all solid vinyl or all mesh. The top and bottom panels roll into the center of the curtain. This design allows the center roll up curtain to stow twice as fast as full suspended curtains. The curtain rolls into a small round tube that stows away for maximum clearance.



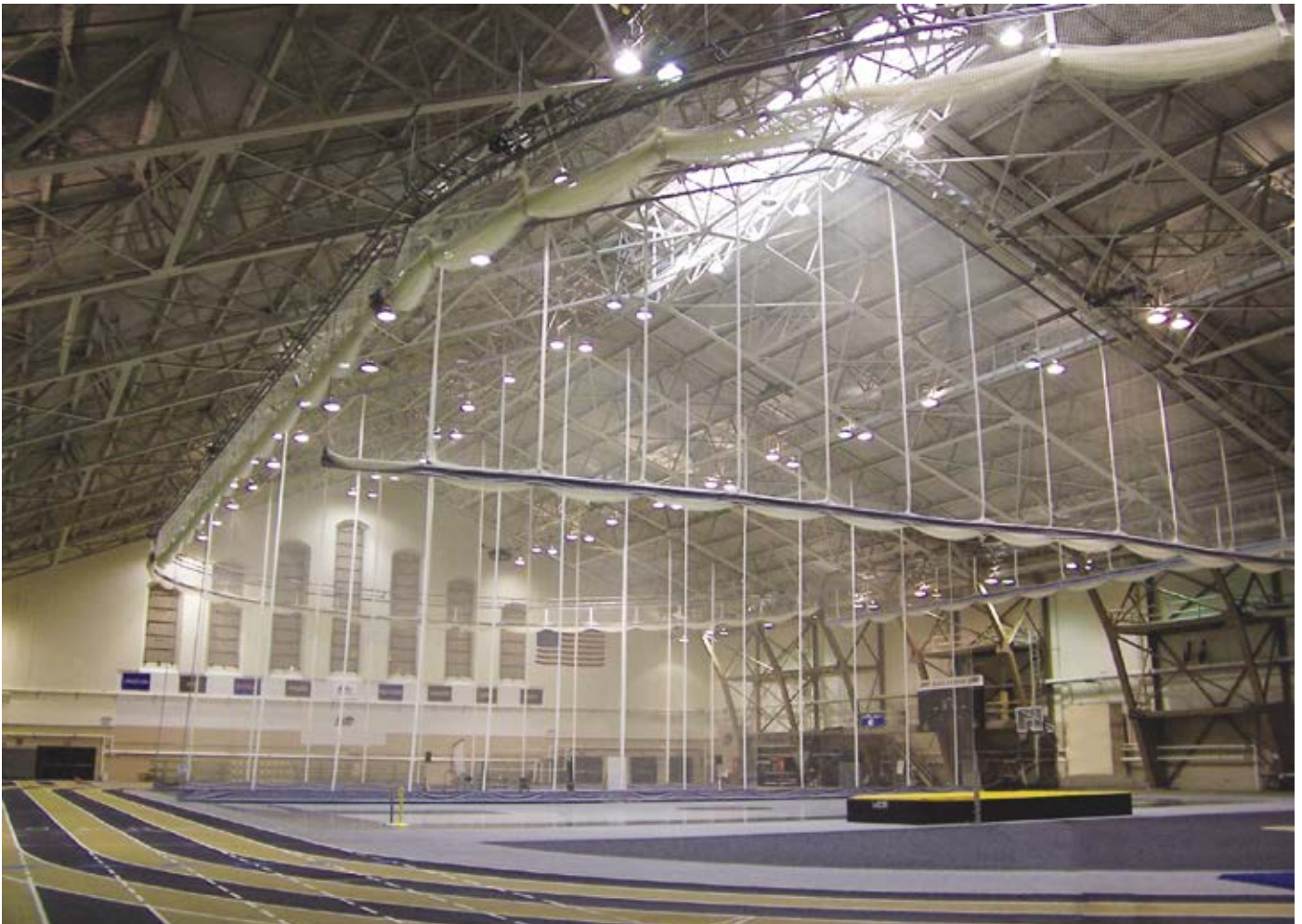
Visit [JAYPRO.COM](http://JAYPRO.COM) for product specifications



# FACILITY NETTING

## MOTORIZED NETTING

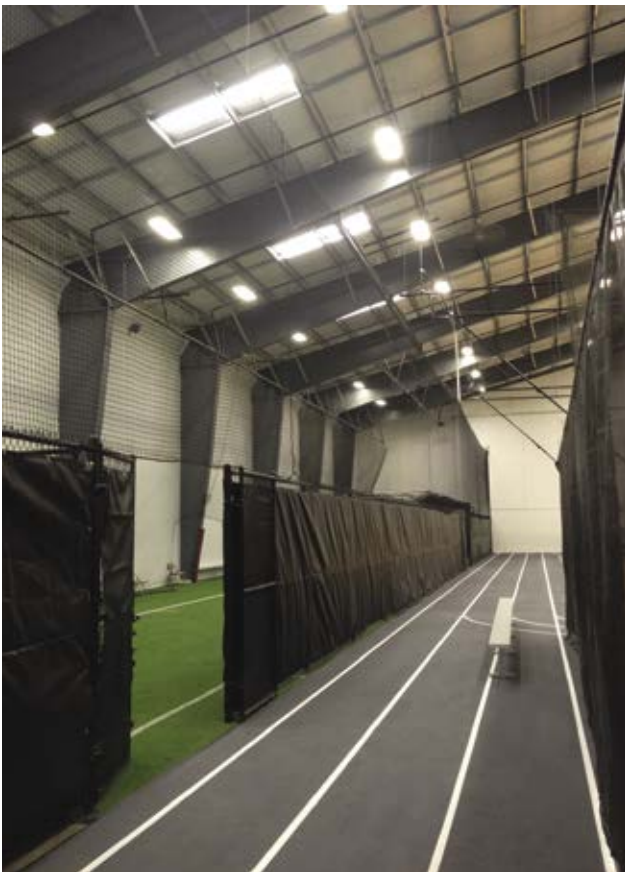
Safety netting systems are designed to protect spectators or create safe passageways outside the field of play. A complete surround netting system can be used to seal off a court or field for ball containment. Netting can enclose the perimeter of a facility as well as create a ceiling. Netting systems can be motorized or stationary. Contact Jaypro's estimating department to help design a solution for your netting needs.





## PROTECTIVE STATIONARY NETTING

Jaypro makes nets to separate outdoor athletic fields in large complexes and to divide indoor athletic facilities. We also provide complete perimeter and ceiling netting protection for your athletic facility. Our netting is found on tennis courts, basketball courts, soccer fields, and golf courses. Everything we make is customized to your needs as no two facilities are alike. Call or e-mail us to discuss your project.





# INDOOR CAGES



## CEILING SUSPENDED RETRACTABLE BATTING CAGES

Robust indoor batting cage (70'L x 12'W x 11'H) is raised/lowered from ceiling by an electric winch controlled drive shaft. Constructed of 2" heavy-walled aluminum tubing. Tunnel net included. Ceiling mounting kit sold separately.

*14' wide cages and custom sizes available.*

**Baseball** - 1 $\frac{3}{4}$ " mesh      BBC-700B

**Multi Sport** -  $\frac{3}{4}$ " mesh      BBC-700M





## **BOTTOM PULL RETRACTABLE BATTING CAGE (BBC-703)**

Similar to the BBC-700, but eliminates the need to manually lift the net up onto the frame after each use, as well as retrieve it off the frame before use. The BBC-703 design makes setting up a ceiling suspended batting or multi-sport cage automatic. Includes an additional bottom frame that collects the net as it raises, then gradually lets it out as its lowered.

Standard cage is 70'L x 12'W x 11'H, but other sizes are available.

## **DOUBLE PULL RETRACTABLE BATTING CAGE**

For facilities with low ceilings, the double pull batting cages are similar to the standard BBC-700 batting cages but retract to the ceiling with dual hoist cables at each frame strut, rather than one. This allows the hoist cables to stabilize the cage and retract to the ceiling an additional 18-24". The double pull batting cages utilize directional pulleys on one side of the cage and a direct drive pipe on the other and is ideal for flat roof applications.

**70'L x 12'W x 11'H** - 1¾" netting      BBC-702

**70'L x 14'W x 11'H** - 1¾" netting      BBC-802



## **CEILING SUSPENDED RETRACTABLE THROWING CAGE**

Nets can be mounted to a retractable frame or extend the full ceiling height. Net configuration may be straight or U-shaped to meet USTF, NCAA, and NFHS requirements.

Cage easily raises and lowers from ceiling via electric winch(s).



# WINCHES & SAFETY STRAPS

## STANDARD DUTY CURTAIN & BATTING CAGE WINCH

Designed to raise and lower divider curtains with a 2 $\frac{3}{8}$ " OD drive pipe. This winch is ideal for standard size divider curtains or batting cages often seen in grade schools, churches, and community centers. Universal mounting allows easy installation for new or existing conditions. Should a malfunction occur, the Integral Posilok™ over-speed safety lock will lock the curtain into position. Maintenance-free operation with no belts or chains to replace. Various methods of operation are available to choose from.



**Only winch in the Industry  
with built in drive safety  
curtain lock!**

CW-1800

1 HP MOTOR

**1,800 IN-LBS OF TORQUE**

**10 REVOLUTIONS PER MINUTE**

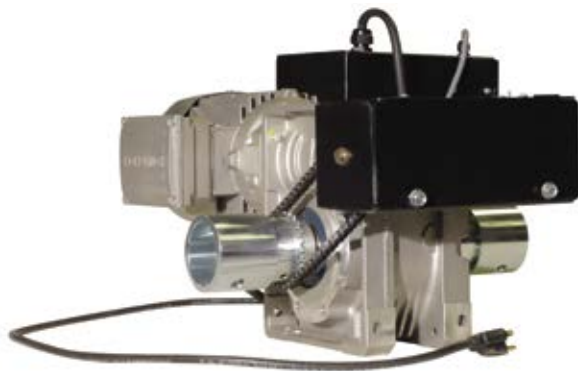
**FEATURES INTEGRAL POSILOK CURTAIN ARREST MECHANISM**

CONTROL VOLTAGE: 120V

POWER REQUIREMENT: 120V / 1PH / 60Hz

## HIGH SPEED / HEAVY-DUTY CURTAIN & BATTING CAGE WINCHES

Designed to raise and lower divider curtains and batting cages with a 2 $\frac{3}{8}$ " OD drive pipe. These winches are ideal for larger divider curtains or batting cages which require the additional torque requirement, or for facilities that rely on quicker turn-over. The preferred winches for larger pay-to-play facilities, field houses, universities, and arenas. These winches include a variable frequency drive, allowing for smooth operation with safer, low voltage control by the end-user. Smoothest, quietest, and fastest winches in the industry! Various methods of operation are available to choose from.



TW-2100

1 HP MOTOR

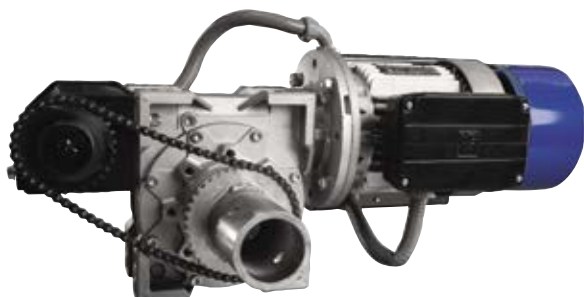
**2,100 IN-LBS OF TORQUE**

**17.2 REVOLUTIONS PER MINUTE**

CONTROL VOLTAGE: 24 VDC

POWER REQUIREMENTS: 120V / 1PH / 60Hz

240V / 1PH / 60Hz



TW-2400

1.8 HP MOTOR

**2,400 IN-LBS OF TORQUE**

**21 REVOLUTIONS PER MINUTE**

CONTROL VOLTAGE: 24 VDC

POWER REQUIREMENTS: 120V / 1PH / 60Hz

240V / 1PH / 60Hz

240V / 3PH / 60Hz

## CURTAIN & BATTING CAGE SAFETY LOCK



Designed to catch a 2 $\frac{3}{8}$ " OD drive shaft should a failure occur with the drive mechanism. Failure is defined as a free-spinning drive shaft caused by a failure with the winch or the winch-to-drive pipe connection. Easily retrofittable onto existing curtains with a 2 $\frac{3}{8}$ " drive pipe.

**NOTE:** Not required for curtains or batting cages equipped with the CW-1800 winch. The CW-1800 winch is equipped with Integral Posilok™ over-speed safety lock.

CL-1000

## METHODS OF OPERATION

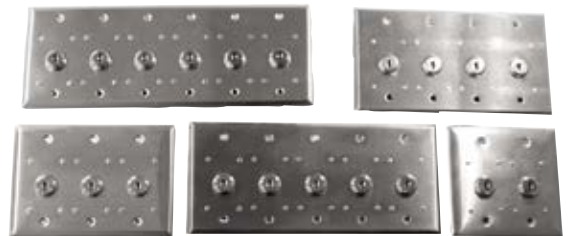
### Key Switch

KS-13

Key Switch



Ganged Key Switches



### Ganged Key Switches

GPWKS-XX

### Radio Remote Receiver

DRX-1199

Radio Remote Receiver



Radio Remote Transmitter



### Radio Remote Transmitter

TMX-1199

### Master Equipment Controller 2

MEC2

Master Equipment Controller 2



Easy Touch Equipment Controller



See pages 14-15 for additional control system details.



# GYMNASIUM EQUIPMENT



Backstop  
Safety Str

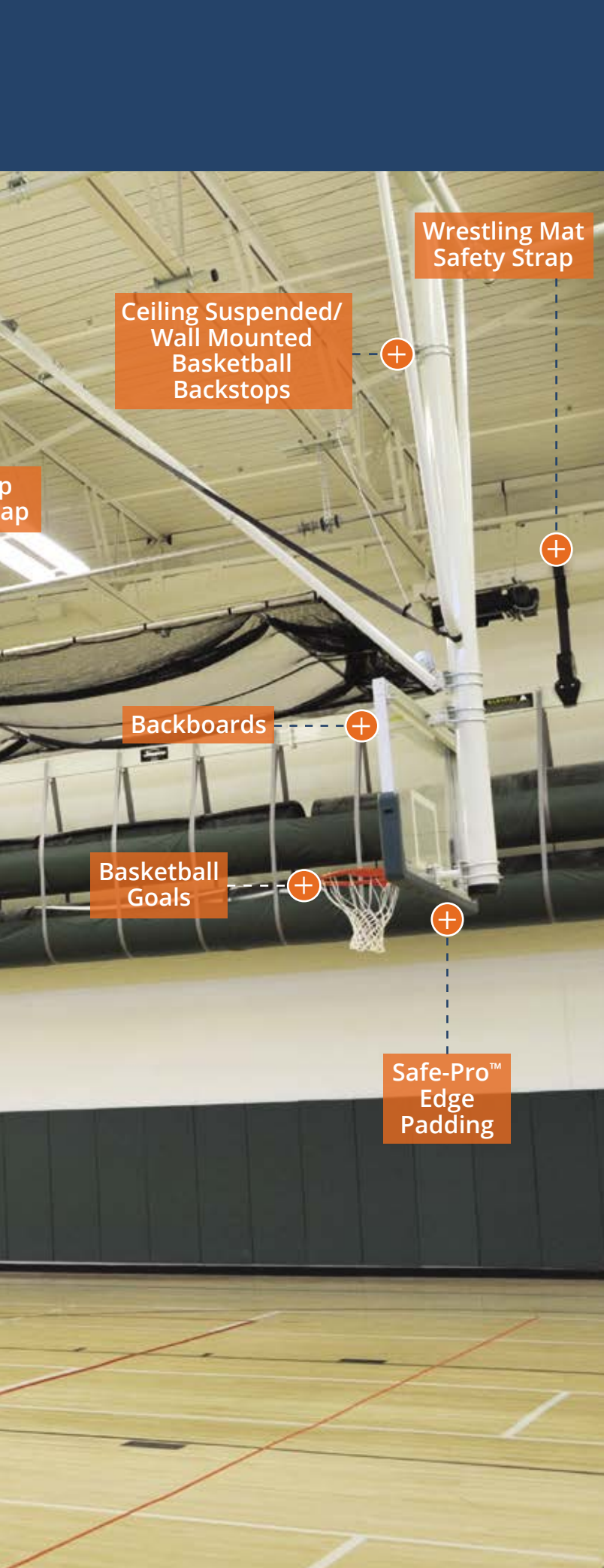
Ceiling Suspended  
Retractable  
Batting Cage

Wrestling Mat  
Storage System

Scoreboards

WallGuard  
Wall Padding





Jaypro Sports has been supplying recreational and professional style sports equipment for more than 60 years. We have had our specialty sports apparatus installed around the world and we can help you with your sports facilities needs.

We take great pride in providing manufactured products that will last long, operate smoothly to give you years of trouble free use.

Architects, General Contractors, Athletic Directors continue to use Jaypro Sports products knowing that they are getting professional level quality at a great price.

Our Engineering department can assist in the design, installation, and service all of your installed Jaypro equipment. With upgraded design software and qualified designers, we are able to turn around jobs quickly and accurately. Here at Jaypro, we design to perform and manufacture to last.



# WRESTLING MAT STORAGE SYSTEMS

## SECURELIFT™ WRESTLING MAT STORAGE SYSTEMS

Eliminate risk of injury to students, athletes and coaches from manual lifting and transporting of heavy and awkward mats. Gain valuable storage space and extend the life of your wrestling mats. Simply roll the mat(s) onto the sling, attach the sling to the load bar, turn the key to raise the unit and store at ceiling height.

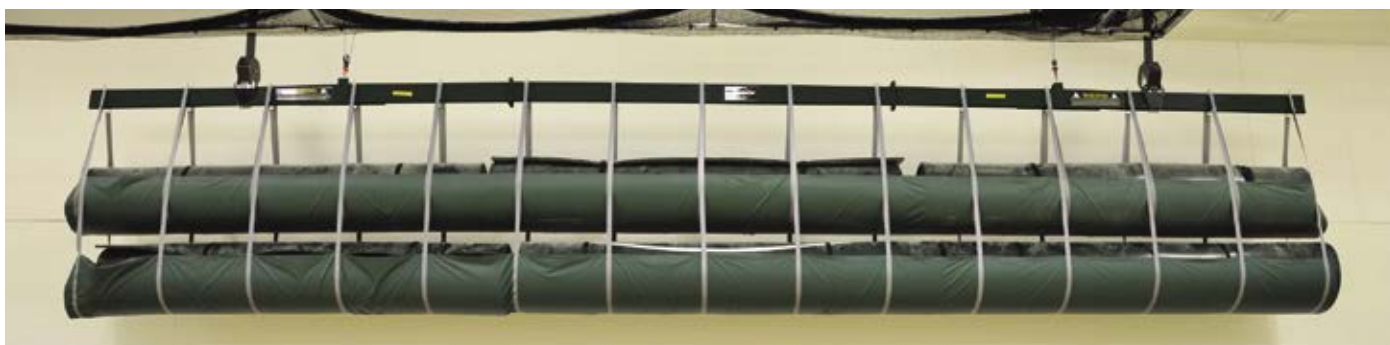


**Ceiling Suspended Single Mat Securelift™**

MH-S-A

**Wall-Mounted Single Mat Securelift™**

MHWM-S-A



**Ceiling Suspended Double Mat Securelift™**

MH-D-A

**Wall-Mounted Double Mat Securelift™**

MHWM-D-A

## MATLOK™

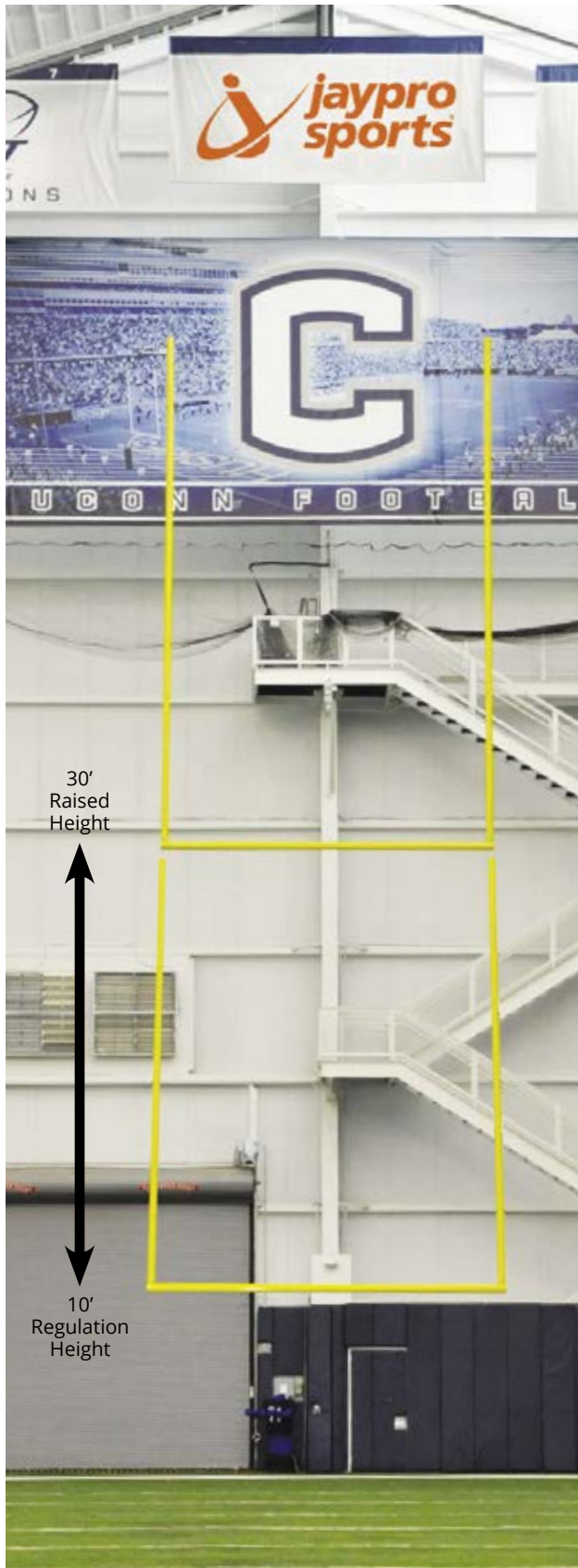
### MATLOK™ WRESTLING MAT STORAGE SYSTEM SAFETY STRAP

Safety strap designed to automatically lock a mat hoist system in position should a malfunction occur. Has self-checking, self-leveling, fail safe mechanism features. The system is comprised of 2 load bar rocker assemblies and 4 Posilok™ Safety Straps. Safety strap is adaptable to any wrestling mat storage system. Versatile mounting clamps are included.

MH-MLS



# CEILING SUSPENDED FOOTBALL GOAL POST



## RETRACTABLE MOTORIZED CEILING SUSPENDED FOOTBALL GOAL POST

Lightweight aluminum goal suspends directly beneath building structure and lowers/raises via 1 HP electric hoist system. Great solution for indoor practice facilities! 6 $\frac{5}{8}$ " crossbar is official collegiate size at 18' 6" wide. 4" uprights available in 20' (1-piece design) or 30' (2-piece design) heights. Crossbar leveling feature and suspension hardware included.

*White or Yellow powder coat options. Specify post color when ordering.*

**30' Uprights** CSGP-2XX

**20' Uprights** CSGP-4XX

## STATIONARY CEILING SUSPENDED FOOTBALL GOAL POST

Lightweight aluminum goal suspends directly beneath building structure. Great solution for indoor practice facilities! 6 $\frac{5}{8}$ " crossbar is official collegiate size at 18' 6" wide. 4" uprights available in 20' (1-piece design) or 30' (2-piece design) heights. Crossbar leveling feature and suspension hardware included.

*White or Yellow powder coat options. Specify post color when ordering.*

**30' Uprights** CSGP-1XX

**20' Uprights** CSGP-3XX



# WALL PADDING



**WallGUARD™**

Impact Wall Padding

## IMPACT WALL PADDING

2" thick high impact foam with  $\frac{7}{16}$ " Oriented Strand Board backing. Covered with 14 oz. fire-retardant vinyl in a variety of colors (see next page). This pad exceeds impact standards as defined in ASTM F2440-04.

Item #	Size	Description
JWP-I-26	2' x 6'	lip top & bottom
JWP-I-26Z	2' x 6'	z-clip top & lip bottom
JWP-I-26ZZ	2' x 6'	z-clip top & bottom



**WallGUARD™**

Fire Wall Padding

## FIRE WALL PADDING

Class A wall padding for areas where impact is less likely. 2" thick fire retardant foam with  $\frac{7}{16}$ " Oriented Strand Board backing. Covered with a minimum of 14 oz. fire-retardant vinyl in a variety of colors (see next page). This pad has a certified class A fire rating in accordance with NFPA 255/ASTM E-84.

Item #	Size	Description
JWP-A-26	2' x 6'	lip top & bottom
JWP-A-26Z	2' x 6'	z-clip top & lip bottom
JWP-A-26ZZ	2' x 6'	z-clip top & bottom



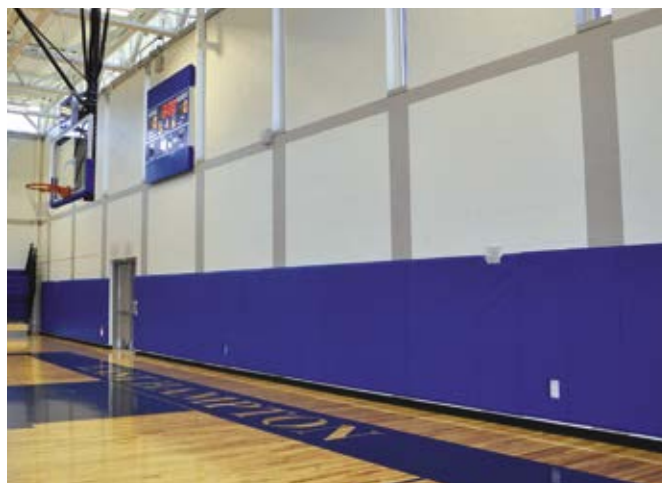
**WallGUARD™**

Fire/Impact Wall Padding

## FIRE/IMPACT WALL PADDING

2" thick fire-retardant and high impact foam with  $\frac{7}{16}$ " Oriented Strand Board backing. Covered with 14 oz. fire-retardant vinyl in a variety of colors (see next page). This pad exceeds impact standards as defined in ASTM F2440-04, and has a certified class A fire rating in accordance with NFPA 255/ASTM E-84.

Item #	Size	Description
JWP-AI-26	2' x 6'	lip top & bottom
JWP-AI-26Z	2' x 6'	z-clip top & lip bottom
JWP-AI-26ZZ	2' x 6'	z-clip top & bottom





## Let Jaypro help with your facility needs

**Pads that offer player protection to meet your facilities needs. Keep your atmosphere and playing area as safe and comfortable as possible.**

1. Provides excellent wall protection to absorb player impact
2. Reduces noise levels in any facility
3. Wall padding should be installed on all rigid surfaces located in close proximity (within 10') to active playing areas

**VINYL PAD COLORS:** *Specify pad color when ordering*



**Mounting options:**

Lip top and bottom

Z-clip top and lip bottom

Z-clip top and bottom



**Custom Wall Pad Project?  
Call for a Quote!**

**Visit [JAYPRO.COM](http://JAYPRO.COM) for product specifications**



# CUSTOM SIZE PADDING



## L-SHAPED CORNERS

Ideal for a setting where any exposed obstruction must be completely covered on all sides. Fire retardant vinyl with high impact foam. Variety of attachment methods.

*Specify pad color when ordering.*



## I-BEAM WRAP

Protect exposed I-beams. Designed to wrap the face and front edges of the beam. Fire retardant vinyl with high impact foam. Hook and loop attachment.

*Specify pad color when ordering.*



## COLUMN PADDING

Protect exposed columns commonly found in indoor facilities. Fire retardant vinyl with high impact foam. Variety of attachment methods.

*Specify pad color when ordering.*

## STAGE PADDING

Pads designed specifically for stage applications. Folding design permits easy storage access. Fire retardant vinyl with high impact foam. Variety of attachment methods.

*Specify pad color when ordering.*



### VINYL PAD COLORS:



RED



NAVY BLUE



FOREST GREEN



BLACK



ROYAL BLUE



GRAY



MAROON



PURPLE



KELLY GREEN



YELLOW



PINK



TAN



ORANGE



LIGHT BLUE

## WALL PAD GRAPHICS

Customize your gymnasium with your team logo or school graphics. *Contact customer service at 800-243-0533 for Custom Graphics and Pricing.*



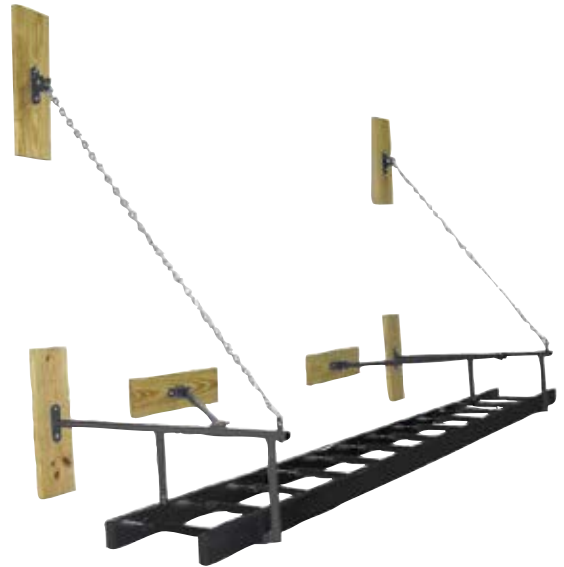
# GYMNASIUM ACCESSORIES

**Note:** Due to difference in wall construction, Jaypro Sports does not provide anchors or mounting hardware to attach the wall stringers to gymnasium walls. Consult your architect or contractor to determine the best and safest installation methods for your facility.

## WALL-MOUNTED GYM LADDER

Steel frame with welded supports for strength and durability that have a powder coated black finish that is textured for safety. In addition the inner braces provide stability for lateral movement. The ladder is attached with wood stringers (included) and is additionally supported with a heavy-duty chain. Frame extends 48" from wall. Ladder is 12'L x 18"W.

WML-100



### VERTICAL CLIMBING LADDER

Features 1<sup>5</sup>/<sub>16</sub>" steel tubing construction that has a powder coated black finish that is textured for safety. Heavy-duty wall mounting plates. Ladder is 60"L x 22"W.

WVL-7



### WALL GRID CLIMBER

Features 1<sup>5</sup>/<sub>16</sub>" steel tubing construction that has a powder coated black finish that is textured for safety. Grid is 4 x 5 rows with 6" pattern. Heavy-duty wall mounting plates. Unit size is 45"L x 30"W.

WGC-20



### ADJUSTABLE WALL-MOUNTED CHINNING BAR

All-welded 30"W steel frame with black powder coat finish. Provides 2' of height adjustment in 6" increments.

EWM-30



### JUMP ROPE RACK

Wall-mounted all steel construction with black powder coat finish. 27"L with (5) 10" long pegs for storage.

PE-110



**FOR DETAILS AND  
PRICING VISIT  
[WWW.JAYPRO.COM](http://WWW.JAYPRO.COM)**



# OUTDOOR FACILITIES



Bleachers



Player Benches



Soccer Goals







Football  
Goal Posts



Football Post  
Protector  
Padding

As we find ways to do more with less space, having sports equipment that works together has become the new standard in outdoor sports equipment. Jaypro Sports has designed our outdoor sports equipment with ways that allow for one field to accommodate many sports.

From easy to move goals that store out of the way to a soccer goal that fits directly under the football goal post. You can find many creative solutions for your sports equipment needs.

Not just sports equipment, but all the accessories that are needed for safe play and spectator viewing: benches, bleachers, field and safety netting.

When considering an outdoor sports facility you need someone who knows and understands the requirements of a safe and functional sports complex. Jaypro Sports has the solutions for you. Let us supply the facilities of your dreams.



# BARRIER NET SYSTEMS





Stop wasting time chasing missed shots or errant passes during practice. The UV protected, Barrier Net systems from Jaypro Sports are designed for easy installation and removal when not in use. High impact netting helps protect your facilities and ensures the safety of athletes, coaches and spectators during game day play.

Jaypro engineers and designers can design a customized barrier netting system for your facilities. Available in multiple heights and lengths, portable and semi-permanent installations.

We can customize  
any field layout per  
your request!



Surround your field with **FIELDPRO™** netting for a safer design and professional look!



Customize your Field and Facility with Barrier net options with several poles and nets to choose from.

- Straight or offset poles with optional powder coat finish.
- 1¾", 3½" or 4" square mesh net
- Easy to use hoist system for quick install/removal of net
- Ground sleeves for system removal

Work with our Engineers to make your netting options work for you.

# BARRIER NET SYSTEMS



**10' Straight Pole** with multi-sport net is ideal for use as a Lacrosse and Field Hockey backstop net. The net is clipped at the top and bottom of each pole.

**15', 20', 25', 30', and 40' Straight Pole** comes with a hoist system allowing quick and easy lowering/removal of the net after the game, season, or before a big storm. Reinstalling the net is a snap - all from ground level with no need for a ladder.

**20' Offset Pole** provides 3' of offset which is ideal for use around the perimeter of soccer and baseball/softball fields. It's also an added measure of safety from ricocheting balls.

## Features:

- Pulley system to raise/lower net (excludes 10' poles)
- (4) net options to choose from
- Ground sleeves facilitate installation and allow for system removal as needed
- Covers for ground sleeves are sold separately

Visit [JAYPRO.COM](http://JAYPRO.COM)  
for product specifications

Pole	Pole Description	Net	Net Description
FN-10	10' tall straight 2 $\frac{3}{8}$ " OD heavy-walled aluminum pole	FN-A	#36 knotted multi-sport UV treated nylon net with 1 $\frac{3}{4}$ " sq. mesh and $\frac{1}{4}$ " rope border
FN-15	15' tall straight 4" OD heavy-walled aluminum pole	FN-B	#36 knotted soccer/football UV treated nylon net with 3 $\frac{1}{2}$ " sq. mesh and $\frac{1}{4}$ " rope border
FNS-20	20' tall straight 4" OD heavy-walled aluminum pole	FN-C	HTPP knotless UV treated net with 1 $\frac{3}{4}$ " sq. mesh and $\frac{1}{4}$ " rope border
FNO-20	20' tall offset 4" OD heavy-walled aluminum pole	FN-D	HTPP knotless UV treated net with 4" sq. mesh and $\frac{1}{4}$ " rope border
FNS-25	25' tall straight 6 $\frac{5}{8}$ " OD heavy-walled aluminum pole		
FNS-30	30' tall straight 6 $\frac{5}{8}$ " OD heavy-walled aluminum pole		
FNS-40	40' tall straight 6 $\frac{5}{8}$ " OD heavy-walled steel pole		
FN-SPECIAL	Custom for your facility		



## FIELDPRO™ MULTI-SPORT NET SYSTEM

Ball stop net system for lacrosse, field hockey, and other field sports. Ensure the safety of athletes, coaches, and spectators! (4) 4" heavy-walled aluminum uprights, ground sleeves, a #36 knotted black nylon net with 1¾" sq. mesh. Pulley system and corrosion-resistant hardware included. *Standard upright color is black.*

**15'H x 65'W** FNMB-65



## FIELDPRO™ FOOTBALL NET SYSTEM

Keep field goals and extra point kicks away from spectators and inside the field. (2) 6½" heavy-walled aluminum or 8½" heavy-walled steel uprights, ground sleeves, and a #36 knotted black nylon net with 3½" sq. mesh. Pulley system and corrosion-resistant hardware included. Available in 30', 40' and 50' high models. *Standard upright color is a natural finish.*

<b>30'H x 40'W - 6½" aluminum</b>	FNFB-30
<b>30'H x 50'W - 6½" aluminum</b>	FNFB-3050
<b>40'H x 40'W - 6½" aluminum</b>	FNFB-40
<b>40'H x 60'W - 8½" steel</b>	FNFB-4060
<b>50'H x 50'W - 8½" steel</b>	FNFB-5050
<b>50'H x 60'W - 8½" steel</b>	FNFB-5060

## FIELDPRO™ SOCCER NET SYSTEM

Ensure the safety of athletes, coaches, and spectators. (4) 4" heavy-walled aluminum uprights, ground sleeves, and a #36 knotted black nylon net with 3½" sq. mesh. Pulley system and corrosion-resistant hardware included. *Standard upright color is black.*

**20'H x 65'W** FNSB-65



# FIELDPRO™ NET SYSTEM



## PORTABLE FIELDPRO™ NET SYSTEM

Lightweight indoor/outdoor portable net system for fields and courts where in-ground sleeve systems are not an option. Can also be used as a multi-field/court space divider! Easy net assembly with cable clamps and sliding rings. 12' tall x 2 $\frac{3}{8}$ " diameter aluminum poles on tip-and-roll bases with no-flat tires. Counterweight containers and corrosion-resistant hardware included. Optional vinyl base covers (PFN-BCVR) sold separately.

*Poles can be powder coated black (specify when ordering). Typical pole spacing is 18' apart and should not exceed 20'. Sold per base dependent on overall length needs (specify when ordering).*

*NOTE: It is the customer's responsibility to fill counterweight containers.*



## FIELDPRO™ NET SYSTEM BASE COVER

Vinyl base cover slides over counterweight containers. Standard color is red.

**Red**

PFN-BCVR



## PORTABLE FIELDPRO™ NET SYSTEM PACKAGE

Keep balls on the field and ensure the safety of spectators.

Package Includes:

- 4 poles with black powder coat finish
- 4 bases with (16) 5 gallon jugs
- 1 $\frac{3}{4}$ " knotted nylon net
- Red vinyl base covers included
- 12'H x 60'L

PFN-1260PKG



Counterweight Jugs

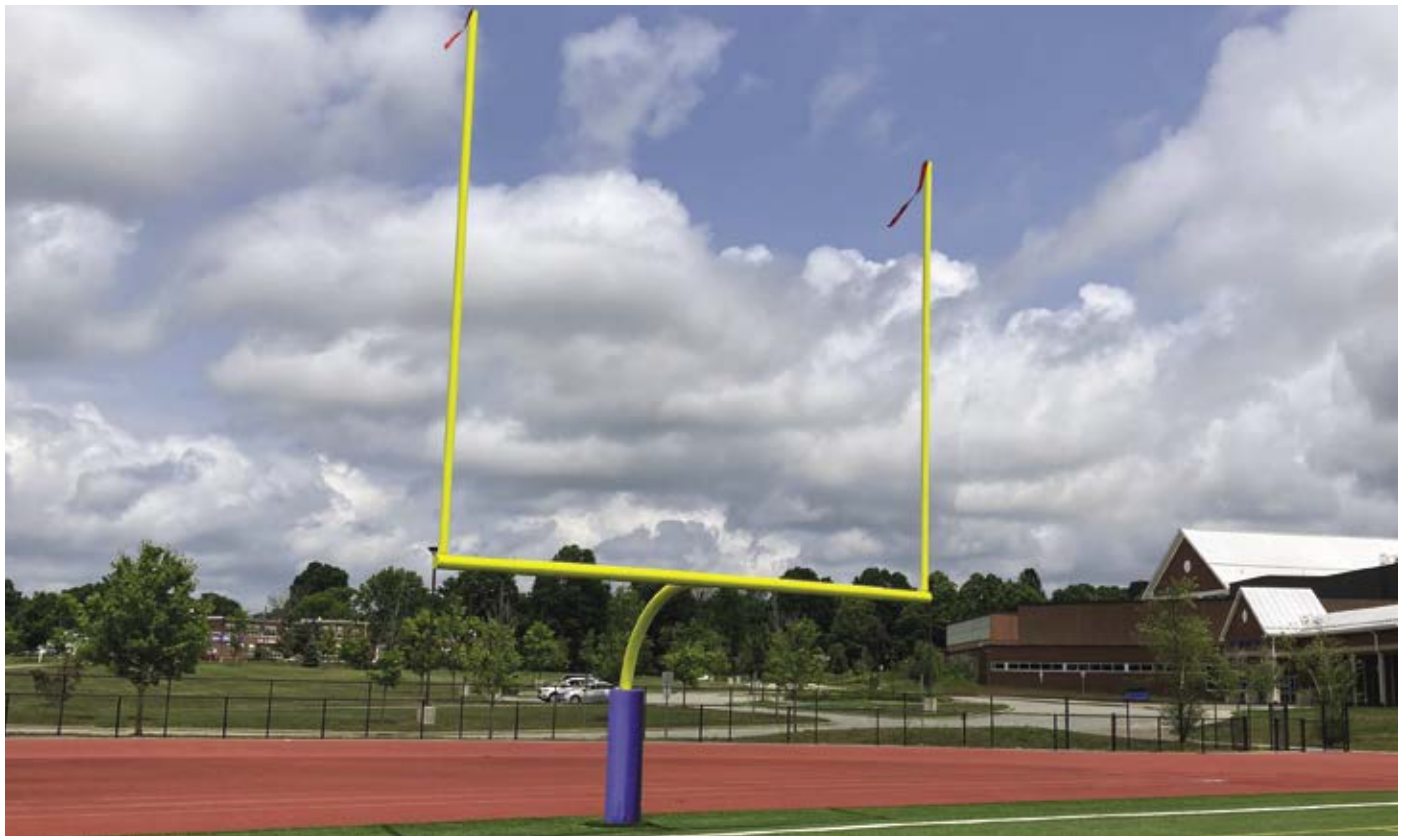


Base Covers



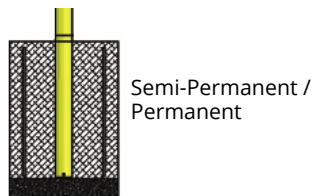


# MAX-1 ALUMINUM FOOTBALL GOAL POSTS



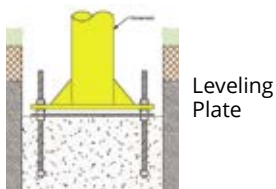
## High School: 23' 4"W - Semi-Permanent / Permanent

Offset	Uprights	Item #
6'	20'	FBGP-520
6'	30'	FBGP-530
8'	20'	FBGP-820
8'	30'	FBGP-830

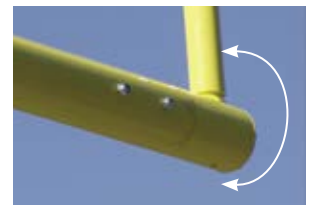


## High School: 23' 4"W - Leveling Plate

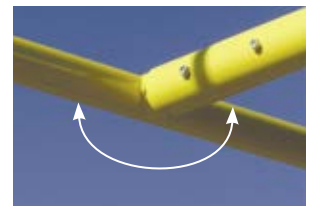
Offset	Uprights	Item #
6'	20'	FBGP-420
6'	30'	FBGP-430
8'	20'	FBGP-920
8'	30'	FBGP-930



## Max-1™ Features:



Adjustable in two directions



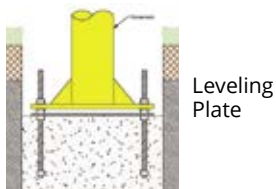
## Collegiate: 18' 6"W - Semi-Permanent / Permanent

Offset	Uprights	Item #
6'	20'	FBGP-520C
6'	30'	FBGP-530C
8'	20'	FBGP-820C
8'	30'	FBGP-830C



## Collegiate: 18' 6"W - Leveling Plate

Offset	Uprights	Item #
6'	20'	FBGP-420C
6'	30'	FBGP-430C
8'	20'	FBGP-920C
8'	30'	FBGP-930C



## POWDER COAT COLORS:



WHITE



YELLOW



PRO YELLOW



## MAX-1™ ALUMINUM FOOTBALL GOAL POSTS

All aluminum goal posts available in high school and collegiate official sizes. NCAA and NFHS compliant. 6⅝" crossbar and gooseneck available with 6' or 8' offset. 4" uprights available in 20' or 30' heights. 30' uprights are two-piece (Single-piece available upon request). Adjustable in two directions ensures crossbar and uprights are level and plumb. Permanent/semi-permanent or adjustable leveling plate installation. Includes wind streamers. Ground sleeves for semi-permanent installation sold separately.

*8' offset perfect for multi-purpose fields can be used with soccer goals SGP-600AX, SGP-400, SGP-760, and CC24S.*

**White, Yellow or Pro Yellow powder coat options.**



### GROUND SLEEVES WITH HEIGHT ADJUSTERS

Adjustable and easy to align.

**6⅝" Post - Max-1**  
FBGPGS-8

### STANDARD GROUND SLEEVES

Allows for semi-permanent installation.

**6⅝" Post - Max-1**  
FBSLV8



## FOOTBALL HINGE KIT

Allows any surface-mounted MAX-1™ football goal to be lowered and dismantled from ground level by a maintenance crew. Ideal for multi-purpose facilities! Opposing pull pins offer easy separation of hinge plates. Required access frame and cover (FBGPAF-2) sold separately.



FBHG-1

## ACCESS FRAMES AND COVERS

For use with semi-permanent goals requiring removal from grass or turf fields. Aluminum, pressure-treated plywood, and artificial turf design. 2 frames and 2 turf covered ½ plug plates included. Full turf covered plates (optional).

**Goals w/ Leveling Plate**  
**18" x 18" x 6½"**  
FBGPAF-1

**Goals w/ Hinge Kit on**  
**Max-1™**  
**26" x 26" x 10"**  
FBGPAF-2

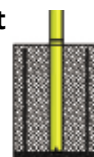


## MAX-1™ EXPANDABLE CROSSBARS

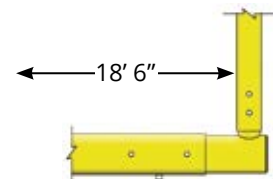
Telescoping design adjusts crossbar width for official use at 23' 4" (high school) and 18' 6" (collegiate). Anti-rotation feature holds uprights in place allowing adjustment by one person.

### Expandable: 18' 3" - 23' 4"W - Semi-Permanent / Permanent

Offset	Uprights	Item #
6'	20'	FBGP-520AX
8'	20'	FBGP-820AX

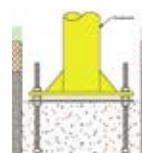


Semi-Permanent / Permanent

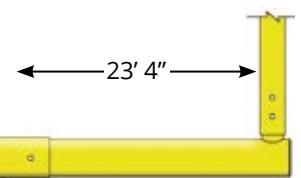


### Expandable: 18' 3" - 23' 4"W - Leveling Plate

Offset	Uprights	Item #
6'	20'	FBGP-420AX
8'	20'	FBGP-920AX



Leveling Plate





# STEEL FOOTBALL GOAL POSTS

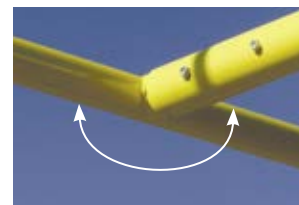
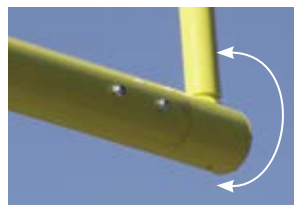


## STEEL FOOTBALL GOAL POSTS

Steel goal posts available in high school and collegiate official sizes. NCAA and NFHS compliant. Posts are 4½" with 5' offset or 5⅞" with 6' offset models. 2⅜" aluminum uprights, steel gooseneck and crossbar. Adjustable in two directions ensures crossbar and uprights are level and plumb. Permanent/semi-permanent or adjustable leveling plate installation. Includes wind streamers. Ground sleeves for semi-permanent installation sold separately.

*White or Yellow powder coat options.*

**Goal Features:** Adjustable in two directions



**POWDER COAT COLORS:**



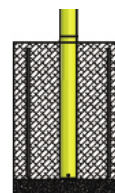
WHITE



YELLOW

### High School: 23' 4"W - Semi-Permanent / Permanent

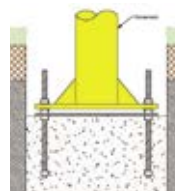
Offset	Uprights	Color	Gooseneck	Item #
5'	20'	Yellow	4½"	FBGP-620YW
5'	20'	White	4½"	FBGP-620
6'	20'	Yellow	5⅞"	FBGP-720YW
6'	20'	White	5⅞"	FBGP-720



Semi-Permanent / Permanent

### High School: 23' 4"W - Leveling Plate

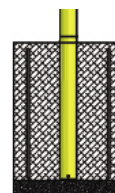
Offset	Uprights	Color	Gooseneck	Item #
5'	20'	Yellow	4½"	FBGP-600YW
5'	20'	White	4½"	FBGP-600
6'	20'	Yellow	5⅞"	FBGP-700YW
6'	20'	White	5⅞"	FBGP-700



Leveling Plate

### Collegiate: 18' 6"W - Semi-Permanent / Permanent

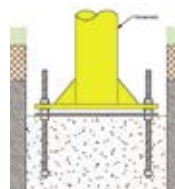
Offset	Uprights	Color	Gooseneck	Item #
6'	20'	Yellow	5⅞"	FBGP-720XCYW
6'	20'	White	5⅞"	FBGP-720C



Semi-Permanent / Permanent

### Collegiate: 18' 6"W - Leveling Plate

Offset	Uprights	Color	Gooseneck	Item #
6'	20'	Yellow	5⅞"	FBGP-700CYW
6'	20'	White	5⅞"	FBGP-700C



Leveling Plate



## STANDARD GROUND SLEEVES

Allows for semi-permanent installation.

**5<sup>9</sup>/<sub>16</sub>" Post - Steel Post** FBSLV6

**4<sup>1</sup>/<sub>2</sub>" Post - Steel Post** FBSLV5



## ACCESS FRAMES AND COVERS

For use with semi-permanent goals requiring removal from grass or turf fields. Aluminum, pressure-treated plywood, and artificial turf design. 2 frames and 2 turf covered <sup>1</sup>/<sub>2</sub> plug plates included.

**Goals w/ Leveling Plate: 18" x 18" x 6<sup>1</sup>/<sub>2</sub>"**

FBGPAF-1



## GROUND SLEEVES WITH HEIGHT ADJUSTERS

Adjustable and easy to align.

**5<sup>9</sup>/<sub>16</sub>" Post - Steel Post** FBGPGS-6

**4<sup>1</sup>/<sub>2</sub>" Post - Steel Post** FBGPGS-5

## PRO GOAL POST PADS

6" thick x 6' tall cylindrical high density polyurethane foam. Covered in 14 oz. thick vinyl with a hook-and-loop vertical closure.

*Specify pad color when ordering.*

**6<sup>5</sup>/<sub>8</sub>" Post** PPP-800

**5<sup>9</sup>/<sub>16</sub>" Post** PPP-700

**4<sup>1</sup>/<sub>2</sub>" Post** PPP-500



## GOAL POST PADS

4" thick x 6' tall cylindrical high density polyurethane foam. Covered in 14 oz. thick vinyl with a hook-and-loop vertical closure.

*Specify pad color when ordering.*

**5<sup>9</sup>/<sub>16</sub>" Post** PPP-300

**4<sup>1</sup>/<sub>2</sub>" Post** PPP-100

### VINYL PAD COLORS:



## GOAL POST PAD DIGITAL GRAPHICS

Customize your post padding.  
*Extended lead time.*

**Multi-color** JSG-FPP





# OUTDOOR BASKETBALL SYSTEMS



## TITAN™ ADJUSTABLE SERIES

Heavy-duty adjustable steel systems for indoor/outdoor play. A colossal achievement in high performance hoops!

Adjustable height of 5½' to 10'. 2" x 4" heavy gauge steel extension arms. Tempered glass backboards. Reliable actuator and safety pin-stop. Duplex coating "hot dip" galvanized with black powder coat finish. Breakaway rim or flex goal, nylon net, and stainless steel hardware included. Black pole padding and backboard edge padding included.

Item #	Upright	Offset	Backboard
--------	---------	--------	-----------

### with Tempered Glass Backboard

CV684A	6" x 8"	4'	42" x 72"
CV664A	6" x 6"	4'	42" x 72"
CV553B	5" x 5"	3'	36" x 60"

### with Acrylic Backboard

CVAC66	6" x 6"	4'	42" x 72"
--------	---------	----	-----------



### Clear View Shot Design Technology

Minimizes the distraction of a structure typically located at the center of the backboard.



### Lift Assist Technology

Heavy-duty actuator with dual assist springs makes for effortless height adjustment. Crank handle removes to prevent unauthorized adjustment.

# TITAN™

**FIXED SERIES**



**Heavy-duty fixed height system with backboard and goal mounted directly to extension arm for exceptional strength. Reinforced with rear support braces!**

**Upright options:**

Galvanized or Powder Coated Black

**Backboard options:**

Acrylic, Steel, Perforated Steel or Glass

**Goal options:**

Playground or Flex Goal

**TITAN™**

Unit buries 48" into ground. 6" square steel upright with angled extension arm. Height can be adjusted after court resurfacing. Heavy-duty goal and nylon net included. Backboard size - 72"W x 42"H.

For more information,  
scan below or go to:  
[www.jaypro.com/Fixed-Height](http://www.jaypro.com/Fixed-Height)







Double



Steel - 850RB-BB



Acrylic - LS-200BB



## THE PLAYGROUND

Durable fixed height system with black powder coat finish and acrylic or steel backboards. 66" extension arm for "play safe" area! Unit buries 48" into ground. 6" square steel upright with angled extension arm. Height can be adjusted after court resurfacing. Contender Breakaway goal (GBA-548), net (JNY-6HP), post and backboard edge padding (EP-46)\* included. Backboard size - 72"W x 42"H.

\*Steel backboard does not include edge padding.

\*Replacement backboards available online.

<b>Acrylic</b>	LS-200
<b>Steel</b>	LS-200RS
<b>Double Acrylic</b>	LD-200



Acrylic



## THE CHURCH YARD

Durable fixed height system with black powder coat finish and acrylic or aluminum fan backboard. 40" extension arm for "play safe" area! Unit buries 48" into ground. 4" square steel upright with angled extension arm. Height can be adjusted after court resurfacing. Contender Breakaway goal (GBA-548), net (JNY-6HP), post (PP-44) and backboard edge padding\* (EP-48) included. Acrylic Backboard - 48"W x 36"H. Aluminum Fan Backboard - 54"W x 36"H.

\*Aluminum fan backboard does not include edge padding.

<b>Acrylic</b>	400-AC-FG
<b>Aluminum Fan</b>	400-FA-FG

## 3½" GOOSENECK SYSTEM

Direct mount style system with backboard and goal mounted directly to extension arm for exceptional strength. 36" extension arm for "play safe" area! 3½" zinc undercoated steel upright that has either galvanized or powder coat finish option. Aluminum fan backboard (ALB-24BT), goal (GB-55), and nylon net (JNY-4HP) included. Backboard size - 54"W x 36"H.

<b>Black</b>	455-FABT-SR-BK
<b>Royal Blue</b>	455-FABT-SR-RB
<b>Forest Green</b>	455-FABT-SR-FG
<b>Galvanized</b>	455-FABT-SR



Black Post



Royal Blue Post



Forest Green Post



Galvanized Post

## ULTIMATE ADJUSTABLE GOOSENECK

A complete adjustable gooseneck system with the benefits of a Hoop Rejuvenator™ Kit. 4½" OD heavy-walled galvanized steel post. H-frame style with 48" extension for "play safe" area. Acrylic, rectangular steel and aluminum fan backboard options. Breakaway goal (UBG-500F), and Hoop Rejuvenator™ Kit included.

<b>72" x 42" Acrylic Board</b>	UAG-AC
<b>54" x 36" Aluminum Fan Board</b>	UAG-FA
<b>72" x 42" Steel Board</b>	UAG-RC





# GOOSENECK SYSTEMS



Shown with optional powder coating on pole

For more information,  
scan below or go to:  
[www.jaypro.com/Gooseneck](http://www.jaypro.com/Gooseneck)



Rugged all galvanized steel  $4\frac{1}{2}$ " or  $5\frac{5}{16}$ " Schedule 40 diameter post has a 4' or 6' offset with direct mount welded to gooseneck for durability and stability. Additionally, two  $1\frac{5}{16}$  inch diameter steel braces are provided with rectangular backboards. Easy to install and virtually maintenance free. Pole powder coat options available, additional charges apply. See website for backboard and goal combinations.

**POWDER COAT COLORS:** *Black is standard, other powder coat colors should be specified.*



RED



NAVY  
BLUE



YELLOW



GOLD



GRAY



BLACK



MAROON



DARK  
GREEN



KELLY  
GREEN



ROYAL  
BLUE



WHITE



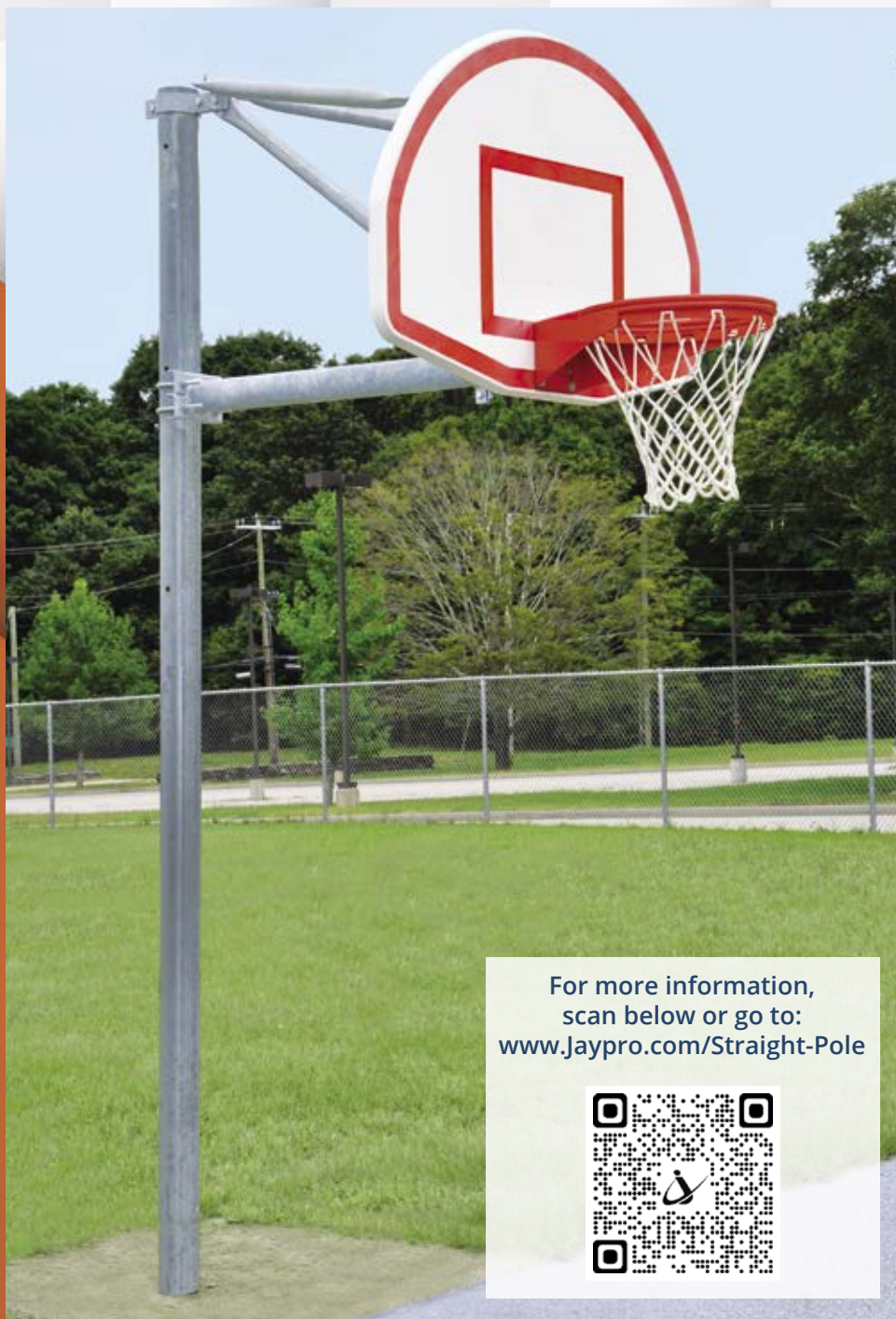
ORANGE



PURPLE



# STRAIGHT POST SYSTEMS



For more information,  
scan below or go to:  
[www.Jaypro.com/Straight-Pole](http://www.Jaypro.com/Straight-Pole)



Easy to install and virtually maintenance free, The out rigger/strut design allows you to set your playing height without compromising strength and stability. 4½" or 5⅞" OD galvanized steel upright is available with 4' or 6' offset. The system is designed for safety, with the 4' outrigger design. Pole powder coat options available, additional charges apply. See website for backboard and board combinations.

**POWDER COAT COLORS:** *Black is standard, other powder coat colors should be specified.*



RED



NAVY  
BLUE



YELLOW



GOLD



GRAY



BLACK



MAROON



DARK  
GREEN



KELLY  
GREEN



ROYAL  
BLUE



WHITE



ORANGE



PURPLE



# BASKETBALL POST PADDING



## BASKETBALL POST PADDING

- 6' tall x 30" wide padding with 4" thick high-density foam
- 12½" diameter
- 14 oz. vinyl cover (available in 14 colors) with grommet flaps for rear lacing
- Lacing cord included
- Fits 4½" posts

**4½" OD Pole**

PPP-5HP



## PRO STYLE PROTECTOR PAD

- 6' tall pad with minimum of 6" thick cylindrical high-density foam
- 17½" diameter
- 14 oz. nylon reinforced vinyl cover (available in 14 colors) with hook-and-loop closure

**4½" OD Pole**

PPP-500HP

**5⅞" OD Pole**

PPP-700HP



## PRO STYLE PROTECTOR PAD

- 6' tall pad with minimum of 3¾" thick cylindrical protective safety foam
- 13" diameter
- 14 oz. nylon reinforced vinyl cover (available in 14 colors) with hook-and-loop closure

**4½" OD Pole**

PPP-100

**5⅞" OD Pole**

PPP-300

### VINYL PAD COLORS:



RED



NAVY BLUE



FOREST GREEN



BLACK



ROYAL BLUE



GRAY



MAROON



PURPLE



KELLY GREEN



YELLOW



PINK



TAN



ORANGE



LIGHT BLUE

# CUSTOM GRAPHICS FOR POST PADDING

Customize basketball post pads with digital graphics.



## BASKETBALL POST PAD DIGITAL GRAPHICS

Customize your post padding.

Contact customer service at 800-243-0533 for artwork requirements. Extended lead time.

**Multi-color**

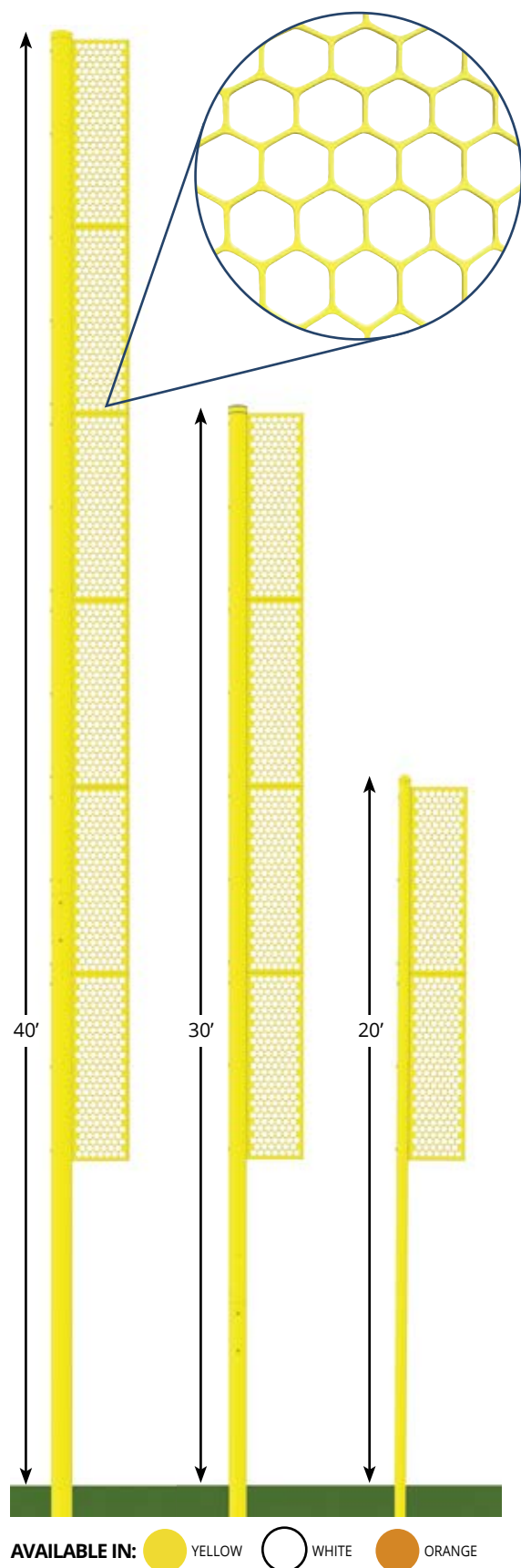
JSG-BPP2





# FOUL POLES

## PROFESSIONAL



Baseball and softball foul poles designed to optimize air passage and engineered to with-stand up to 130 mph winds!

Perm/Semi-Perm and Surface Mount installation available with colors of Yellow, White or Orange!

### AVAILABLE SIZES:

**20'H** - Main upright is 3½" OD Sch 40 zinc coated steel (1 piece) with (2) 5'H x 18"W x 2"D bolt-on wing panels made of 11 gauge perforated steel.

**30'H** - Main upright is 5<sup>9</sup>/<sub>16</sub>" OD Sch 40 zinc coated steel (2 piece) with (4) 5'H x 18"W x 2"D bolt-on wing panels made of 11 gauge perforated steel.

**40'H** - Main upright is 6<sup>5</sup>/<sub>8</sub>" OD Sch 40 zinc coated steel (2 piece) with (6) 5'H x 18"W x 2"D bolt-on wing panels made of 11 gauge perforated steel.

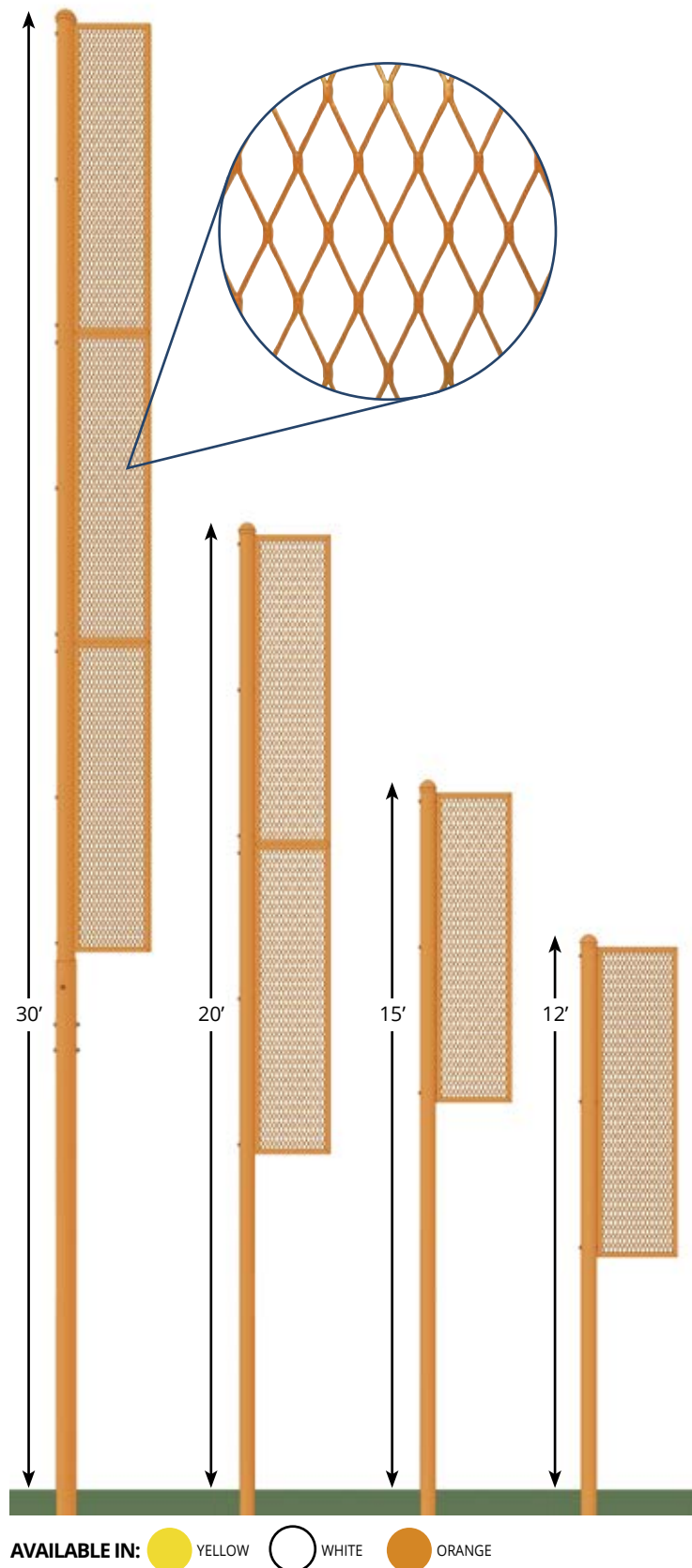


### FOUL POLE GROUND SLEEVES

For semi-permanent installation of foul poles. Facilitates easy installation and maintenance. Available for 12', 15', 20', 30' and 40' poles.

FPS-XX

## COLLEGIATE



Baseball and softball foul poles with a zinc undercoating and powder coat finish of Yellow, White or Orange!

Perm/Semi-Perm and Surface Mount installation available.

### AVAILABLE SIZES:

**12'H** - Main upright is 3½" heavy-duty steel tube pole (1 piece) with (1) 6'H x 18"W bolt-on all steel expanded metal wing panel.

**15'H** - Main upright is 3½" heavy-duty steel tube pole (1 piece) with (1) 6'H x 18"W bolt-on all steel expanded metal wing panel.

**20'H** - Main upright is 3½" heavy-duty steel tube pole (1 piece) with (2) 6'H x 18"W bolt-on all steel expanded metal wing panels.

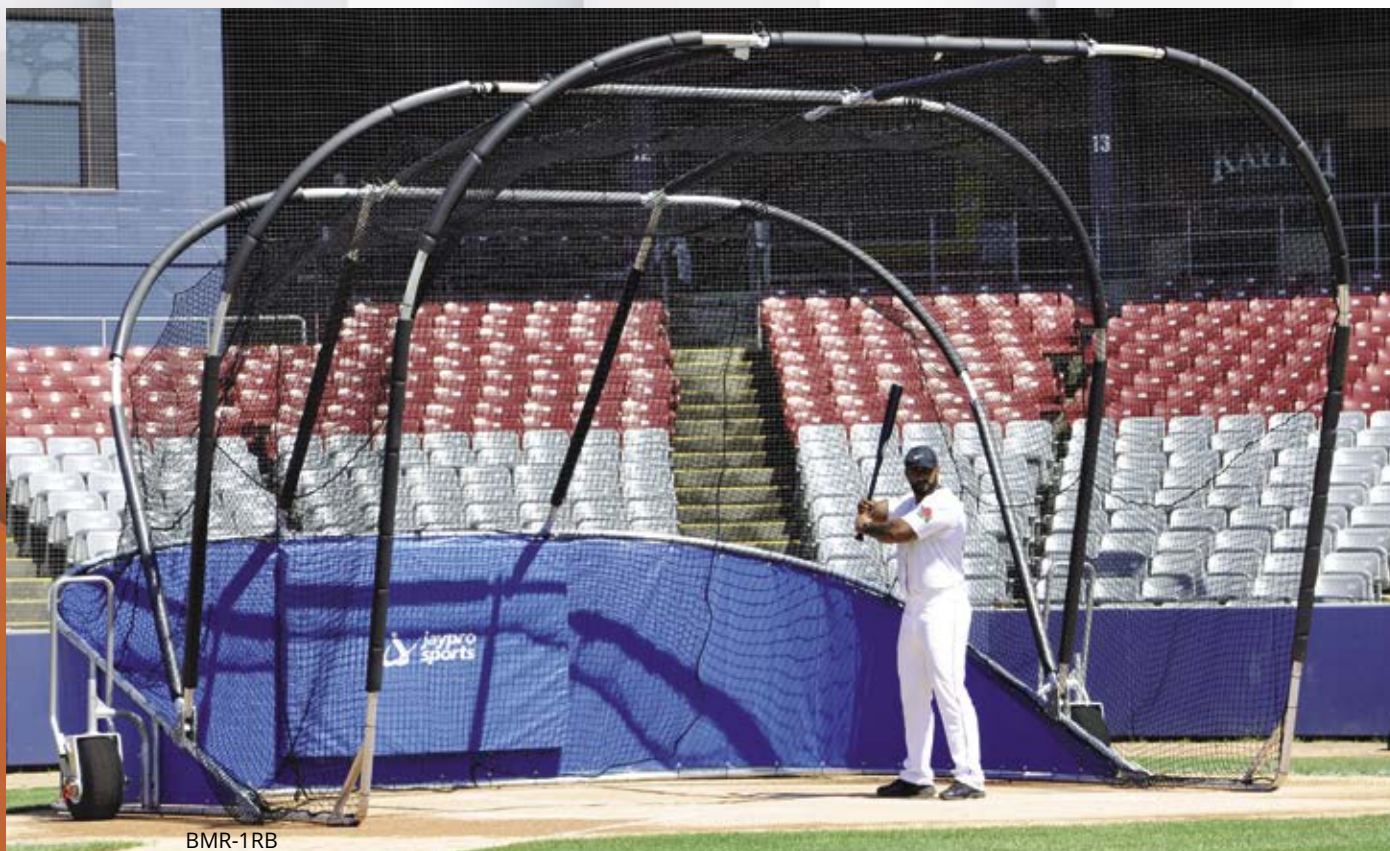
**30'H** - Main upright is 4½" heavy-duty steel tube pole (2 piece) with (3) 6'H x 18"W bolt-on all steel expanded metal wing panels.

For more information,  
scan below or go to:  
[www.Jaypro.com/Foul-Poles](http://www.Jaypro.com/Foul-Poles)

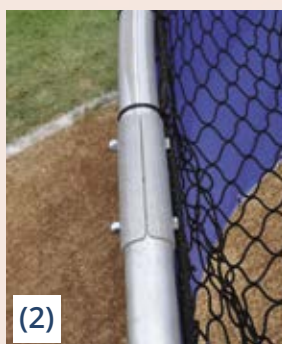




# BIG LEAGUE BATTING CAGES



## BUY A BETTER CAGE!



### Jaypro's swivel wheel allows for a more precise cage placement!

- (1) The addition of handle wheels controls the cage height over uneven surfaces, which allows for additional leverage to lift and raise the cage. Reduces cage drag and divots while in motion.
  - (2) Includes joint reinforcing clamps for added rigidity
  - (3) Through-bolts and locking nut connections only, no allen screws here!
  - (4) 18"W x 9"D swivel tires can be adjusted to two different heights which allow movement in multiple directions for easy installation and removal on the playing field
- Fully welded design and pre-assembled side frames make the cage strong and rigid for a long life span
  - Net attaches directly to the frame and has reinforced seams and an integrated baffle



## #1 - BOMBER ALL-STAR

Heavy-duty portable batting cage with swivel side wheels and handles allows for easy transportation or movement on and off the field.

- 2" heavy-wall aluminum tube design
- #42 weather-treated nylon net with rear net baffle
- Thud pad, 18 oz. vinyl skirt, oversized swivel tires with handles, and black ricochet padding on frame w/ dual observation platforms
- Open Inside Dimensions - 12'H x 18'W x 22'D
- Folded Outside Dimensions - 6'H x 20'W x 15'D
- Thud Pad - 4'H x 6'W x 4"D
- Available in 6 colors: Royal Blue, Black, Red, Green, Navy Blue and Maroon

BMR-1

## #3 - BOMBER PRO

Heavy-duty portable batting cage with oversized pneumatic tires for spring training camps, semi-professional, and collegiate use.

- Constructed using the same heavy-duty cage as the Bomber All-Star with similar features.

BBGS-18

## #2 - BOMBER ELITE

Heavy-duty portable batting cage with side wheels that can be rotated and pinned 90°. Two height settings for added clearance during transport.

- Constructed using the same heavy-duty cage as the Bomber All-Star with similar features.

BGLC-7500

## #4 - BOMBER

Heavy-duty portable batting cage with heavy-duty tires for high school and collegiate training.

- Optional vinyl skirt (SKT-20XX) sold separately
- 12'H x 17'6"W x 12'D

BBLS-12



Easily bring down the Cage to get ready for Transport



Strong Struts won't slip



Rear Wheel & Dual Coaches Stand



Swivel Tires with Handles



Folds Down to 6' High



Thud Pad and Rear Net Baffle



# BATTING TUNNELS



## MEGA OUTDOOR BATTING TUNNEL FRAMES

Clean frame design (55' & 70') with less structure for balls to ricochet off. Easily slide net to one end for storage or remove snap hooks to pack net away during the off-season!

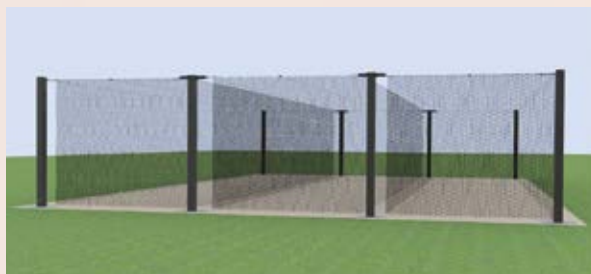
- 8" steel pole design with black powder coat finish
- Net attaches to tensioned galvanized aircraft cable
- Single tunnel and double tunnel models (permanent installation)
- #36 black knotted nylon net with 1 $\frac{3}{4}$ " sq. mesh included

**Single 55'** MPCTF-55S

**Single 70'** MPCTF-70S

**Double 55'** MPCTF-55D

**Double 70'** MPCTF-70D



## MEGA STACKABLE TUNNEL KITS

Stack multiple tunnels (MPCTF-55S or MPCTF-70S) side by side.

- (2) center posts
- Cable and attachment hardware
- (1) #36 black knotted nylon net with 1 $\frac{3}{4}$ " sq. mesh included

**55' Cage** MPCTF-55A

**70' Cage** MPCTF-70A



PROTF-70

PROTF-70A

## PROFESSIONAL OUTDOOR BATTING TUNNEL FRAMES

Clean frame design (55' & 70') with less structure for balls to ricochet off. Individual hoist lines make for easy installation and removal of net! 4" curved aluminum tubing provide 3' offset. Available in single, double and stackable (PROTF-70A) tunnel models (permanent installation). Ground sleeves included. Recommended net (BBCP-7014 or BBCP-5514) sold separately.

**Single 55'** PROTF-55  
**Single 70'** PROTF-70

**Double 55'** PROTF-55T  
**Double 70'** PROTF-70T

**Stackable 55' Cage** PROTF-55A  
**Stackable 70' Cage** PROTF-70A



BBTF-70

## SEMI-PERMANENT OUTDOOR BATTING TUNNEL FRAMES

- 2" galvanized steel tubing design
- Net hangs on 3 rows of galvanized aircraft cable
- Ground sleeves included
- Tunnel nets sold separately

**70'L x 12'H** - 5 Wickets BBTF-70  
**55'L x 12'H** - 4 Wickets BBTF-55

## SURFACE-MOUNTED OUTDOOR BATTING TUNNEL FRAMES

Same features as the Semi-Permanent Frame except NO ground sleeves.

- 6" sq. surface-mount plates included

**70'L x 12'H** - 5 Wickets BBTFSM-70  
**55'L x 12'H** - 4 Wickets BBTFSM-55



# BACKSTOP NET SYSTEMS

## BASEBALL/SOFTBALL TENSIONED BACKSTOP NET SYSTEMS

Safety tensioned backstop netting designed to not only stop the ball, but minimize net deflection. Two basic systems are available.

### Tensioned Pole to Pole Backstop Net System

**BTPNS** Engineered structural poles support tensioned netting with fewer poles.

### Tensioned Cable Backstop Net System

**BPCNS** Pull-back cables attached to building structure or offset pull-back poles, for a cleaner look with reduced obstructions.

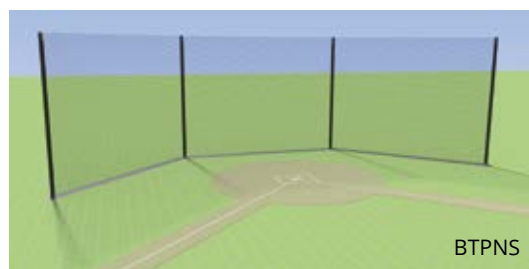
#### Features:

- Designed to meet your specific field/facility needs
- Engineered structural poles with heights up to 40 ft.
- In-ground and surface mount pole installations available
- Systems can be free-standing or incorporated into backstop knee-wall
- Netting Options:
  - #36 knotted nylon, 1 $\frac{3}{4}$ " black sq. mesh netting
  - 1 $\frac{3}{4}$ " black Dyneema (UHMWPE) sq. mesh netting, for unsurpassed strength and visibility
- Poles are powder coated black over zinc rich primer
- All hardware is galvanized

*Call for more information and design assistance.*



BTPNS

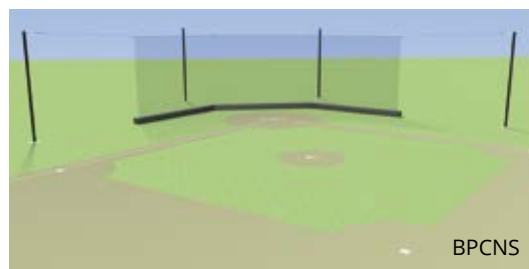


BTPNS

**Pole to Pole Net System**



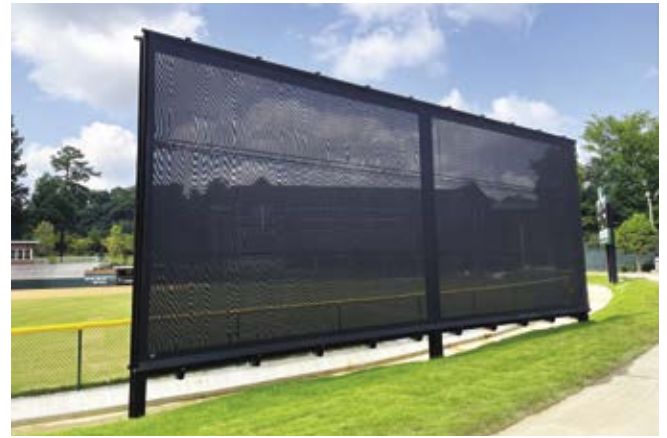
BPCNS



BPCNS

**Tensioned Cable Net System**

# BATTER'S EYE



The batter's eye or batter's eye screen is a solid-colored, usually dark area beyond the center field wall of a baseball stadium, that is the visual backdrop directly in the line of sight of a baseball batter, while facing the pitcher and awaiting a pitch. This dark surface allows the batter to see the pitched ball against a sharply contrasted and uncluttered background. Its purpose is the safety and hitting success of the batter.

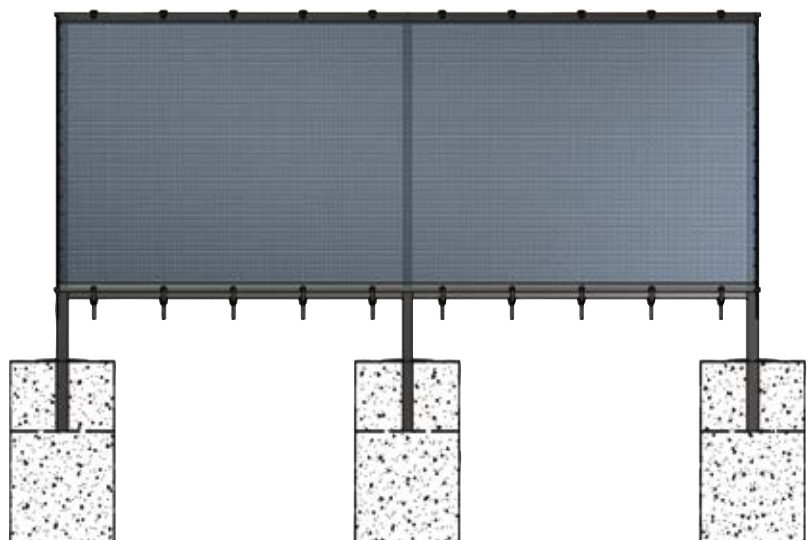
## WINDSCREEN OUTFIELD BATTER'S EYE

### Features:

- All I-beams are zinc primed with powder coated black finish
- Double single-piece black windscreen panel, front and back
- Includes all necessary assembly hardware
- Engineered to meet ASCE 7 105 MPH wind rating, exposure C
- Optional windscreen colors available
- Optional graphics image available

**20'H x 40'L panel** BE-24

**30'H x 60'L panel** BE-36





# WIND SCREENS



## PREMIUM WIND SCREEN

14 oz. / sq. yd. vinyl coated polyester mesh provides 75% shade.

- IncrediSeal™ heat sealed hems
- Grommets spaced every 18"
- 12 color options
- Graphics available
- Wind vents and cable ties sold separately

**6' Height**

WSCRN-6

**9' Height**

WSCRN-9

### Graphic Lettering and Logos

WSCRNLG

#### WIND SCREEN COLORS:



DARK GREEN



ROYAL BLUE



RED



LIGHT GRAY



KELLY GREEN



MAROON



NAVY BLUE



PURPLE



ORANGE



CAROLINA BLUE



YELLOW



WHITE



## CLASSIC WIND SCREEN

8 oz. / sq. yd. vinyl coated polyester mesh provides 84% shade.

- IncrediSeal™ heat sealed hems
- Grommets spaced every 18"
- Graphics available

- Color options: Forest Green, Royal Blue, Black, Red, Navy Blue, Orange, Maroon, Carolina Blue, Brown, Tan, Purple, Kelly Green, White, Gray, and Yellow.
- Wind vents and cable ties sold separately



Item #	Description
TWS-6	6'H Screen
TWS-9	9'H Screen
PCT-100	Cable Ties (100)
HMV-18	Half Moon Wind Flap

*Maximum length of a single piece wind screen is 100'. Screens over 100' will be made in sections. Custom heights above 6' will be charged at 9' pricing. Heights cannot exceed 9'. Wind screens higher than 6' require a centered horizontal lacing lip along entire length.*

# OUTDOOR WALL PADDING

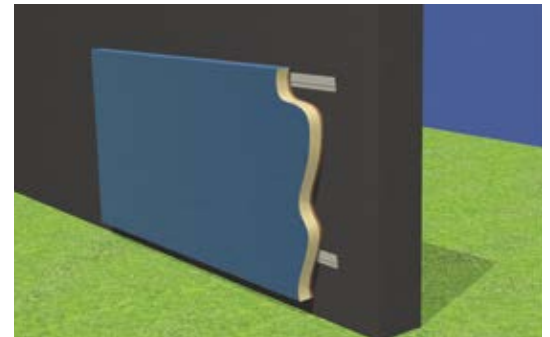
Protective padding is an essential component for providing a safe athletic environment. Reduce the risk of injury from unpredictable ricochets from foul tips and passed balls on the baseball field. Keep in mind the contact that players will have with outdoor fencing or walls and the risks that come with them.

## WOOD BACKED PADDING

- 2" or 3" thick high-impact polyurethane foam
- $\frac{3}{4}$ " exterior grade sheathing, sealed and stained on all sides
- 18 oz. vinyl with UV protection
- Attachment: Z-clip (for wood and masonry walls) or Lag and Disc (for chain link fence)
- Available in several sizes and with returns
- Optional graphics available (call for details)
- See below for vinyl colors (specify when ordering)



Shown with Optional Graphics



Z-clip attachment to a solid wall or structure



Lag and disc attachment to a chain link fence

## SEWN PADDING WITH GROMMETS

- 2" thick high-impact polyurethane foam
- 18 oz. vinyl with UV protection
- Sewn pad with 2" reinforced vinyl flap on top and bottom
- Brass grommets spaced every 12"
- Available in several sizes
- Optional graphics available (call for details and pricing)
- See below for vinyl colors (specify when ordering)



Shown with Optional Graphics



Top and bottom grommet attach to chain link fence

### VINYL PAD COLORS:





# FENCE TOP & RAIL PROTECTION



## FENCE TOP PROTECTION

- 4½" dia. pre-slit corrugated polyethylene for durability and UV protection
- Secure with tie wraps every 2' (sold separately)
- Color: Yellow (YW), Black (BK)



Item #	Size
CFC-100XX	100' Roll
CFC-250XX	250' Roll
CFC-TIESXX	19" Ties (Bag of 100)
CFC-ITool	Installation Tool



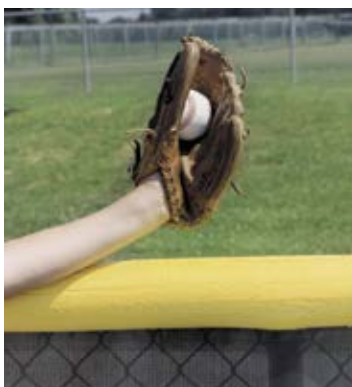
### COLORS:

- RED (RD)
- WHITE (WH)
- YELLOW (YW)
- FOREST GREEN (FG)
- ROYAL BLUE (RB)
- ORANGE (OR)

## FENCE GUARD

- Maintenance free exterior grade UV-resistant polyethylene
- Set of (12) 7' sections are pre-drilled every 2'
- Available in 6 colors
- Fence guard ties included

STC-8XX



## SAFEFOAM TUBULAR PADDING

- Tubular thick foam padding with durable skin coating
- Fits any 2½" dia. or less round pipe
- 8' long sections pre-slit for installation
- Minimum order of 6 pieces
- Secure with tie wraps every 2' (Yellow or Black, sold separately)
- Colors: Yellow (YW), Royal Blue (RB), Red (RD) and Green (GR)

**Padding** SF-PREMXX

### 100 Ties

**Yellow** SF-TIESYW

**Black** SF-TIESBK



## DELUXE FENCE TOP & RAIL PADDING

- 2" thick foam in 6' long sections encased in 18 oz. vinyl
- Fits 2" outside diameter pipe
- Grommets every 6" for attachment
- Color options: Maple Green, Royal Blue, Red, Navy Blue, Gray, Maroon, Sky Blue, Purple, Yellow, White, Tan, Black, Kelly Green and Orange

PRAFTP6



# FIELD ACCESSORIES



## PRO-STYLE HOLLYWOOD BASES

Used by the pros and ideal for advanced levels of play.

- 3 bases with a tapered lip that digs into the dirt
- 3 anchors and (3) 1 1/2" solid rubber plugs included
- 15" x 15" x 3"

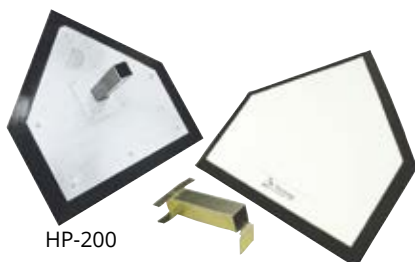
BB-500



## FLEX STYLE DOUBLE FIRST BASE

- Double first base reduces collisions and compresses on impact
- 2 anchors and (2) 1 1/2" solid rubber plugs included
- 30" x 15" x 3"

BB-400



HP-200



HP-250

## MAJOR LEAGUE HOME PLATE

- Durable molded rubber design
- Stanchion-mounted steel plate
- Removes easily for maintenance and storage

w/ 1 1/2" Anchor HP-200  
w/ 5 Zinc-Plated Spikes HP-250



## BURY-ALL HOME PLATE

- Rubber design with no corners/edges to catch spikes
- No-skid waterproof surface

HP-100



## PROFESSIONAL PITCHING RUBBERS

- Durable molded rubber design
- Interior PVC tube increases longevity
- Fill with dirt or concrete for added stability

6" x 24"

PR-624



## MOVABLE PITCHING RUBBER

- Heavy molded rubber
- 3 removable metal spikes included

24" long PR-324



## STEP DOWN PITCHING RUBBERS

- Heavy-duty all rubber design
- Step down style for better footing

24" long PR-524



## REMOVABLE PITCHING RUBBERS

- Heavy molded rubber
- Steel ground anchors included

24" long PR-424



## 10"H PRO GAME MOUND

Model is a six piece "snap together" game mound designed straight from the MLB Rulebook.

- 4 sided pitching rubber
- Full size mound for Pro level use
- 18' diameter, 10" height

PPM1810



# WORLD CUP GOAL



## **NOVA**<sup>TM</sup> World Cup<sup>TM</sup> Goal

**(SGP-850)** Up your game with the look and feel of a Professional team. Completely portable goal to use in situations where you cannot use ground sleeves. The back net posts have the option to powder coat your team color for a unique look. Easy Track<sup>TM</sup> net attachment system is on the complete frame and bottom bases for easy installation of the net. NCAA, NFHS and FIFA compliant. Available as goal pair, or package.

**12 Year Limited Warranty** on Goal

### Goal Features:



4" round front frame with upright brace



Tension Cable



Corner fitting for back net posts



Net attachment around entire frame



# PREMIERE GOAL



## **NOVA**<sup>TM</sup> Premiere Goal

### Goal Features:



Auxiliary Backstay



4" round front frame



Net attachment around entire frame

**(SGP-600)** European style all aluminum goal with the strength and durability to last. Top of the line goal that will compare and surpass the competition. Easy Track™ net attachment system is on the complete frame and bottom bases for easy installation of the net. European backstays plus our auxiliary backstays offer added stability and a unique look. NCAA, NFHS and FIFA compliant. Available as goal pair, or package.

**12 Year Limited Warranty** on Goal



# PREMIERE ADJUSTABLE GOAL

# NOVA<sup>TM</sup>

## Premiere Adjustable Goal



**(SGP-600AX)** European style all aluminum goal designed with the ability to adjust the rear crossbar to fit perfectly under any football goal post. Top of the line goal that will compare and surpass the competition. NCAA, NFHS and FIFA compliant. Available as goal pair or package.

**12 Year Limited Warranty** on Goal

### Goal Features:



Auxiliary Backstay



4" round front frame



Net attachment around  
entire frame



Adjustable Crossbar



# CLASSIC OFFICIAL GOALS



## Classic Official Goals

**(SGP-400 or SGP-760)** Smart choice for both competition and recreational play. Available in all aluminum front faces: 4" round or 4" x 2" square. Equipped with 2" galvanized steel backstays for that classic soccer look. NCAA, NFHS and FIFA compliant. Available as goal pair, or package.

**12 Year Limited Warranty** on Goal

### Goal Features:



Galvanized backstays



Net attachment around entire frame



# CLUB GOALS



## NOVA™ CLUB ROUND GOALS

White powder coat finish! NFHS and ASTM compliant.

- 3" extruded aluminum frames with European backstays
- Multiple sizes available
- 4" sq. mesh white nets (SCN-24), augers (SAS-95), and stainless steel hardware included
- Features Jaypro Sports flush mount Easy Track™ net attachment system with clips
- Wheel kit (NSGWK) sold separately

## Goal Features:



Net attachment around entire frame



Auger Anchors



Corner connection



European backstays

Size	Counter Weight	Item #
8'H x 24'W x 4'B x 9'D	150 LBS	RCG-24S
7'H x 21'W x 3'B x 8'D	170 LBS	RCG-21S
6½'H x 18½'W x 2'B x 6'D	240 LBS	RCG-18S
6½'H x 12'W x 2'B x 6'D	240 LBS	RCG-12S
4½'H x 9'W x 2'B x 5'D	N/A	RCG-9S
4'H x 6'W x 2'B x 5'D	N/A	RCG-6S

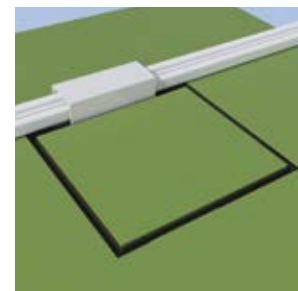
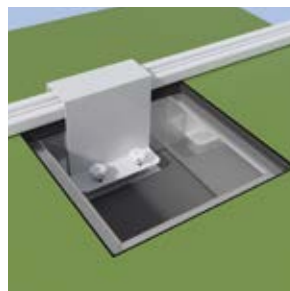


Features the Flush mounted  
**EASY TRACK™**  
Net Attachment System

## GROUND SOCCER ANCHOR

- Low profile inground anchor, constructed of aluminum
- Adjustable clamp fits over and secures most soccer rear crossbars
- Clamp support rods anchored directly into concrete foundation
- Removable clamp that stores inside box, when not in use
- Flush mounted cover, compatible with both synthetic infill turf or natural grass fields

SGA-AF





## CLASSIC CLUB ROUND GOALS

White powder coat finish! NFHS and ASTM compliant.

- 3" extruded aluminum frames with galvanized steel backstays
- Multiple sizes available (galvanized steel rear crossbars on three largest sizes)
- 4" sq. mesh white nets (SCN-24), augers (SAS-95), and stainless steel hardware included
- Features Jaypro Sports flush mount Easy Track™ net attachment system with clips on front frame
- Wheel kit (CSGWK) sold separately

Size	Counter Weight	Item #
8'H x 24'W x 4'B x 9'D	140 LBS	CC24S
7'H x 21'W x 3'B x 8'D	160 LBS	CC21S
6½'H x 18½'W x 2'B x 6'D	240 LBS	CC18S
6½'H x 12'W x 2'B x 6'D	240 LBS	CC12S
4½'H x 9'W x 2'B x 5'D	N/A	CC9S
4'H x 6'W x 2'B x 5'D	N/A	CC6S

## Goal Features:



Net attachment around entire frame



Auger Anchors



Corner connection



Classic backstays

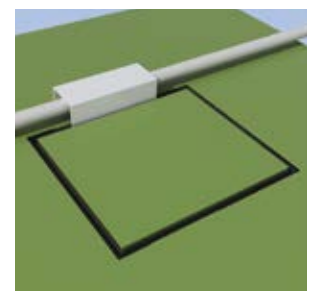
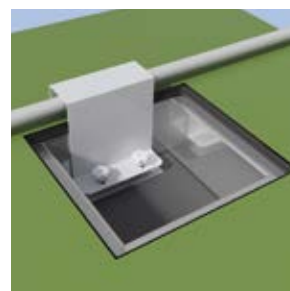


Features the Flush mounted  
**EASY TRACK™**  
Net Attachment System

## GROUND SOCCER ANCHOR

- Low profile inground anchor, constructed of aluminum
- Adjustable clamp fits over and secures most soccer rear crossbars
- Clamp support rods anchored directly into concrete foundation
- Removable clamp that stores inside box, when not in use
- Flush mounted cover, compatible with both synthetic infill turf or natural grass fields

SGA-AF





# COMBO GOALS



## DELUXE OFFICIAL SOCCER/FOOTBALL GOAL

Ideal for multi-purpose athletic facilities. NFHS compliant.

- Designed for permanent or semi-permanent installation
- 4" round extruded aluminum soccer uprights and crossbars, powder coated white
- 2" removable soccer backstays
- 2 $\frac{3}{8}$ " aluminum football uprights
- Football Uprights - 10' tall
- Features Jaypro Sports flush mount Easy Track™ net attachment system with clips on front frame
- Nets (SND-8 recommended), post padding, and ground sleeves sold separately
- Soccer Dimensions - 8' x 24' x 4' x 10'

**Goal w/Standard Backstays**

FBSC-240

**Goal w/European Backstays**

FBSC-240EB

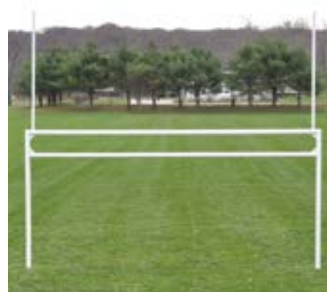
## ALUMINUM GROUND SLEEVES

Aluminum ground sleeves with locking caps for semi-permanent installation

**Set of 4**

SGP-445G

## Goal Features:



Football



Standard Backstay



Gusset



Net attachment around entire frame





FBSC-120 shown with net



Football Goal

## OFFICIAL SOCCER/FOOTBALL GOAL

- Meets high school regulations for competition football and soccer
- Designed for permanent or semi-permanent installation
- Football uprights can be installed at high school (23'4") or collegiate (18'6") widths and removed for soccer play
- 2" x 4" goal support uprights made of 14 gauge steel tubing
- 2" square steel tube football uprights are 10' tall
- "Money Clip" attachments included
- Ground sleeves (SGP-722G), nets (SEYL-24NHP) and backstays sold separately
- Ideal for shared football and soccer fields
- Soccer Dimensions - 8' x 24'

### Goal

FBSC-120

## GROUND SLEEVES

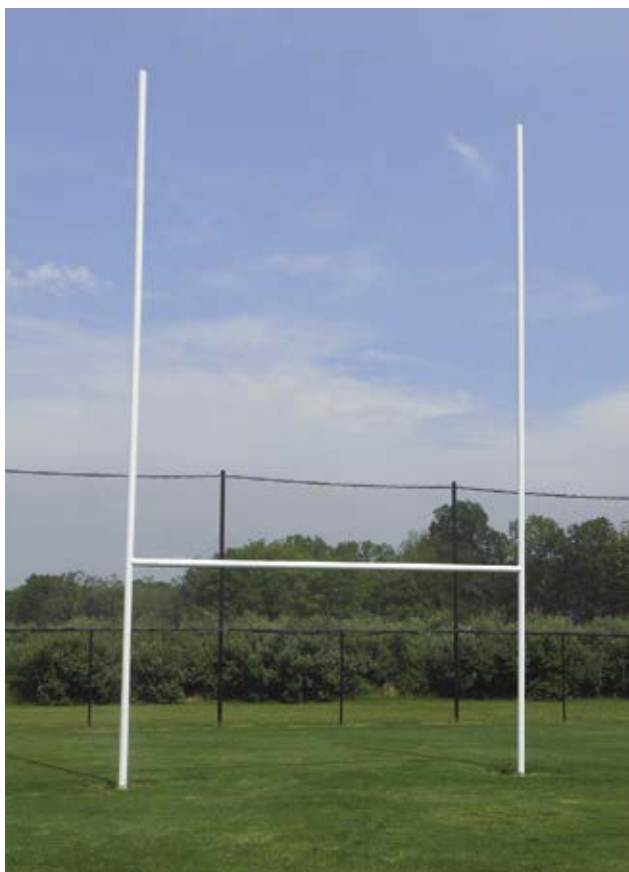
24" ground sleeves and four locking caps included.

### Set of 4

SGP-722G



# RUGBY & FIELD HOCKEY GOALS



## OFFICIAL RUGBY GOAL

- Designed for permanent installation
- 32'H x 18'4"W
- Uprights extend 22' above crossbar and made with 4" Sch 40 aluminum tubing
- Crossbar is 4" aluminum tubing
- Tough powder coated white finish

**Goal** RGP-3

## RUGBY GOAL PAD

Custom lettering and graphics available.

**Pad** RGP-SQP



## OFFICIAL FIELD HOCKEY GOALS

Aluminum and steel goals available with high-density bottom boards that never fade or break.

- All welded frames for maximum stability
- Net clips (SNT-180) included
- Wheel kit (FHG-1WKS) and net included
- 7'H x 12'W x 4'D

**Aluminum Goal**

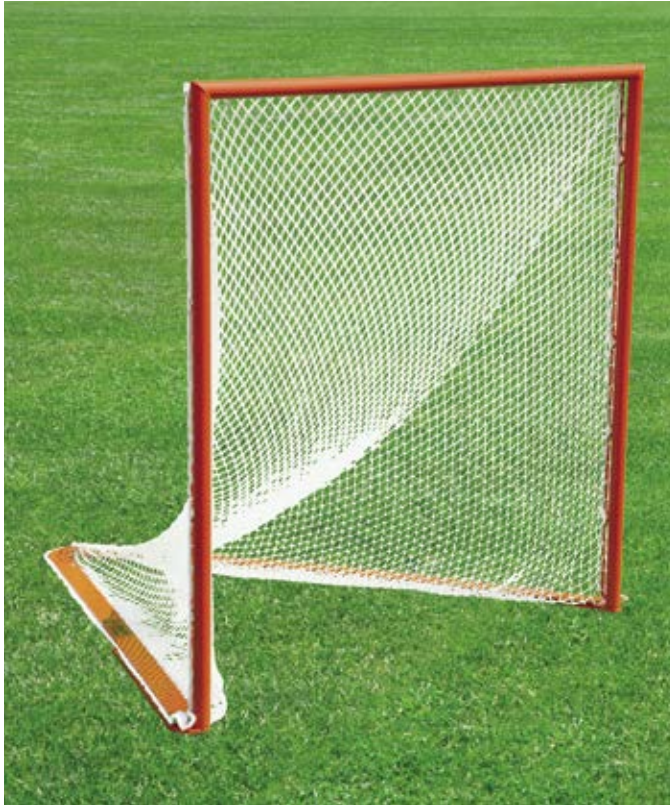
FHG-2ALS

**Steel Goal**

OFHG7124S



# LACROSSE GOALS



## PROFESSIONAL FIELD LACROSSE GOAL

Official size 3-piece goal with heavy weighted backstays are designed for professional or collegiate play.

- 2" heavy-walled steel frames with 4"W x 3/8"H base plates
- Net attaches to net rails and secured beneath cover plates
- Net (NETX1-G260 or NETX1-G160) included
- 6'H x 6'W x 7'D

*Call 800-243-0533 for custom graphics quote to display logos and sponsors on cover plates.*

**Goal & White Net**

LG-1XS

**Goal & Black Net**

LG-1XSBK



Display logos and sponsors on flat cover plate



## OFFICIAL FIELD LACROSSE GOAL

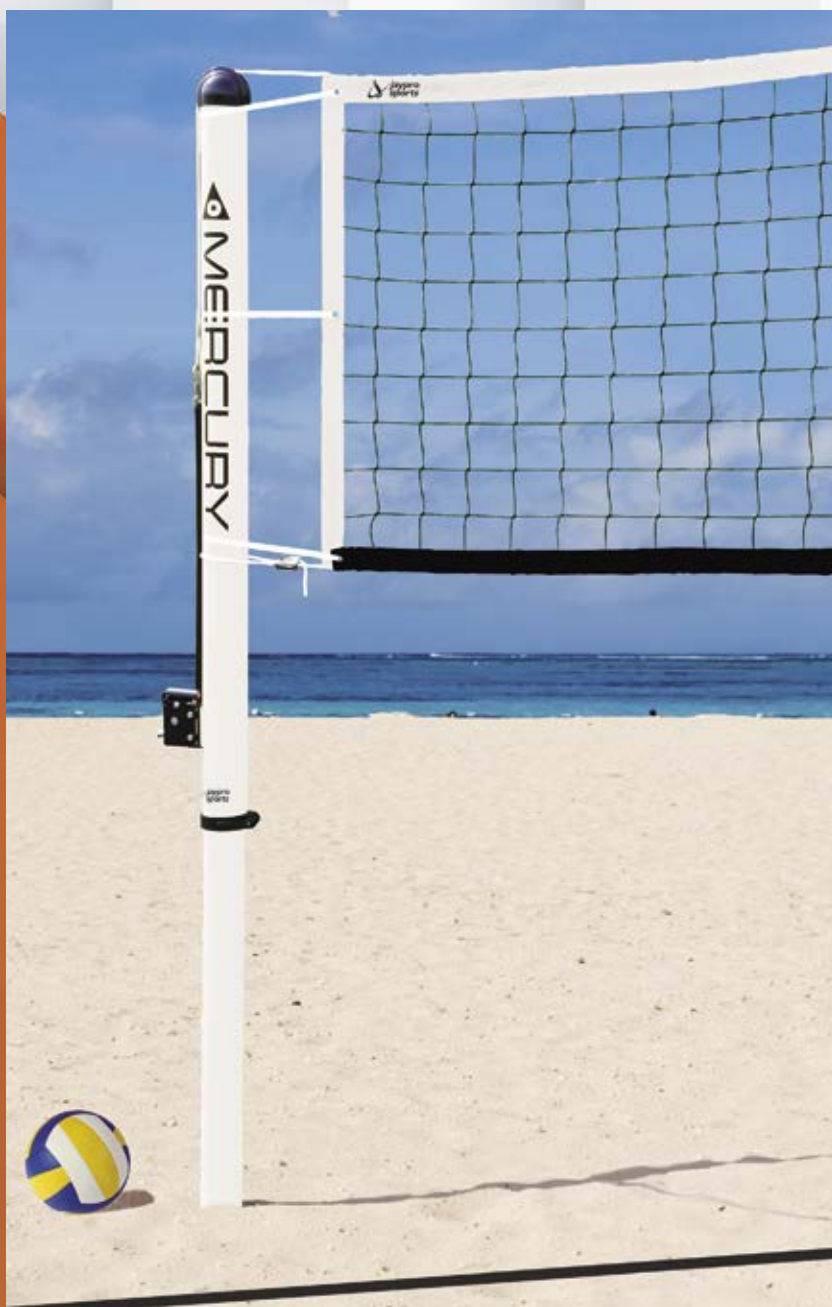
Official size 5-piece goal for men's/women's leagues.

- 2" rust-proof zinc coated steel frame
- Full net rail on entire goal face
- Net (LGN-50) included
- 6'H x 6'W x 7'D

LG-50B



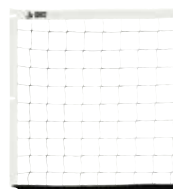
# BEACH VOLLEYBALL



## System Includes:



Uprights with Winch



Mercury™ Net



Upright Padding



Antenna



Optional Ground Insert with flag locator

## MERCURY™ BEACH VOLLEYBALL SYSTEM

Adjustable beach system with inverted telescoping design and carbon reinforced caps to prevent sand and water infiltration. Available in Professional (**OBV100-OFF**) or Competitive (**OBV100-REC**). NCAA, NFHS, USVBA and FIVB compliant.

Lightweight aluminum design with white powder coat finish. Adjustable height between 5'6" and 7'11½". 3½" bottom poles compatible with any 3½" ID sleeves (**OBV-100AK** recommended and sold separately). Mercury™ net (professional or competitive size), antenna, and upright padding included.

### VINYL PAD COLORS:



RED



NAVY BLUE



FOREST GREEN



BLACK



ROYAL BLUE



GRAY



MAROON



PURPLE



KELLY GREEN



YELLOW



PINK



TAN



ORANGE



LIGHT BLUE



## COASTAL COMPETITION VOLLEYBALL SYSTEM

Heavy-duty system designed to withstand coastal winds and weather. Adjustable winch for play at any height!

- 4" square heavy-walled aluminum uprights with additional inside lateral support
- Ground sleeves, installation tool, winch, and weather resistant net included

<b>System</b>	OCC-500
<b>Replacement Net</b>	OCC-500N



Inside lateral support



OCC-500N



## OUTDOOR COMPETITION VOLLEYBALL UPRIGHTS

Durable system designed for outdoor competition. Fixed net heights for men's and women's play!

- 3½" galvanized steel uprights with silver powder coat finish
- Quickly attach net with snap buckles
- Available in system and center system models
- 36" ground sleeves, cover caps, and rust-resistant ratchet included
- Net (PVBN-3) recommended and sold separately

<b>System</b>	OCV-900
<b>Center System</b>	OCV-900C



## RECREATIONAL OUTDOOR VOLLEYBALL UPRIGHTS

Ideal for volleyball, badminton, or tennis.

- 2¾" galvanized steel uprights
- PVC ground sleeves, top caps, and rust-resistant ratchet winch included
- Net (VBD-3) recommended and sold separately

*Ground sleeves are designed to be set even with playing surface. Contact Jaypro Sports for special installation requirements.*

<b>Uprights</b>	OS-350
-----------------	--------



# TENNIS & PICKLEBALL



RTP-300 RTP-300BK STP-200 STP-200BK



RTP-278

RTP-278BK



PPR10GR

PPR10BK

## Tennis: Outdoor

Item #	Post Size	Winch	Color	Net Rail
RTP-278	2-7/8" OD	External	Green	No
RTP-278BK	2-7/8" OD	External	Black	No
TP278BK	2-7/8" OD	Internal	Black	Yes
TP278GR	2-7/8" OD	Internal	Green	Yes
RTP-300	3" OD	Internal	Green	Yes
RTP-300BK	3" OD	Internal	Black	Yes
STP-200	3" SQ	Internal	Green	Yes
STP-200BK	3" SQ	Internal	Black	Yes
TP-125	3-1/2" OD	External	Green	No
TPGS-35	3-1/2" OD	External	Galvanized	No

## Tennis: Indoor

Item #	Post Size	Winch	Color	Net Rail
ITS-300	3" OD	Internal	Green	Yes

For more information, scan below or go to:  
[www.jaypro.com/Tennis](http://www.jaypro.com/Tennis)



## Pickleball: Outdoor

Item #	Post Size	Winch	Color	Net Rail
PPR10GR	2-7/8" OD	External	Green	No
PPR10BK	2-7/8" OD	External	Black	No
PKB278-GR	2-7/8" OD	Internal	Green	Yes
PKB278-BK	2-7/8" OD	Internal	Black	Yes
PKB300-GR	3" OD	Internal	Green	Yes
PKB300-BK	3" OD	Internal	Black	Yes

## Pickleball: Indoor

Item #	Post Size	Winch	Color	Net Rail
PPR15GR	2-7/8" OD	External	Green	No
PPR15BK	2-7/8" OD	External	Black	No
PKB3IN-GR	3" OD	Internal	Green	Yes
PKB3IN-BK	3" OD	Internal	Black	Yes

For more information, scan below or go to:  
[www.jaypro.com/Pickleball](http://www.jaypro.com/Pickleball)



# NETS AND ACCESSORIES



## TOURNAMENT TENNIS NET

- 3mm braided black polyethylene net
- Top 7 rows double meshed
- 51 oz. double layered multi-stitched heavy-duty vinyl headband
- 18 oz. side pockets with 1/2" fiberglass dowel
- Tapered net bottom and includes center strap
- 41'-7"L x 42"H

TTN-3



## COLLEGIATE TENNIS NET

- 3mm twisted black polyethylene net
- 51 oz. multi-stitched heavy-duty vinyl headband
- Synthetic taped sides, tapered net bottom and includes center strap
- 6mm vinyl coated steel cable
- 42'L x 42"H

TPL-5



## COUNTRY CLUB TENNIS NET

- 3.5mm braided black polyethylene net
- Top 7 rows double meshed
- 51 oz. double layered reinforced vinyl headband
- 18 oz. side pockets with 1/2" fiberglass dowel
- Tapered net bottom and includes center strap
- 41'-7"L x 42"H

CCPTN42



## ECONOMY TENNIS NET

- Lightweight and weather-resistant
- 2mm knotless nylon net with 1 1/2" sq. mesh
- 2" vinyl headband with 1/4" dia. nylon cord cable
- Taped side and bottom edges
- 42'L x 42"H

TDP-42



## PICKLEBALL NET

- 2.5mm twisted polyethylene, 1 3/4" square black mesh
- Double mesh over top 5 rows
- Top headband is 2 1/2" white woven polyester, 2 1/2" PVC side fabric and 1/2" fiberglass dowel rods
- Top cord: 4mm vinyl coated steel cable
- Indoor/outdoor use
- 21'L x 32"H

PT-21N

## CENTER ANCHOR

Aluminum anchor with stainless steel drive pin for easy snap assembly.

A-2





# FIELD CAGES



**6 Pole Layout - DCHS-35BN**



**4 Pole Layout - SC-25BN**



## DISCUS CAGE

Durable semi-permanent discus cage with pulley system to set-up/remove net. Ideal for high schools. NFHS compliant. The barrier net wraps around the outside of the poles holding the discus cage in one complete curtain with no breaks. (6) 4" heavy-walled aluminum poles (14'6" tall with 24" offset) with individual swivel pulley hoist system per pole. Black powder coat or mill finish available. Top made of heavy-duty weather treated 1 $\frac{7}{8}$ " #42 nylon mesh black net attached to  $\frac{1}{4}$ " vinyl coated cable for support. Net breaking strength of over 320 lbs. Ground sleeves (DCHS-6S) and barrier net (DCHS-BN) sold separately.

### Discus Cage w/Net - No Sleeves

Replacement Cage Net - 55'L x 14'H

Replacement Ground Sleeves - Set of 6

### (DCHS-35) + Barrier Net - No Sleeves

Replacement Barrier Net - 63'L x 7'H

DCHS-35

DCHS-35NET

DCHS-6S

DCHS-35BN

DCHS-BN

## SHOT CAGE

Barrier net adds an additional layer of protection for athletes, fans, officials and coaches. Accommodates throwing sector at 34.92 degrees. (4) 4" O.D. curved aluminum poles with 2' offset includes individual swivel pulley hoist system per pole. Black powder coat or mill finish. Heavy-duty weather treated 1 $\frac{7}{8}$ " #42 nylon mesh black net. Net breaking strength of over 320 lbs. Ground sleeves (SC-25S) sold separately.

### Cage

Ground Sleeves (Set of 4)

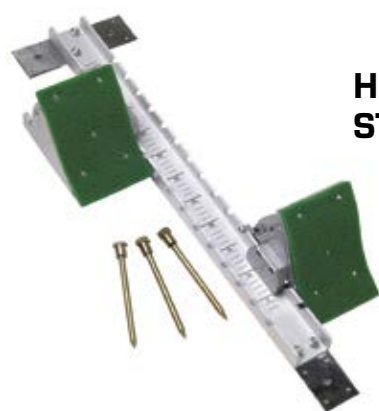
### (SC-25) + Barrier Net - No Sleeves

SC-25

SC-25S

SC-25BN

# TRACK EQUIPMENT



**HIGH SCHOOL  
STARTING BLOCK**

Lightweight aluminum construction starting system has 5" wide, 4 position adjustable pedals and a 3" center rail. All-weather spikes included.

TFSB-HS



**COLLEGIATE  
STARTING BLOCK**

Highest quality lightweight all aluminum casting starting system with 5 pedal angle adjustments. Pedals will not come off rail during transport. Includes a center rail for carrying, threaded spikes for synthetic surface and threaded spike inserts.

TFSB-C

## ELITE HIGH SCHOOL HURDLES



TFH-HS



TFRH-HS

Stackable, aluminum design with spring loaded buttons for easy height adjustment of 30", 33", 36", 39" & 42". Welded base construction for superior strength. NFHS compatible.

**Elite Hurdle**

TFH-HS

**Rocker Hurdle**

TFRH-HS



**COLLEGIATE  
HURDLE**

Extruded aluminum base with beveled edges make for a sleek and stable easy stack design. Spring-loaded riser adjusts from 30", 33" 36", 39" & 42" and spring-loaded weights easily adjust to correct pullover weight for all heights.

TFH-C



## HURDLE CART

Heavy-duty 6-wheel steel cart carries 8-14 hurdles. Unique design helps transport hurdles over curbs and through rough grass or loose gravel. Cart accommodates both high school and collegiate hurdles.

TFH-CART



# POLE VAULT

## POLE VAULT LANDING SYSTEMS

Uniquely fabricated landing systems with varying densities. Reinforced vinyl coating (22 oz. for high school styles (NFHS complaint) and 18 oz. for collegiate styles (NCAA, NFHS and IAAF complaint) with spike resistant top pad. *Specify vinyl color.*

### HIGH SCHOOL SYSTEM

TFP-LSHS



Color options available



### COLLEGIATE SYSTEM

TFP-LSC



### HIGH SCHOOL

20' x 21' x 26"

TFP-LSHS

Cover

TFP-LSCHS

Package

TFPVPKG1

Package includes: landing system, top pad, weather cover, standard pads, pole vault standards and crossbar.

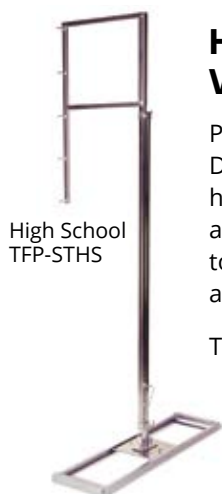
### COLLEGIATE

22' x 24' x 32"

TFP-LSC

Cover

TFP-LSCC



High School  
TFP-STHS

### HIGH SCHOOL POLE VAULT STANDARD

Pole standard adjusts from 6' to 18'. Durable rust-resistant steel risers have easy grip handles for height adjustment and "spin t-handles" to lock riser in place. Base with 32" adjustability.

TFP-STHS



TFP-XB

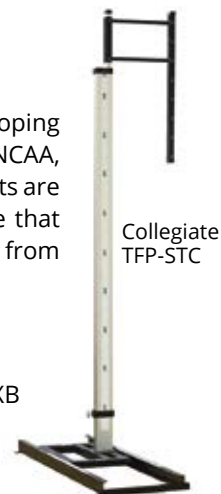
### COLLEGIATE POLE VAULT STANDARD

Aluminum uprights with telescoping riser adjusts from 9' to 21'. NCAA, NFHS and IAAF complaint. Uprights are mounted on offset steel carriage that rides on pulley wheels (adjusts from 0-32").

TFP-STC

14' 10" Crossbar

TFP-XB



Collegiate  
TFP-STC

# HIGH JUMP

## HIGH JUMP LANDING SYSTEMS

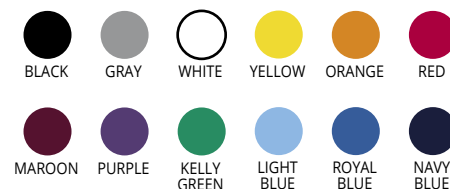
Three base sections buckle at ends with seams covered by 3" hook-and-loop strips. 2" top pads cover sections. NFHS compliant for High School and NCAA, NFHS and IAAF compliant for Collegiate. *Specify vinyl color when ordering.*

### HIGH SCHOOL SYSTEM

TFHJ-SYHS



#### VINYL COLORS:



### COLLEGIATE SYSTEM

TFHJ-SYC



### HIGH SCHOOL

#### Straight Front Design

**16'6"W x 8'D x 26"H** TFHJ-SYHS

**Cover** TFHJ-SYCHS

**Package** TFHJPKG1

*Package includes: landing system, top pad, weather cover, standard pads, high jump standards and crossbar.*

#### Front Cut-Out Design

**16'6"W x 8'D x 26"H** TFHJ-SYHSCO

**Cover** TFHJ-SYHSCV

**Package** TFHJPKG2

*Package includes: landing system, top pad, weather cover, standard pads, high jump standards and crossbar.*

### COLLEGIATE

**18"W x 10'D x 28"H** TFHJ-SYC

**Cover** TFHJ-SYCC

**Package** TFHJPKG3

*Package includes: landing system, top pad, weather cover, standard pads, high jump standards and crossbar.*

### HIGH SCHOOL HIGH JUMP STANDARD

Zinc plated water-resistant standards adjust from 2' to 8' in ¼" intervals. 16" base with roll away feature. Metric scale in cm. 62 to 244.

TFHJ-STHS

High School  
TFHJ-STHS



TFHJ-XB

**13' 1 1/2" Crossbar**  
TFHJ-XB

### COLLEGIATE HIGH JUMP STANDARD

Aluminum uprights with telescoping riser adjusts from 1½' to 9'. Steel roll away base with adjusting leveling screws. Measurements in standard and metric.

TFHJ-STC

Collegiate  
TFHJ-STC





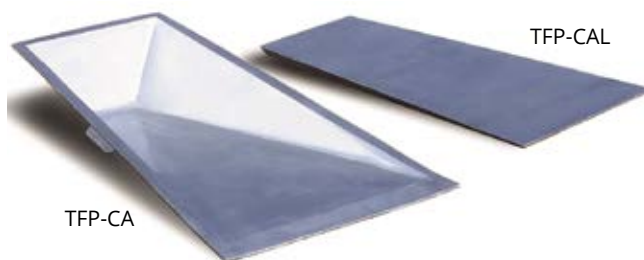
# TRACK EQUIPMENT



## STAINLESS STEEL POLE VAULT BOXES

Pole vault boxes available in heavy gauge steel with white paint finish or smooth finished 12 gauge stainless steel. Optional steel lid available.

<b>Stainless Box</b>	TFP-SS
<b>Stainless Lid</b>	TFP-SL



## CAST ALUMINUM POLE VAULT BOX

Thick walled aluminum casting with rounded inside corners for easy rotation of pole in box. NCAA, NFHS and IAAF compliant. Optional lid has textured finish and may be covered with synthetic surface to match runway.

<b>Aluminum Box</b>	TFP-CA
<b>Aluminum Lid</b>	TFP-CAL



## OFFICIAL CIRCLES

Shot and discus circles made of 1" x 3/4" x 1/4" aluminum. Four sections with anchoring holes.

<b>Shot</b>	TFSR
<b>Discus</b>	TFDR



## WEBBED CIRCLES / RINGS

Discus and shot/hammer rings with welded cross braces for added rigidity. Bolted together before installation to ensure circle stays round.

<b>Shot/Hammer</b>	TFTC-SHC
<b>Discus</b>	TFTC-DC



## CAST ALUMINUM TOEBOARD PADS

Depressed pads and level pads are cast aluminum construction and meet all rule specifications.

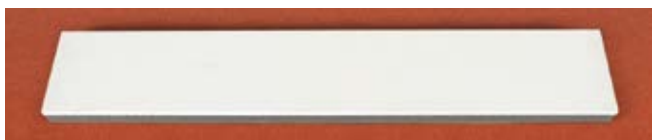
<b>Depressed Pad</b>	TFTB-ADP
<b>Level Pad</b>	TFTB-ALP



## POLY TOEBOARD DEPRESSED PAD

Designed with Linear Low-Density Polyethylene (LLDPE) and UV stabilizer for maximum durability.

TFTB-PLY



### 8" LONG JUMP TAKE-OFF BOARD

Official 48" x 8" take-off board.  $\frac{3}{4}$ " polyurethane top surface on 1 $\frac{1}{2}$ " x 8" plastic under board.

TFLJ-B



### 20" LONG/TRIPLE JUMP TAKE-OFF BOARD

Two part poly board with soft texture  $\frac{3}{4}$ " top board attached to a high density  $\frac{3}{4}$ " poly under board.

TFLJ-P20



### 8" LONG/TRIPLE JUMP TAKE-OFF BOARD TRAY

8" zinc plated steel tray system. Board mounted to steel framework with 6 adjusting bolts.

TFLJ-P8

### 12" LONG/TRIPLE JUMP TAKE-OFF BOARD SYSTEM

12" tray system with take-off board,  $\frac{1}{2}$ " plywood foul board, and heavy-duty steel lid. Foul board can be replaced with plasticine for meets.

TFLJ-W12L



### 20" LONG/TRIPLE JUMP TAKE-OFF BOARD TRAY

20" stainless steel tray system with drain holes for permanent installation in synthetic runways.

TFLJ-TR

## SAND PIT FORMS & COVERS

Structure is made of specially folded  $\frac{1}{8}$ " aluminum with built in ledge to receive sand pit cover. NCAA, NFHS and IAAF compliant. The sand catcher system with included covers, allows sand to be conveniently stored when the pit is covered. Minimum distance from takeoff board to back of pit is 10 meters. Available in 3 sizes.

Sand Pit Form	23'	TFSP-23
	26'	TFSP-26
	29'	TFSP-29
Sand Pit Cover	23'	TFSPC-23
	26'	TFSPC-26
	29'	TFSPC-29





# SEATING

## PLAYER BENCHES

Sturdy rust-resistant aluminum bench for athletic fields, public parks, and sports complexes.



For more information, scan or go to:  
[www.jaypro.com/Bleachers](http://www.jaypro.com/Bleachers)

## PLAYER BENCHES WITH SHELF

Durable rust-resistant aluminum bench with equipment shelf for athletic fields, and sports complexes.



### POWDER COAT COLORS:



RED



NAVY  
BLUE



YELLOW



GOLD



GRAY



BLACK



MAROON



DARK  
GREEN



KELLY  
GREEN



ROYAL  
BLUE



WHITE



ORANGE



PURPLE

## SCORERS TABLE WITH BENCH

Heavy-duty and rust-resistant. Ideal for any outdoor sport.



## COURTSIDE BENCHES WITH SEAT BACK

Portable 5' aluminum benches for courtside viewing.



## COURTSIDE BENCHES WITH DOUBLE SEAT

Portable 5' aluminum benches for courtside viewing.





# SEATING

These lightweight and stable aluminum bleachers are available in either single (standard) or double (preferred) foot plank models.



Single Foot Plank



Double Foot Plank

## TIP & ROLL BLEACHER

Lightweight and stable aluminum bleachers tip-and-roll for easy mobility and storage.



## ALL ALUMINUM BLEACHER

Lightweight all aluminum bleachers are perfect for outdoor parks and fields.



## BACK-TO-BACK BLEACHER

Place between adjoining fields or indoor courts for spectator viewing from both sides of the bleacher.



### POWDER COAT COLORS:



RED



NAVY  
BLUE



YELLOW



GOLD



GRAY



BLACK



MAROON



DARK  
GREEN



KELLY  
GREEN



ROYAL  
BLUE



WHITE



ORANGE



PURPLE

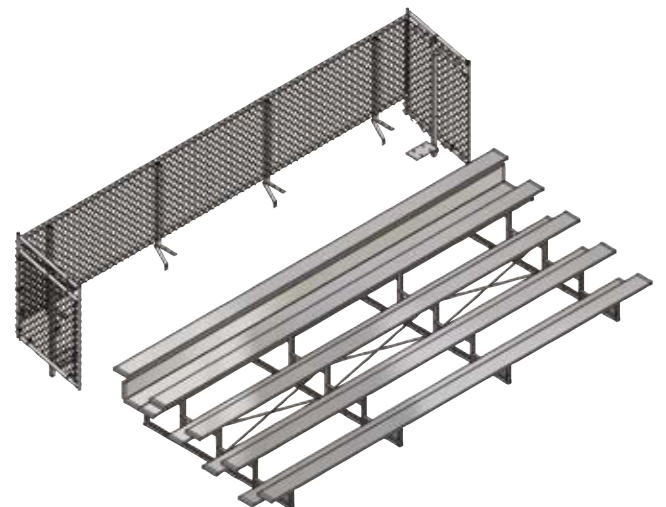
## STANDARD OUTDOOR BLEACHER

Heavy-duty outdoor bleacher with dual braces and rear stabilizing bar for increased strength.



## ENCLOSED BLEACHER

Heavy-duty vertical guardrail or chain-link enclosed bleacher with dual braces and rear stabilizing bar for increased strength.



Universal Bleacher Enclosure





**NEW CONSTRUCTION**

**FACILITY UPGRADE**

**ENGINEERING**

**CUSTOM BUILD**

**IN-HOUSE DESIGN**

**INSTALLATION**

**ARCHITECT READY**

JAYPRO SPORTS  
976 HARTFORD TURNPIKE  
WATERFORD, CT 06385

T: 800-243-0533 • F: 800-988-3363  
ORDERS@JAYPRO.COM • WWW.JAYPRO.COM